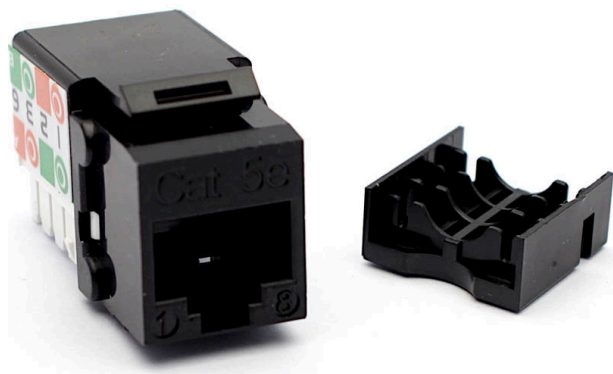


Excel Cat5e UTP Unscreened Keystone Jack IDC Punch Down Black

Item Code: 100-010-BK

excel
without compromise.



✕ IDC point at 90 degrees to jack

✕ Suitable for patch panel and faceplate mounting

✕ 3P Verified

✕ UL94V-0 fire retardant plastic

✕ Supports Gigabit Ethernet

✕ ISO, EN & TIA compliant

Product Overview

100-010-BK Excel Cat5e UTP Unscreened Keystone Jack IDC Punch down Black, available as part of our range of excel Cat5e keystone jacks for RJ45 network connections. Suitable for mounting in a range of housings from patch panels, faceplates and shutters, to floor boxes and work area distribution enclosures. The socket itself is housed in a high quality ABS plastic housing which opens at the rear to reveal the IDC termination points.

Product Specifications

Feature	Values
Model	Jack
Type of connector	RJ45 8(8)
Shielded	no
Category	5E
Connection type	110
Requires termination tool	yes
Suitable for round cable	yes
Suitable for flat cable	no
Suitable for solid core	yes
Colour	Black
AWG-range	22...26

Excel Cat5e UTP Unscreened Keystone Jack IDC Punch Down Black

Item Code: 100-010-BK



Additional specifications

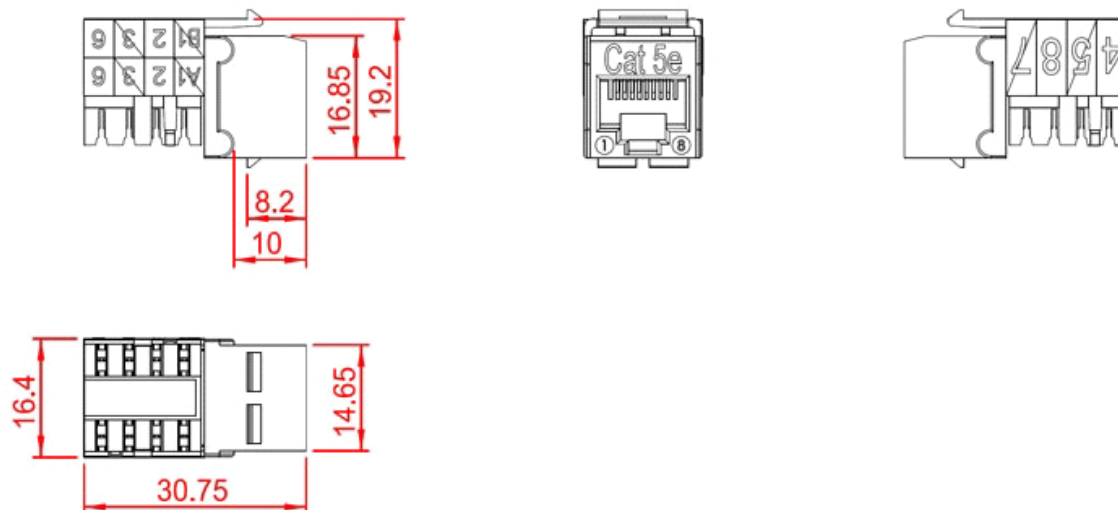
Features	Values
Width	16.4mm
Depth	30.75mm
Height	19.2mm
Housing	ABS High-Impact
RJ45 Contacts	Nickel plated phosphor bronze alloy with 50 micro-inch Gold plating
IDC Contacts	Tin plated phosphor bronze alloy
RJ45 Life	Minimum 750 insertions
Contact force	100 grams with FCC compliant RJ-45 plug
Plug retention	48.9 N
Suitable impact tool	110 style punch down tool
Insulation resistance	500 M Ω
Dielectric withstanding voltage	1000 V AC
DC current rating	1.5 Amps
DC resistance	0.1 Ω
Contact resistance	20 m Ω
Storage temperature	-40 to +70°C
Operating temperature	-10 to +60°C
Relative humidity (Operational)	10% to 90% RH

Excel Cat5e UTP Unscreened Keystone Jack IDC Punch Down Black

Item Code: 100-010-BK

excel
without compromise.

Product drawing



Included accessories

Accessories	Quantity
Nylon cable tie	1
Wiring cap	1

Standards

Applicable standard	Detail
RoHS	Compliant to the Restriction of Hazardous Substances
ISO/IEC 11801-1:2017	Information technology - Generic cabling for customer premises: Part 1 General Requirements
EN 50173-1:2018	Information technology. Generic cabling systems - General requirements
ANSI/TIA 568-2.D	Balanced Twisted-Pair Telecommunications Cabling and Components Standards
UL-94-V-0	Burning stops within 10 seconds after two applications of ten seconds each of a flame to a test bar. NO flaming drips are allowed.
WFD	Compliant to Waste Framework Directive
SCIP	Compliant - Does Not Contain Substances of Concern in Products

Excel Cat5e UTP Unscreened Keystone Jack IDC Punch Down Black

Item Code: 100-010-BK



Part Number Table

Part Number	Description
100-010	Excel Cat5e UTP Unscreened Keystone Jack IDC Punch Down White
100-010-24	Excel Cat5e UTP Unscreened Keystone Jack IDC Punch Down White (Box 24)
100-010-BK	Excel Cat5e UTP Unscreened Keystone Jack IDC Punch Down Black
100-010-BK-24	Excel Cat5e UTP Unscreened Keystone Jack IDC Punch Down Black (Box 24)

Excel is a world class premium performing end to end infrastructure solution designed, Manufactured, supported and delivered without compromise.

Contact us at sales@excel-networking.com



E&OE. Excel is a registered trade name of Mayflex Holdings Ltd.