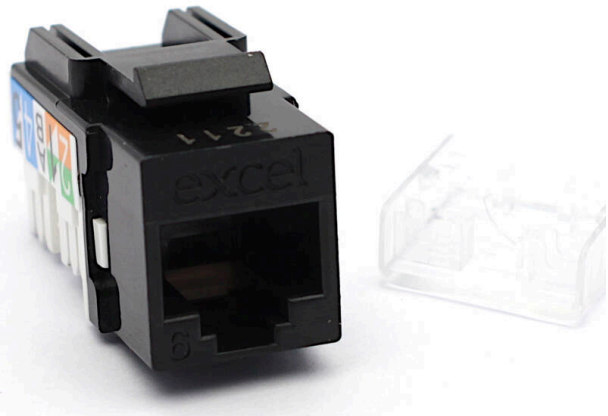


Excel Cat6 UTP Unscreened Keystone Jack IDC Punch Down Black

Item Code: 100-011-BK



- ✕ IDC point at 90 degrees to jack
- ✕ Suitable for patch panel and faceplate mounting
- ✕ 3P Verified
- ✕ UL94V-0 fire retardant plastic
- ✕ Supports Gigabit Ethernet
- ✕ ISO, EN & TIA compliant

Product Overview

Excel Cat6 UTP Unscreened Keystone Jack IDC Punch down Black, available as part of our range of excel Cat6 keystone jacks for RJ45 network connections. Suitable for mounting in a range of housings from patch panels, faceplates and shutters, to floor boxes and work area distribution enclosures.

The socket itself is housed in a high quality ABS plastic housing which opens at the rear to reveal the IDC termination points.

Product Specifications

| Feature | Values |
|---------------------------|-----------|
| Model | Jack |
| Type of connector | RJ45 8(8) |
| Shielded | no |
| Category | 6 |
| Connection type | 110 |
| Requires termination tool | yes |
| Suitable for round cable | yes |
| Suitable for flat cable | no |
| Suitable for solid cores | yes |
| Colour | Black |

Excel Cat6 UTP Unscreened Keystone Jack IDC
Punch Down Black

Item Code: 100-011-BK



Additional specifications

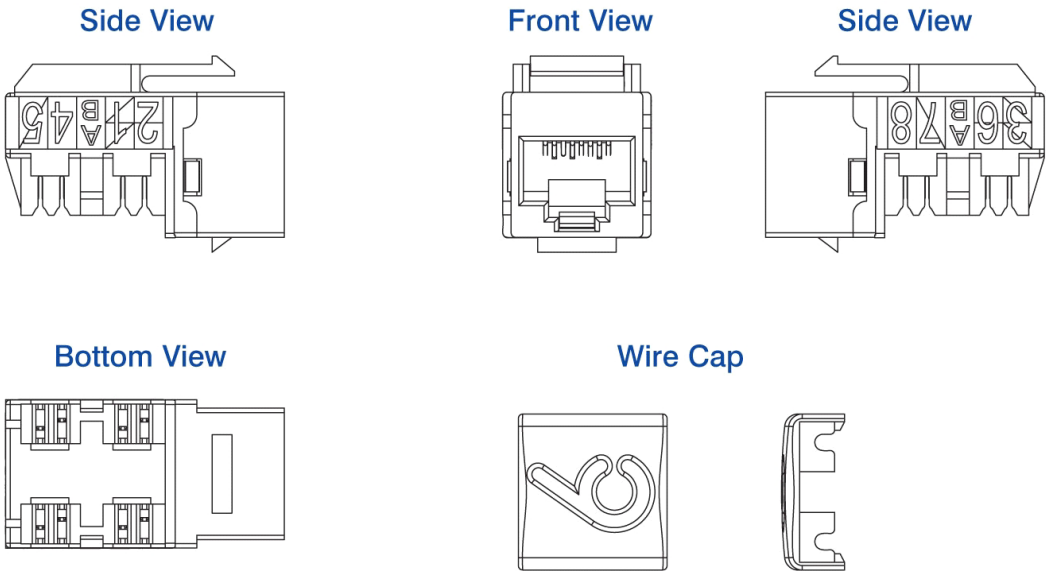
| Features | Values |
|---------------------------------|---|
| Width | 16.5 mm |
| Depth | 30.9 mm |
| Height | 19.2 mm |
| Housing | ABS High-Impact |
| RJ45 Contacts | Nickel plated phosphor bronze alloy with 50 micro-inch Gold plating |
| IDC Contacts | Tin plated phosphor bronze alloy |
| RJ45 Life | Minimum 750 insertions |
| Contact force | 100 grams with FCC compliant RJ-45 plug |
| Plug retention | 48.9 N |
| Suitable impact tool | 110 style punch down tool |
| Storage temprature | -40 to +70°C |
| Operating temprature | -10 to +60°C |
| Relative humidity (Operational) | 10% to 90% RH |

Excel Cat6 UTP Unscreened Keystone Jack IDC
Punch Down Black

Item Code: 100-011-BK



Product drawing



Included accessories

| Accessories | Quantity |
|-----------------|----------|
| Nylon cable tie | 1 |
| Wiring cap | 1 |

Standards

| Applicable standard | Detail |
|---|---|
| RoHS-II/III (2011/65/EU & 2015/863): 2023 | Our products, demonstrate full adherence to the regulatory stipulations of the EU Directive 2011/65/EU (RoHS-II) and its corresponding delegated directive 2015/863 (RoHS-III). |
| ISO/IEC 11801-1:2017 | Information technology - Generic cabling for customer premises: Part 1 General Requirements |
| EN 50173-1:2018 | Information technology. Generic cabling systems - General requirements |
| ANSI/TIA 568-2.D | Balanced Twisted-Pair Telecommunications Cabling and Components Standards |
| UL-94-V-0 | Burning stops within 10 seconds after two applications of ten seconds each of a flame to a test bar. NO flaming |

Excel Cat6 UTP Unscreened Keystone Jack IDC Punch Down Black

Item Code: 100-011-BK



drips are allowed.

WFD: 2023

Compliant to Waste Framework Directive

SCIP: 2023

Compliant - Does Not Contain Substances of Concern In articles as such or in complex objects (Products)

POPs (EU) No 2019/1021

EU Regulation for the restriction of Persistent Organic Pollutants.

Part Number Table

| Part Number | Description |
|---------------|---|
| 100-011 | Excel Cat6 UTP Unscreened Keystone Jack IDC Punch Down White |
| 100-011-24 | Excel Cat6 UTP Unscreened Keystone Jack IDC Punch Down White (Box 24) |
| 100-011-BK | Excel Cat6 UTP Unscreened Keystone Jack IDC Punch Down Black |
| 100-011-BK-24 | Excel Cat6 UTP Unscreened Keystone Jack IDC Punch Down Black (Box 24) |
| 100-011-BU | Excel Cat6 UTP Unscreened Keystone Jack IDC Punch Down Blue |
| 100-011-GN | Excel Cat6 UTP Unscreened Keystone Jack IDC Punch Down Green |
| 100-011-RD | Excel Cat6 UTP Unscreened Keystone Jack IDC Punch Down Red |

Excel is a world class premium performing end to end infrastructure solution designed, Manufactured, supported and delivered without compromise.

Contact us at sales@excel-networking.com



E&OE. Excel is a registered trade name of Mayflex Holdings Ltd.