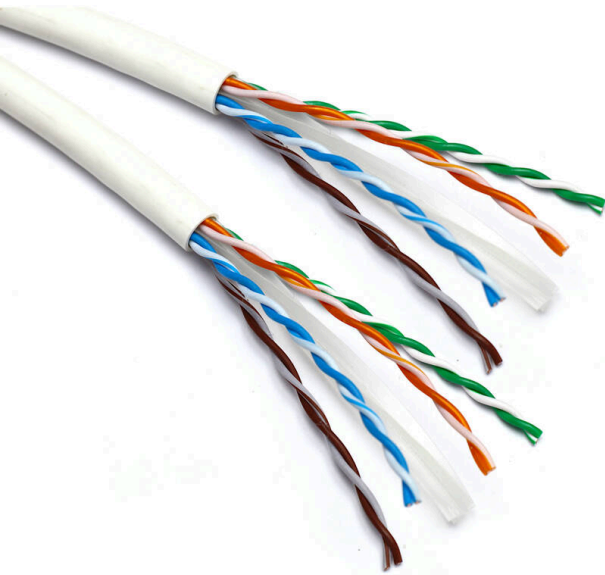


Excel Solid Cat6 Dual Cable U/UTP LSOH CPR
Euroclass Dca 500 m Reel White

Item Code: 100-103



✕ Dual Cat6 Copper Cable

✕ U/UTP No Overall Screening

✕ No Conductor Screening

✕ Outer sheath colour White

✕ Reaction-to-fire class according to EN 13501-6: Dca

✕ Smoke development class according to EN 13501-6: s2

✕ CIBSE TM65 Embodied Carbon: 160.542 kg CO2e

Product Overview

Excel solid Dual Cat6 ethernet cable U/UTP LSOH CPR Euroclass Dca manufactured and tested to the TIA/EIA 568-B.2-1, EN50173-1 and ISO/ IEC 11801 Cat 6 specifications, 500m Reel. Each cable consists of 8 colour coded solid copper conductors twisted together to form four pairs.

These are then formed around a central X-shaped polyethylene centre with the whole cable produced in a LSOH sheath.

Product Specifications

Feature	Values
Conductor surface	Bare
AWG size	24
Conductor category	Class 1 = solid
Total number of cores	16
Stranding element	Pairs
Specification core insulation	Polyethylene (PE)
Core identification	Colour

Excel Solid Cat6 Dual Cable U/UTP LSOH CPR Euroclass Dca 500 m Reel White

Item Code: 100-103



Overall screening	None
Conductor screening	None
Outer sheath material	Copolymer, thermoplastic (LSOH)
Outer sheath colour	White
Flame retardant according to IEC 60332-1-2	yes
Reaction-to-fire class according to EN 13501-6	Dca
Smoke development class according to EN 13501-6	s2
Euro class flaming droplets/particles according to EN 13501-6	d2
Euro class acidity according to EN 13501-6	a1
Outer diameter approx.	12.02 mm
Installation Temperature Range	0...60 °C
Operating Temperature Range	-20...75 °C
Category	6
NVP value	69 %

Cable specifications

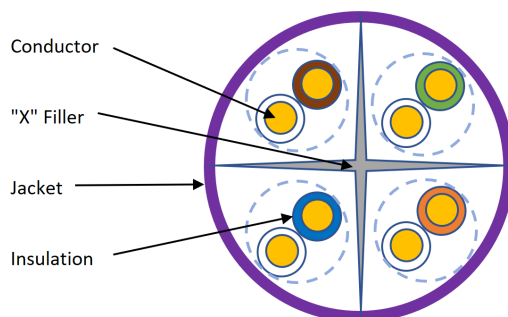
Features	Values
Dielectric strength	2.5 kV for 2 s
Maximum pulling load	100 N
MBR during installation	8x cable OD
MBR installed	4x cable OD

Excel Solid Cat6 Dual Cable U/UTP LSOH CPR Euroclass Dca 500 m Reel White

Item Code: 100-103



Cross-section diagram



Standards

Applicable standard	Subject
ISO/IEC 11801-1:2017	Information technology - Generic cabling for customer premises: Part 1 General Requirements
IEC 61156-5:2020	Multicore and symmetrical pair/quad cables for digital communications - Part 5: Symmetrical pair/quad cables with transmission characteristics up to 1 000 MHz - Horizontal floor wiring - Sectional specification
EN 50173-1:2018	Information technology. Generic cabling systems - General requirements
EN 50173-2:2018	Information technology. Generic cabling systems - Office premises
BS EN 50288-3-1:2013	Multi-element metallic cables used in analogue and digital communication and control. Sectional specification for unscreened cables characterised up to 250 MHz
EN 50399:2011+A1:2016	Common test methods for cables under fire conditions. Heat release and smoke production measurement on cables during flame spread test. Test apparatus, procedures, results
IEC 60332-1-2:2004 + A12:2020	Tests on electric and optical fibre cables under fire conditions. Test for vertical flame propagation for a single insulated wire or cable. Procedure for 1 kW pre-mixed flame
ANSI/TIA 568-D:2015	Balanced Twisted-Pair Telecommunications Cabling and Components Standards
IEC 60754-2:2014	Test on gases evolved during combustion of materials from cables - Part 2: Determination of acidity (by pH

Excel Solid Cat6 Dual Cable U/UTP LSOH CPR Euroclass Dca 500 m Reel White

Item Code: 100-103



measurement) and conductivity

IEC 61034-2:2005+A2:2020

Measurement of smoke density of cables burning under defined conditions – Part 2: Test procedure and requirements

EN 50575:2014 + A1:2016

Power, control and communication cables — Cables for general applications in construction works subject to reaction to fire requirements

RoHS-II/-III (2011/65/EU & 2015/863): 2023

Our products, demonstrate full adherence to the regulatory stipulations of the EU Directive 2011/65/EU (RoHS-II) and its corresponding delegated directive 2015/863 (RoHS-III).

WFD: 2023

Compliant to Waste Framework Directive

SCIP: 2023

Compliant - Does Not Contain Substances of Concern In articles as such or in complex objects (Products)

POPs (EU) No 2019/1021

EU Regulation for the restriction of Persistent Organic Pollutants.

Part Number Table

Part Number	Description
100-071	Excel Solid Cat6 Cable U/UTP LSOH CPR Euroclass Dca 305 m Box Violet
100-071-1000M	Excel Solid Cat6 Cable U/UTP LSOH CPR Euroclass Dca 1000 m Reel Violet
100-071-500M	Excel Solid Cat6 Cable U/UTP LSOH CPR Euroclass Dca 500 m Reel Violet
100-072	Excel Solid Cat6 Cable U/UTP LSOH CPR Euroclass Dca 305 m Box Green
100-074	Excel Solid Cat6 Cable U/UTP LSOH CPR Euroclass Dca 305 m Box White
100-074-1000M	Excel Solid Cat6 Cable U/UTP LSOH CPR Euroclass Dca 1000 m Reel White
100-074-500M	Excel Solid Cat6 Cable U/UTP LSOH CPR Euroclass Dca 500 m Reel White
100-075	Excel Solid Cat6 Cable U/UTP LSOH CPR Euroclass Dca 305 m Box Orange
100-078	Excel Solid Cat6 Cable U/UTP LSOH CPR Euroclass Dca 305 m Box Black
100-097	Excel Solid Cat6 Cable U/UTP LSOH CPR Euroclass Dca 305 m Box Red
100-098	Excel Solid Cat6 Cable U/UTP LSOH CPR Euroclass Dca 305 m Box Blue
100-099	Excel Solid Cat6 Cable U/UTP LSOH CPR Euroclass Dca 305 m Box Yellow
100-103	Excel Solid Cat6 Dual Cable U/UTP LSOH CPR Euroclass Dca 500 m Reel White

Excel is a world class premium performing end to end infrastructure solution designed, Manufactured, supported and delivered without compromise.

Contact us at sales@excel-networking.com



E&OE. Excel is a registered trade name of Mayflex Holdings Ltd.