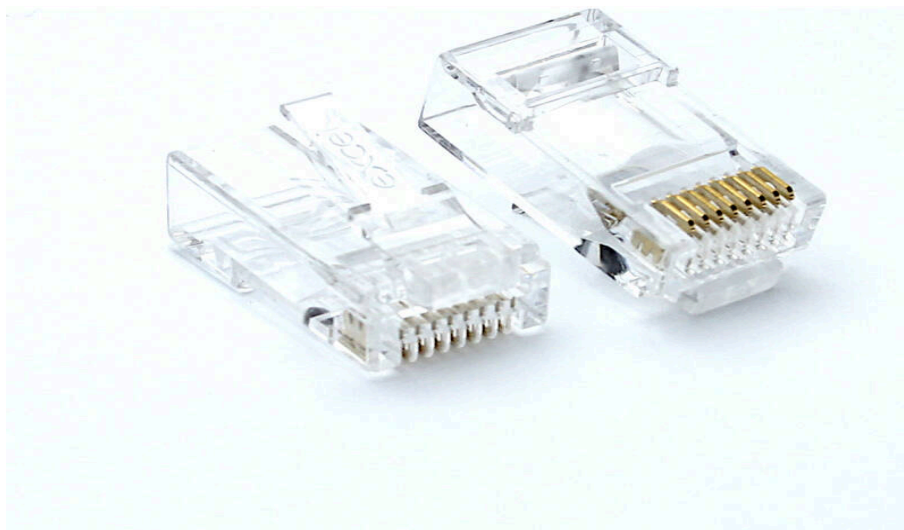


Excel Fast RJ45 Plug Suitable for U/UTP Cat5e and Cat6 (100-Pack)

Part Code: 100-116-100

sales@excel-networking.com
excel-networking.com

CIBSE TM65 Embodied Carbon: 1.728 kg CO2e



Main Features

- / Easy to use
- / Ergonomic cushion handles
- / Crimps plug and trims wires
- / Fast Plugs (100-116-100)
- / Fast Plugs + Boots (100-117-100)
- / CIBSE TM65 Embodied Carbon: 1.728 kg CO2e

Product Overview

The Excel Fast RJ45 Termination tool is the easiest way to terminate and crimp the Excel Fast RJ45 plugs. Featuring ergonomic ratchet & release cushion handles, the termination tool makes easy work of crimping the RJ45 Plug whilst trimming the excess wire leaving the end of the plug completely flush.

When using the Excel Fast Boots (sold separately), the tool will help align the boots to the RJ45 plug.

Product Specifications

Excel Fast RJ45 Plug Suitable for U/UTP Cat5e and Cat6 (100-Pack)

Part Code: 100-116-100

sales@excel-networking.com
excel-networking.com

Feature	Values
Model	Plug (Male)
Type of connector	RJ45 8(8)
Shielded	no
Category	5E/6
Connection type	Crimp
Requires termination tool	yes
Suitable for round cable	yes
Suitable for flat cable	yes
Suitable for stranded core	yes
Suitable for solid cores	yes

Additional specifications

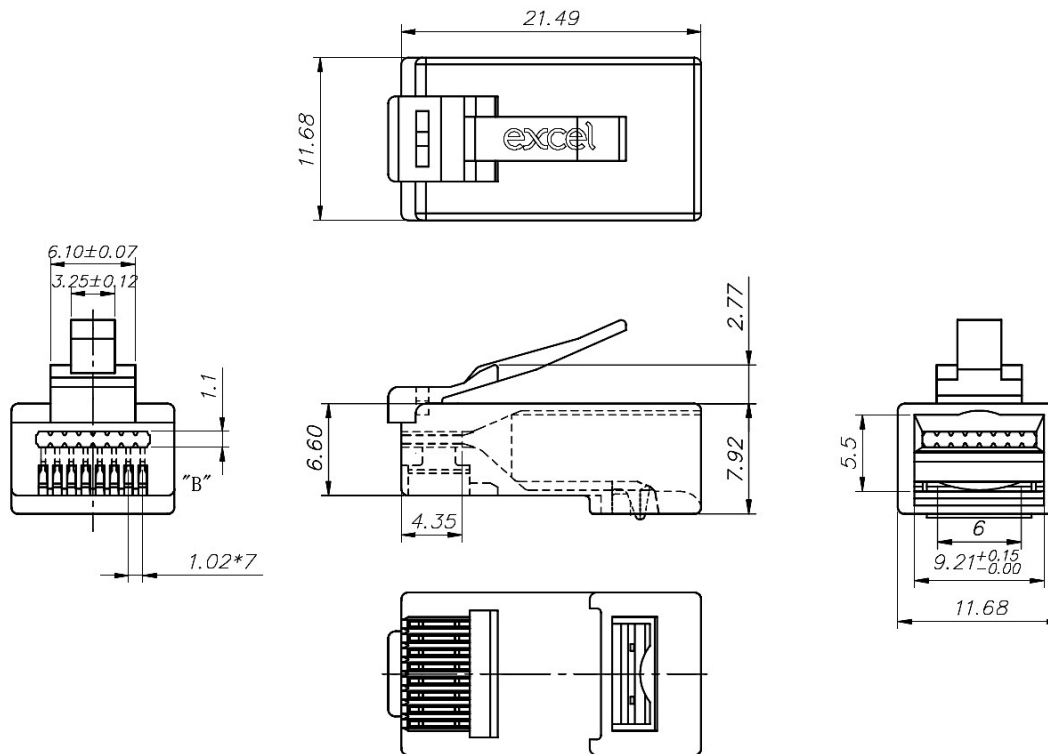
Features	Values
Housing material	Polycarbonate
Contact type	Three prong pin (fits solid/stranded wires)
Gold plating	50 micro-inch

Excel Fast RJ45 Plug Suitable for U/UTP Cat5e and Cat6 (100-Pack)

Part Code: 100-116-100

sales@excel-networking.com
excel-networking.com

Product drawing



Standards

Applicable standard	Detail
UL-94-V-0 (plug only)	Burning stops within 10 seconds after two applications of ten seconds each of a flame to a test bar. NO flaming drips are allowed.
ISO/IEC 11801:2017	Information technology - Generic cabling for customer premises: Part 1 General Requirements
EN 50173-1:2018	Information technology - Generic cabling systems - General requirements
ANSI/TIA 568-D	Balanced Twisted-Pair Telecommunications Cabling and Components Standards

Excel Fast RJ45 Plug Suitable for U/UTP Cat5e and Cat6 (100-Pack)

Part Code: 100-116-100

sales@excel-networking.com
excel-networking.com

Directive 2011/65/EU (RoHS II)	Restriction of the Use of Certain Hazardous Substances in Electrical and Electronic Equipment — compliant. Applies within EU member states).
Directive (EU) 2015/863 (RoHS III)	Amending Directive 2011/65/EU to add four phthalates (DEHP, BBP, DBP, DIBP) to Annex II — compliant.
Directive 2008/98/EC (WFD)	Waste Framework Directive — compliant. Implemented in the UK through the Waste (England and Wales) Regulations 2011 (SI 2011 No. 988).
ECHA SCIP Database	Compliant; product does not contain SVHCs (Substances of Very High Concern) as defined under REACH Article 33(1). Submission obligations met under EU REACH and UK REACH.
Regulation (EU) 2019/1021 (POPs)	EU Regulation on Persistent Organic Pollutants — compliant. For Great Britain, compliance is aligned with the Persistent Organic Pollutants (Amendment) (EU Exit) Regulations 2020 (SI 2020 No. 1355).
UK SI 2012 No. 3032	The Restriction of the Use of Certain Hazardous Substances in Electrical and Electronic Equipment Regulations 2012 (UK RoHS) — compliant for Great Britain. Retained EU law, as amended by the Product Safety and Metrology (Amendment etc.) (EU Exit) Regulations 2019.

Part Code Table

Part Code	Description
100-116-100	Excel Fast RJ45 Plug Suitable for U/UTP Cat5e and Cat6 (100-Pack)