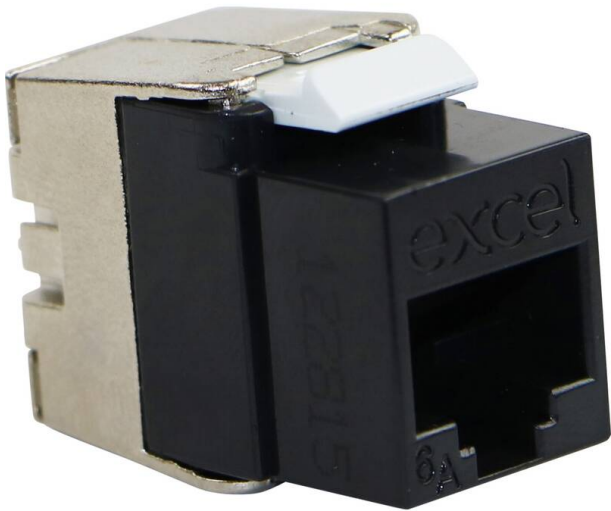


Excel Cat6A UTP Unscreened Low Profile Keystone Jack Toolless Black (Box 24)

Item Code: 100-182-BK-24



- High quality polymer housing with a die cast metallic back
- Toolless termination design
- Low profile design - just 28 mm overall depth
- Supports 10 Gigabit Ethernet application
- Choice of colours
- 3rd Party ISO11801 2nd Edition verification
- CIBSE TM65 Embodied Carbon: 2.444 kg CO2e

Product Overview

Excel Cat6a UTP Unscreened Low Profile Keystone Jack Toolless Black, available as part of our range of excel cat6a keystone jacks for RJ45 network connections. This Low Profile Cat6a Keystone Jack is a reduced size toolless termination RJ45 socket which allows for multiple cable entry directions when this jack is mounted in a standard depth back box. This supports options including flush shutters at the outlet and angled shutters often used with keystone jacks.

Product Specifications

Feature	Values
Model	Jack
Type of connector	RJ45 8(8)
Shielded	no
Category	6A (IEC)
Requires termination tool	no
Suitable for round cable	yes
Suitable for flat cable	no

Excel Cat6A UTP Unscreened Low Profile Keystone Jack Toolless Black (Box 24)

Item Code: 100-182-BK-24



Suitable for solid core	yes
Colour	Black
AWG-range	22...26

Part Number Table

Part Number	Description
100-182-BK	Excel Cat6A UTP Unscreened Low Profile Keystone Jack Toolless Black
100-182-BK-24	Excel Cat6A UTP Unscreened Low Profile Keystone Jack Toolless Black (Box 24)
100-182-WT	Excel Cat6A UTP Unscreened Low Profile Keystone Jack Toolless White
100-182-WT-24	Excel Cat6A UTP Unscreened Low Profile Keystone Jack Toolless White (Box 24)

Excel is a world class premium performing end to end infrastructure solution designed, Manufactured, supported and delivered without compromise.

Contact us at sales@excel-networking.com



E&OE. Excel is a registered trade name of Mayflex Holdings Ltd.