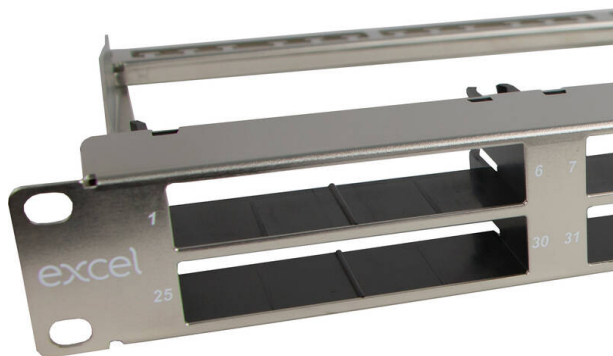


Excel ExpressNet 8-Module Unloaded Modular Panel 1U Silver

Item Code: 100-231



✕ Available in 4/8 modules

✕ Accepts Copper & Fibre ExpressNet Modules

✕ 1U of Rack Space

✕ Toolless assembly and module fitting

✕ 25 Year system warranty

Product Overview

The Excel ExpressNet Panel accepts either and/or both copper and fibre modules. The ability to have fibre and copper presented in one panel offers flexibility in the installation, reduces required rack space and provides future proofing in system design.

Useful in the extremes of installations from data centres where the ExpressNet panel may aid separation of the routes of cabling, to a remote wall box that has a small number of fibre and copper links, the ExpressNet panel will suit any environment. The construction of the panel has a chrome colour finish and may be used for either screened or unscreened copper cabling and LC or MTP fibre connectivity. A 4 or 8 module ExpressNet panel is available, both using 1U of rack space.

Product Specifications

Feature	Values
Suitable for number of outlets / modules	48
Shielded	no
Category	Module dependent
Number of rack units (RU)	1
Colour	Silver
Mounting method	482.6 mm (19 inch) mounting
Height	44.4 mm
Width	482 mm
Depth	73 mm

Excel ExpressNet 8-Module Unloaded Modular Panel
1U Silver

Item Code: 100-231



Part Number Table

Part Number	Description
100-230	Excel ExpressNet 4-Module Unloaded Modular Panel 1U Silver
100-231	Excel ExpressNet 8-Module Unloaded Modular Panel 1U Silver

Excel is a world class premium performing end to end infrastructure solution designed,
Manufactured, supported and delivered without compromise.

Contact us at sales@excel-networking.com



E&OE. Excel is a registered trade name of Mayflex Holdings Ltd.