

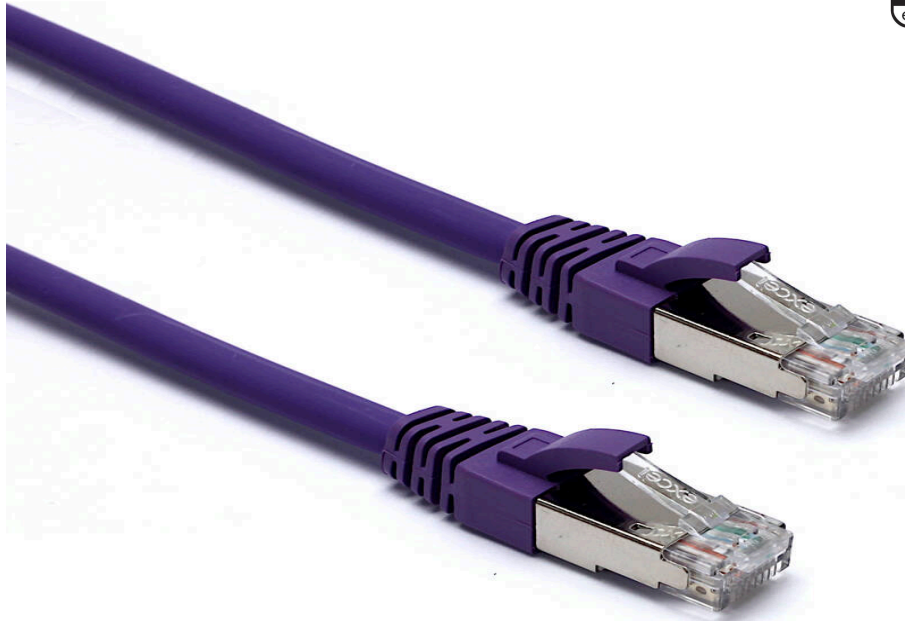
Excel Cat6A Patch Lead F/FTP Shielded LSOH Blade Booted 2 m Violet

excel
without compromise.

Part Code: 100-248

sales@excel-networking.com
excel-networking.com

CIBSE TM65 Embodied Carbon: 0.475 kg CO2e



Main Features

- / Specified to 500 MHz
- / Individual foil screen over each pair
- / LSOH outer sheath 6.2 mm Dia
- / Suitable for 10 Gigabit 10GBase-T, PoE++ applications
- / Blade style moulded strain relief boot with clip protector
- / CIBSE TM65 Embodied Carbon: 0.475 kg CO2e

Product Overview

Excel Category 6A (Augmented Category 6) patch leads take the performance capabilities of copper infrastructure to new levels. Designed to the current ISO and EIA/TIA standards for Class Ea augmented Category 6A performance these products are intended to deliver reliable, high network performance including support of emerging applications such as 10GBase-T, 10 Gigabit Ethernet.

Each Excel Category 6A patch lead consists of 4 twisted pairs of 26AWG stranded copper wires, an aluminium/polyester foil tape provides an individual screen for each pair. These pairs are then cabled together, with different lay lengths to ensure optimum performance. Staggered pin RJ45 Screened plugs, terminate the cable, and each lead is fitted with colour coded slimline moulded boots, suitable for use in high density router or switch blades.

Excel Cat6A Patch Lead F/FTP Shielded LSOH Blade Booted 2 m Violet

Part Code: 100-248

sales@excel-networking.com
excel-networking.com

Product Specifications

| Feature | Values |
|--------------------------------|-------------------|
| Cable type | F/FTP |
| Category | 6A (IEC) |
| Length | 2 m |
| Type of connector connection 1 | RJ45 8(8) |
| Type of connector connection 2 | RJ45 8(8) |
| Outer sheath colour | Violet |
| Strain relief boot | Moulded-on |
| Lockable | no |
| Strain relief boot colour | Violet |
| Flame retardant version | yes |
| Cable construction | 1x4 |
| AWG-size | 26 |
| Pin assignment | 1:1 |

Excel Cat6A Patch Lead F/FTP Shielded LSOH Blade Booted 2 m Violet

Part Code: 100-248

sales@excel-networking.com
excel-networking.com

Product drawing



Standards

| Applicable standard | Detail |
|--------------------------------|--|
| ISO/IEC 11801-1:2017 | Information technology - Generic cabling for customer premises: Part 1 General Requirements |
| EN 50173-1:2018 | Information technology. Generic cabling systems - General requirements |
| ANSI/TIA 568-2.D | Balanced Twisted-Pair Telecommunications Cabling and Components Standards |
| IEC 61156-5:2009+AMD1:2012 CSV | Multicore and symmetrical pair/quad cables for digital communications - Part 5: Symmetrical pair/quad cables with transmission characteristics up to 1 000 MHz - Horizontal floor wiring - Sectional specification |
| IEC 60332-1-2:2004 | Tests on electric and optical fibre cables under fire conditions. Test for vertical flame propagation for a single insulated wire or cable. Procedure for 1 kW pre-mixed flame |

Excel Cat6A Patch Lead F/FTP Shielded LSOH Blade Booted 2 m Violet

Part Code: 100-248

sales@excel-networking.com
excel-networking.com

| | |
|------------------------------------|--|
| IEC 61034-2:2005+A1:2013 | Measurement of smoke density of cables burning under defined conditions – Part 2: Test procedure and requirements |
| Directive 2011/65/EU (RoHS II) | Restriction of the Use of Certain Hazardous Substances in Electrical and Electronic Equipment — compliant. Applies within EU member states). |
| Directive (EU) 2015/863 (RoHS III) | Amending Directive 2011/65/EU to add four phthalates (DEHP, BBP, DBP, DIBP) to Annex II — compliant. |
| Directive 2008/98/EC (WFD) | Waste Framework Directive — compliant. Implemented in the UK through the Waste (England and Wales) Regulations 2011 (SI 2011 No. 988). |
| ECHA SCIP Database | Compliant; product does not contain SVHCs (Substances of Very High Concern) as defined under REACH Article 33(1). Submission obligations met under EU REACH and UK REACH. |
| Regulation (EU) 2019/1021 (POPs) | EU Regulation on Persistent Organic Pollutants — compliant. For Great Britain, compliance is aligned with the Persistent Organic Pollutants (Amendment) (EU Exit) Regulations 2020 (SI 2020 No. 1355). |
| UK SI 2012 No. 3032 | The Restriction of the Use of Certain Hazardous Substances in Electrical and Electronic Equipment Regulations 2012 (UK RoHS) — compliant for Great Britain. Retained EU law, as amended by the Product Safety and Metrology (Amendment etc.) (EU Exit) Regulations 2019. |

Part Code Table

| Part Code | Description |
|-----------|--|
| 100-142 | Excel Cat6A Patch Lead F/FTP Shielded LSOH Blade Booted 0.75 m Grey |
| 100-148 | Excel Cat6A Patch Lead F/FTP Shielded LSOH Blade Booted 1 m Grey |
| 100-149 | Excel Cat6A Patch Lead F/FTP Shielded LSOH Blade Booted 4 m Grey |
| 100-152 | Excel Cat6A Patch Lead F/FTP Shielded LSOH Blade Booted 2 m Grey |

Excel Cat6A Patch Lead F/FTP Shielded LSOH Blade Booted 2 m Violet

Part Code: 100-248

sales@excel-networking.com
excel-networking.com

| | |
|---------|--|
| 100-153 | Excel Cat6A Patch Lead F/FTP Shielded LSOH Blade Booted 3 m Grey |
| 100-154 | Excel Cat6A Patch Lead F/FTP Shielded LSOH Blade Booted 5 m Grey |
| 100-157 | Excel Cat6A Patch Lead F/FTP Shielded LSOH Blade Booted 2 m Blue |
| 100-158 | Excel Cat6A Patch Lead F/FTP Shielded LSOH Blade Booted 3 m Blue |
| 100-159 | Excel Cat6A Patch Lead F/FTP Shielded LSOH Blade Booted 1 m Blue |
| 100-160 | Excel Cat6A Patch Lead F/FTP Shielded LSOH Blade Booted 5 m Blue |
| 100-161 | Excel Cat6A Patch Lead F/FTP Shielded LSOH Blade Booted 1 m Red |
| 100-162 | Excel Cat6A Patch Lead F/FTP Shielded LSOH Blade Booted 2 m Red |
| 100-163 | Excel Cat6A Patch Lead F/FTP Shielded LSOH Blade Booted 3 m Red |
| 100-165 | Excel Cat6A Patch Lead F/FTP Shielded LSOH Blade Booted 5 m Red |
| 100-166 | Excel Cat6A Patch Lead F/FTP Shielded LSOH Blade Booted 1 m Yellow |
| 100-167 | Excel Cat6A Patch Lead F/FTP Shielded LSOH Blade Booted 2 m Yellow |
| 100-168 | Excel Cat6A Patch Lead F/FTP Shielded LSOH Blade Booted 3 m Yellow |
| 100-170 | Excel Cat6A Patch Lead F/FTP Shielded LSOH Blade Booted 5 m Yellow |
| 100-171 | Excel Cat6A Patch Lead F/FTP Shielded LSOH Blade Booted 2 m Green |
| 100-172 | Excel Cat6A Patch Lead F/FTP Shielded LSOH Blade Booted 3 m Green |
| 100-173 | Excel Cat6A Patch Lead F/FTP Shielded LSOH Blade Booted 1 m Green |
| 100-174 | Excel Cat6A Patch Lead F/FTP Shielded LSOH Blade Booted 5 m Green |
| 100-176 | Excel Cat6A Patch Lead F/FTP Shielded LSOH Blade Booted 0.5 m Grey |
| 100-177 | Excel Cat6A Patch Lead F/FTP Shielded LSOH Blade Booted 10 m Grey |
| 100-178 | Excel Cat6A Patch Lead F/FTP Shielded LSOH Blade Booted 7 m Grey |
| 100-220 | Excel Cat6A Patch Lead F/FTP Shielded LSOH Blade Booted 0.5m Blue |
| 100-221 | Excel Cat6A Patch Lead F/FTP Shielded LSOH Blade Booted 0.5m Red |
| 100-222 | Excel Cat6A Patch Lead F/FTP Shielded LSOH Blade Booted 0.5 m Yellow |
| 100-223 | Excel Cat6A Patch Lead F/FTP Shielded LSOH Blade Booted 0.5 m Green |

Excel Cat6A Patch Lead F/FTP Shielded LSOH Blade Booted 2 m Violet

Part Code: 100-248

sales@excel-networking.com
excel-networking.com

| | |
|---------|--|
| 100-224 | Excel Cat6A Patch Lead F/FTP Shielded LSOH Blade Booted 0.5 m White |
| 100-225 | Excel Cat6A Patch Lead F/FTP Shielded LSOH Blade Booted 0.5 m Black |
| 100-226 | Excel Cat6A Patch Lead F/FTP Shielded LSOH Blade Booted 0.5m Pink |
| 100-227 | Excel Cat6A Patch Lead F/FTP Shielded LSOH Blade Booted 0.5 m Orange |
| 100-228 | Excel Cat6A Patch Lead F/FTP Shielded LSOH Blade Booted 0.5 m Violet |
| 100-238 | Excel Cat6A Patch Lead F/FTP Shielded LSOH Blade Booted 1 m White |
| 100-239 | Excel Cat6A Patch Lead F/FTP Shielded LSOH Blade Booted 1 m Black |
| 100-240 | Excel Cat6A Patch Lead F/FTP Shielded LSOH Blade Booted 1 m Pink |
| 100-241 | Excel Cat6A Patch Lead F/FTP Shielded LSOH Blade Booted 1 m Orange |
| 100-242 | Excel Cat6A Patch Lead F/FTP Shielded LSOH Blade Booted 1 m Violet |
| 100-244 | Excel Cat6A Patch Lead F/FTP Shielded LSOH Blade Booted 2 m White |
| 100-245 | Excel Cat6A Patch Lead F/FTP Shielded LSOH Blade Booted 2 m Black |
| 100-246 | Excel Cat6A Patch Lead F/FTP Shielded LSOH Blade Booted 2 m Pink |
| 100-247 | Excel Cat6A Patch Lead F/FTP Shielded LSOH Blade Booted 2 m Orange |
| 100-248 | Excel Cat6A Patch Lead F/FTP Shielded LSOH Blade Booted 2 m Violet |
| 100-250 | Excel Cat6A Patch Lead F/FTP Shielded LSOH Blade Booted 3 m White |
| 100-251 | Excel Cat6A Patch Lead F/FTP Shielded LSOH Blade Booted 3 m Black |
| 100-252 | Excel Cat6A Patch Lead F/FTP Shielded LSOH Blade Booted 3 m Pink |
| 100-253 | Excel Cat6A Patch Lead F/FTP Shielded LSOH Blade Booted 3 m Orange |
| 100-254 | Excel Cat6A Patch Lead F/FTP Shielded LSOH Blade Booted 3 m Violet |
| 100-256 | Excel Cat6A Patch Lead F/FTP Shielded LSOH Blade Booted 5 m White |
| 100-257 | Excel Cat6A Patch Lead F/FTP Shielded LSOH Blade Booted 5 m Black |
| 100-258 | Excel Cat6A Patch Lead F/FTP Shielded LSOH Blade Booted 5 m Pink |
| 100-259 | Excel Cat6A Patch Lead F/FTP Shielded LSOH Blade Booted 5 m Orange |
| 100-260 | Excel Cat6A Patch Lead F/FTP Shielded LSOH Blade Booted 5 m Violet |

Excel Cat6A Patch Lead F/FTP Shielded LSOH Blade Booted 2 m Violet

Part Code: 100-248

sales@excel-networking.com
excel-networking.com

| | |
|---------|--|
| 100-261 | Excel Cat6A Patch Lead F/FTP Shielded LSOH Blade Booted 10 m Blue |
| 100-262 | Excel Cat6A Patch Lead F/FTP Shielded LSOH Blade Booted 10 m Red |
| 100-263 | Excel Cat6A Patch Lead F/FTP Shielded LSOH Blade Booted 10 m Yellow |
| 100-264 | Excel Cat6A Patch Lead F/FTP Shielded LSOH Blade Booted 10 m Green |
| 100-265 | Excel Cat6A Patch Lead F/FTP Shielded LSOH Blade Booted 15 m Grey |
| 100-266 | Excel Cat6A Patch Lead F/FTP Shielded LSOH Blade Booted 15 m Blue |
| 100-267 | Excel Cat6A Patch Lead F/FTP Shielded LSOH Blade Booted 15 m Red |
| 100-268 | Excel Cat6A Patch Lead F/FTP Shielded LSOH Blade Booted 15 m Yellow |
| 100-269 | Excel Cat6A Patch Lead F/FTP Shielded LSOH Blade Booted 15 m Green |
| 100-279 | Excel Cat6A Patch Lead F/FTP Shielded LSOH Blade Booted 10 m White |
| 100-543 | Excel Cat6A Patch Lead F/FTP Shielded LSOH Blade Booted 20 m Grey |
| 100-544 | Excel Cat6A Patch Lead F/FTP Shielded LSOH Blade Booted 20 m Blue |
| 100-545 | Excel Cat6A Patch Lead F/FTP Shielded LSOH Blade Booted 20 m Red |
| 100-546 | Excel Cat6A Patch Lead F/FTP Shielded LSOH Blade Booted 20 m Yellow |
| 100-547 | Excel Cat6A Patch Lead F/FTP Shielded LSOH Blade Booted 20 m Green |
| 100-611 | Excel Cat6A Patch Lead F/FTP Shielded LSOH Blade Booted 20 m White |
| 101-130 | Excel Cat6A Patch Lead F/FTP Shielded LSOH Blade Booted 0.3m Grey |
| 101-131 | Excel Cat6A Patch Lead F/FTP Shielded LSOH Blade Booted 0.3m Blue |
| 101-132 | Excel Cat6A Patch Lead F/FTP Shielded LSOH Blade Booted 0.3 m Red |
| 101-133 | Excel Cat6A Patch Lead F/FTP Shielded LSOH Blade Booted 0.3 m Yellow |
| 101-134 | Excel Cat6A Patch Lead F/FTP Shielded LSOH Blade Booted 0.3 m Green |
| 101-135 | Excel Cat6A Patch Lead F/FTP Shielded LSOH Blade Booted 0.3m White |
| 101-136 | Excel Cat6A Patch Lead F/FTP Shielded LSOH Blade Booted 0.3m Black |
| 101-137 | Excel Cat6A Patch Lead F/FTP Shielded LSOH Blade Booted 0.3m Pink |
| 101-138 | Excel Cat6A Patch Lead F/FTP Shielded LSOH Blade Booted 0.3 m Orange |

Excel Cat6A Patch Lead F/FTP Shielded LSOH Blade Booted 2 m Violet

Part Code: 100-248

sales@excel-networking.com
excel-networking.com

| | |
|---------|--|
| 101-139 | Excel Cat6A Patch Lead F/FTP Shielded LSOH Blade Booted 0.3 m Violet |
| 101-140 | Excel Cat6A Patch Lead F/FTP Shielded LSOH Blade Booted 1.5 m Grey |
| 101-141 | Excel Cat6A Patch Lead F/FTP Shielded LSOH Blade Booted 1.5 m Blue |
| 101-142 | Excel Cat6A Patch Lead F/FTP Shielded LSOH Blade Booted 1.5 m Red |
| 101-143 | Excel Cat6A Patch Lead F/FTP Shielded LSOH Blade Booted 1.5 m Yellow |
| 101-144 | Excel Cat6A Patch Lead F/FTP Shielded LSOH Blade Booted 1.5 m Green |
| 101-145 | Excel Cat6A Patch Lead F/FTP Shielded LSOH Blade Booted 1.5 m White |
| 101-146 | Excel Cat6A Patch Lead F/FTP Shielded LSOH Blade Booted 1.5 m Black |
| 101-147 | Excel Cat6A Patch Lead F/FTP Shielded LSOH Blade Booted 1.5 m Pink |
| 101-148 | Excel Cat6A Patch Lead F/FTP Shielded LSOH Blade Booted 1.5 m Orange |
| 101-149 | Excel Cat6A Patch Lead F/FTP Shielded LSOH Blade Booted 1.5 m Violet |