

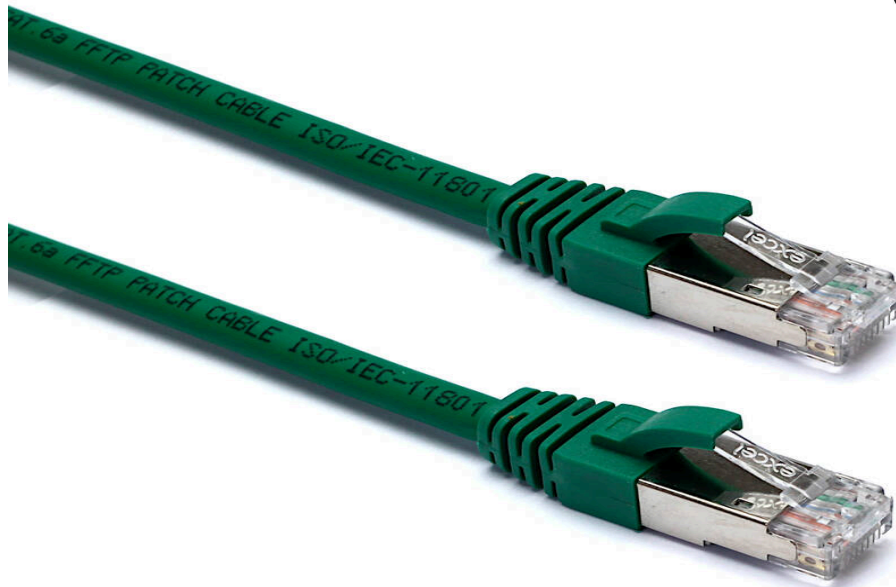
Excel Cat6A Patch Lead F/FTP Shielded LSOH Blade Booted 10 m Green

excel
without compromise.

Part Code: 100-264

sales@excel-networking.com
excel-networking.com

CIBSE TM65 Embodied Carbon: 2.096 kg CO2e



Main Features

- / Specified to 500MHz
- / Individual foil screen over each pair
- / CIBSE TM65 Embodied Carbon: 2.096 kg CO2e
- / Suitable for 10 Gigabit, 10GBase-T, Ethernet application
- / Blade style moulded strain relief boot with clip protector

Product Overview

Excel Category 6A (Augmented Category 6) patch leads take the performance capabilities of copper infrastructure to new levels. Designed to the current ISO and EIA/TIA standards for Class Ea augmented Category 6A performance these products are intended to deliver reliable, high network performance including support of emerging applications such as 10GBase-T, 10 Gigabit Ethernet.

Each Excel Category 6A patch leads consists of 4 twisted pairs of 26AWG stranded copper wires, an aluminium/polyester foil tape provides an individual screen for each pair. These pairs are then cabled together, with different lay lengths to ensure optimum performance. Staggered pin RJ45 Screened plugs, terminate the cable, and each lead is fitted with colour coded slimline moulded boots, suitable for use in high density router or switch blades.

Excel Cat6A Patch Lead F/FTP Shielded LSOH Blade Booted 10 m Green

Part Code: 100-264

sales@excel-networking.com
excel-networking.com

Product Specifications

Feature	Values
Cable type	F/FTP
Category	6A (IEC)
Length	10 m
Type of connector connection 1	RJ45 8(8)
Type of connector connection 2	RJ45 8(8)
Outer sheath colour	Green
Strain relief boot	Moulded-on
Lockable	no
Strain relief boot colour	Green
Flame retardant version	yes
Cable construction	1x4
AWG-size	26
Pin assignment	1:1

Excel Cat6A Patch Lead F/FTP Shielded LSOH Blade Booted 10 m Green

Part Code: 100-264

sales@excel-networking.com
excel-networking.com

Product drawing



Standards

Applicable standard	Detail
ISO/IEC 11801-1:2017	Information technology - Generic cabling for customer premises: Part 1 General Requirements
EN 50173-1:2018	Information technology. Generic cabling systems - General requirements
ANSI/TIA 568-2.D	Balanced Twisted-Pair Telecommunications Cabling and Components Standards
IEC 61156-5:2009+AMD1:2012 CSV	Multicore and symmetrical pair/quad cables for digital communications - Part 5: Symmetrical pair/quad cables with transmission characteristics up to 1 000 MHz - Horizontal floor wiring - Sectional specification
IEC 60332-1-2:2004	Tests on electric and optical fibre cables under fire conditions. Test for vertical flame propagation for a single insulated wire or cable. Procedure for 1 kW pre-mixed flame

Excel Cat6A Patch Lead F/FTP Shielded LSOH Blade Booted 10 m Green

Part Code: 100-264

sales@excel-networking.com
excel-networking.com

IEC 61034-2:2005+A1:2013	Measurement of smoke density of cables burning under defined conditions – Part 2: Test procedure and requirements
Directive 2011/65/EU (RoHS II)	Restriction of the Use of Certain Hazardous Substances in Electrical and Electronic Equipment — compliant. Applies within EU member states).
Directive (EU) 2015/863 (RoHS III)	Amending Directive 2011/65/EU to add four phthalates (DEHP, BBP, DBP, DIBP) to Annex II — compliant.
Directive 2008/98/EC (WFD)	Waste Framework Directive — compliant. Implemented in the UK through the Waste (England and Wales) Regulations 2011 (SI 2011 No. 988).
ECHA SCIP Database	Compliant; product does not contain SVHCs (Substances of Very High Concern) as defined under REACH Article 33(1). Submission obligations met under EU REACH and UK REACH.
Regulation (EU) 2019/1021 (POPs)	EU Regulation on Persistent Organic Pollutants — compliant. For Great Britain, compliance is aligned with the Persistent Organic Pollutants (Amendment) (EU Exit) Regulations 2020 (SI 2020 No. 1355).
UK SI 2012 No. 3032	The Restriction of the Use of Certain Hazardous Substances in Electrical and Electronic Equipment Regulations 2012 (UK RoHS) — compliant for Great Britain. Retained EU law, as amended by the Product Safety and Metrology (Amendment etc.) (EU Exit) Regulations 2019.

Part Code Table

Part Code	Description
100-142	Excel Cat6A Patch Lead F/FTP Shielded LSOH Blade Booted 0.75 m Grey
100-148	Excel Cat6A Patch Lead F/FTP Shielded LSOH Blade Booted 1 m Grey
100-149	Excel Cat6A Patch Lead F/FTP Shielded LSOH Blade Booted 4 m Grey
100-152	Excel Cat6A Patch Lead F/FTP Shielded LSOH Blade Booted 2 m Grey

Excel Cat6A Patch Lead F/FTP Shielded LSOH Blade Booted 10 m Green

Part Code: 100-264

sales@excel-networking.com
excel-networking.com

100-153	Excel Cat6A Patch Lead F/FTP Shielded LSOH Blade Booted 3 m Grey
100-154	Excel Cat6A Patch Lead F/FTP Shielded LSOH Blade Booted 5 m Grey
100-157	Excel Cat6A Patch Lead F/FTP Shielded LSOH Blade Booted 2 m Blue
100-158	Excel Cat6A Patch Lead F/FTP Shielded LSOH Blade Booted 3 m Blue
100-159	Excel Cat6A Patch Lead F/FTP Shielded LSOH Blade Booted 1 m Blue
100-160	Excel Cat6A Patch Lead F/FTP Shielded LSOH Blade Booted 5 m Blue
100-161	Excel Cat6A Patch Lead F/FTP Shielded LSOH Blade Booted 1 m Red
100-162	Excel Cat6A Patch Lead F/FTP Shielded LSOH Blade Booted 2 m Red
100-163	Excel Cat6A Patch Lead F/FTP Shielded LSOH Blade Booted 3 m Red
100-165	Excel Cat6A Patch Lead F/FTP Shielded LSOH Blade Booted 5 m Red
100-166	Excel Cat6A Patch Lead F/FTP Shielded LSOH Blade Booted 1 m Yellow
100-167	Excel Cat6A Patch Lead F/FTP Shielded LSOH Blade Booted 2 m Yellow
100-168	Excel Cat6A Patch Lead F/FTP Shielded LSOH Blade Booted 3 m Yellow
100-170	Excel Cat6A Patch Lead F/FTP Shielded LSOH Blade Booted 5 m Yellow
100-171	Excel Cat6A Patch Lead F/FTP Shielded LSOH Blade Booted 2 m Green
100-172	Excel Cat6A Patch Lead F/FTP Shielded LSOH Blade Booted 3 m Green
100-173	Excel Cat6A Patch Lead F/FTP Shielded LSOH Blade Booted 1 m Green
100-174	Excel Cat6A Patch Lead F/FTP Shielded LSOH Blade Booted 5 m Green
100-176	Excel Cat6A Patch Lead F/FTP Shielded LSOH Blade Booted 0.5 m Grey
100-177	Excel Cat6A Patch Lead F/FTP Shielded LSOH Blade Booted 10 m Grey
100-178	Excel Cat6A Patch Lead F/FTP Shielded LSOH Blade Booted 7 m Grey
100-220	Excel Cat6A Patch Lead F/FTP Shielded LSOH Blade Booted 0.5m Blue
100-221	Excel Cat6A Patch Lead F/FTP Shielded LSOH Blade Booted 0.5m Red
100-222	Excel Cat6A Patch Lead F/FTP Shielded LSOH Blade Booted 0.5 m Yellow
100-223	Excel Cat6A Patch Lead F/FTP Shielded LSOH Blade Booted 0.5 m Green

Excel Cat6A Patch Lead F/FTP Shielded LSOH Blade Booted 10 m Green

Part Code: 100-264

sales@excel-networking.com
excel-networking.com

100-224	Excel Cat6A Patch Lead F/FTP Shielded LSOH Blade Booted 0.5 m White
100-225	Excel Cat6A Patch Lead F/FTP Shielded LSOH Blade Booted 0.5 m Black
100-226	Excel Cat6A Patch Lead F/FTP Shielded LSOH Blade Booted 0.5m Pink
100-227	Excel Cat6A Patch Lead F/FTP Shielded LSOH Blade Booted 0.5 m Orange
100-228	Excel Cat6A Patch Lead F/FTP Shielded LSOH Blade Booted 0.5 m Violet
100-238	Excel Cat6A Patch Lead F/FTP Shielded LSOH Blade Booted 1 m White
100-239	Excel Cat6A Patch Lead F/FTP Shielded LSOH Blade Booted 1 m Black
100-240	Excel Cat6A Patch Lead F/FTP Shielded LSOH Blade Booted 1 m Pink
100-241	Excel Cat6A Patch Lead F/FTP Shielded LSOH Blade Booted 1 m Orange
100-242	Excel Cat6A Patch Lead F/FTP Shielded LSOH Blade Booted 1 m Violet
100-244	Excel Cat6A Patch Lead F/FTP Shielded LSOH Blade Booted 2 m White
100-245	Excel Cat6A Patch Lead F/FTP Shielded LSOH Blade Booted 2 m Black
100-246	Excel Cat6A Patch Lead F/FTP Shielded LSOH Blade Booted 2 m Pink
100-247	Excel Cat6A Patch Lead F/FTP Shielded LSOH Blade Booted 2 m Orange
100-248	Excel Cat6A Patch Lead F/FTP Shielded LSOH Blade Booted 2 m Violet
100-250	Excel Cat6A Patch Lead F/FTP Shielded LSOH Blade Booted 3 m White
100-251	Excel Cat6A Patch Lead F/FTP Shielded LSOH Blade Booted 3 m Black
100-252	Excel Cat6A Patch Lead F/FTP Shielded LSOH Blade Booted 3 m Pink
100-253	Excel Cat6A Patch Lead F/FTP Shielded LSOH Blade Booted 3 m Orange
100-254	Excel Cat6A Patch Lead F/FTP Shielded LSOH Blade Booted 3 m Violet
100-256	Excel Cat6A Patch Lead F/FTP Shielded LSOH Blade Booted 5 m White
100-257	Excel Cat6A Patch Lead F/FTP Shielded LSOH Blade Booted 5 m Black
100-258	Excel Cat6A Patch Lead F/FTP Shielded LSOH Blade Booted 5 m Pink
100-259	Excel Cat6A Patch Lead F/FTP Shielded LSOH Blade Booted 5 m Orange
100-260	Excel Cat6A Patch Lead F/FTP Shielded LSOH Blade Booted 5 m Violet

Excel Cat6A Patch Lead F/FTP Shielded LSOH Blade Booted 10 m Green



Part Code: 100-264

sales@excel-networking.com
excel-networking.com

100-261	Excel Cat6A Patch Lead F/FTP Shielded LSOH Blade Booted 10 m Blue
100-262	Excel Cat6A Patch Lead F/FTP Shielded LSOH Blade Booted 10 m Red
100-263	Excel Cat6A Patch Lead F/FTP Shielded LSOH Blade Booted 10 m Yellow
100-264	Excel Cat6A Patch Lead F/FTP Shielded LSOH Blade Booted 10 m Green
100-265	Excel Cat6A Patch Lead F/FTP Shielded LSOH Blade Booted 15 m Grey
100-266	Excel Cat6A Patch Lead F/FTP Shielded LSOH Blade Booted 15 m Blue
100-267	Excel Cat6A Patch Lead F/FTP Shielded LSOH Blade Booted 15 m Red
100-268	Excel Cat6A Patch Lead F/FTP Shielded LSOH Blade Booted 15 m Yellow
100-269	Excel Cat6A Patch Lead F/FTP Shielded LSOH Blade Booted 15 m Green
100-279	Excel Cat6A Patch Lead F/FTP Shielded LSOH Blade Booted 10 m White
100-543	Excel Cat6A Patch Lead F/FTP Shielded LSOH Blade Booted 20 m Grey
100-544	Excel Cat6A Patch Lead F/FTP Shielded LSOH Blade Booted 20 m Blue
100-545	Excel Cat6A Patch Lead F/FTP Shielded LSOH Blade Booted 20 m Red
100-546	Excel Cat6A Patch Lead F/FTP Shielded LSOH Blade Booted 20 m Yellow
100-547	Excel Cat6A Patch Lead F/FTP Shielded LSOH Blade Booted 20 m Green
100-611	Excel Cat6A Patch Lead F/FTP Shielded LSOH Blade Booted 20 m White
101-130	Excel Cat6A Patch Lead F/FTP Shielded LSOH Blade Booted 0.3m Grey
101-131	Excel Cat6A Patch Lead F/FTP Shielded LSOH Blade Booted 0.3m Blue
101-132	Excel Cat6A Patch Lead F/FTP Shielded LSOH Blade Booted 0.3 m Red
101-133	Excel Cat6A Patch Lead F/FTP Shielded LSOH Blade Booted 0.3 m Yellow
101-134	Excel Cat6A Patch Lead F/FTP Shielded LSOH Blade Booted 0.3 m Green
101-135	Excel Cat6A Patch Lead F/FTP Shielded LSOH Blade Booted 0.3m White
101-136	Excel Cat6A Patch Lead F/FTP Shielded LSOH Blade Booted 0.3m Black
101-137	Excel Cat6A Patch Lead F/FTP Shielded LSOH Blade Booted 0.3m Pink
101-138	Excel Cat6A Patch Lead F/FTP Shielded LSOH Blade Booted 0.3 m Orange

Excel Cat6A Patch Lead F/FTP Shielded LSOH Blade Booted 10 m Green

Part Code: 100-264

sales@excel-networking.com
excel-networking.com

101-139	Excel Cat6A Patch Lead F/FTP Shielded LSOH Blade Booted 0.3 m Violet
101-140	Excel Cat6A Patch Lead F/FTP Shielded LSOH Blade Booted 1.5 m Grey
101-141	Excel Cat6A Patch Lead F/FTP Shielded LSOH Blade Booted 1.5 m Blue
101-142	Excel Cat6A Patch Lead F/FTP Shielded LSOH Blade Booted 1.5 m Red
101-143	Excel Cat6A Patch Lead F/FTP Shielded LSOH Blade Booted 1.5 m Yellow
101-144	Excel Cat6A Patch Lead F/FTP Shielded LSOH Blade Booted 1.5 m Green
101-145	Excel Cat6A Patch Lead F/FTP Shielded LSOH Blade Booted 1.5 m White
101-146	Excel Cat6A Patch Lead F/FTP Shielded LSOH Blade Booted 1.5 m Black
101-147	Excel Cat6A Patch Lead F/FTP Shielded LSOH Blade Booted 1.5 m Pink
101-148	Excel Cat6A Patch Lead F/FTP Shielded LSOH Blade Booted 1.5 m Orange
101-149	Excel Cat6A Patch Lead F/FTP Shielded LSOH Blade Booted 1.5 m Violet