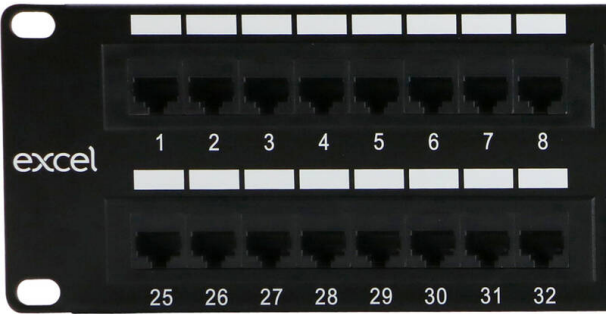


# Excel Cat6 48 Port Unscreened Patch Panel 2U LSA Punch Down Cable Management Black

Item Code: 100-306



✕ Available in 24 or 48 ports

✕ Backwards compatible

✕ Rear cable management

✕ LSA Style Termination Blocks

✕ Cage nuts and mini cable ties included

✕ T568A/B Wiring Configuration

✕ CIBSE TM65 Embodied Carbon: 0.034 kg CO2e

## Product Overview

Excel Cat6 48 Port Unscreened Patch Panel 2U LSA Punch Down Cable Management Black, available as part of a range of Cat6 Patch Panels in stock at Mayflex.

Excel Category 6 Unscreened Patch Panels have been designed to meet or exceed the latest ISO and TIA requirements for category 6 compliance.

Each panel has a screen-printed labelling field positioned above each port, included with the panel is a pre-printed self-adhesive labelling sheet, pre-numbered 1- 96, for fast and easy labelling on site.

Termination can be made using LSA compatible tools, and cable tie bridges are positioned between the IDC blocks to relieve cable stress. Each panel consists of a number of 8 way blocks of RJ45 sockets, housed in a high quality plastic moulding.

## Product Specifications

Feature	Values
Number of ports – loaded	48
Type of connector	RJ45 8(8)
Shielded	no
Category	6
Connection type	LSA
Number of rack units (RU)	2

# Excel Cat6 48 Port Unscreened Patch Panel 2U LSA Punch Down Cable Management Black

Item Code: 100-306



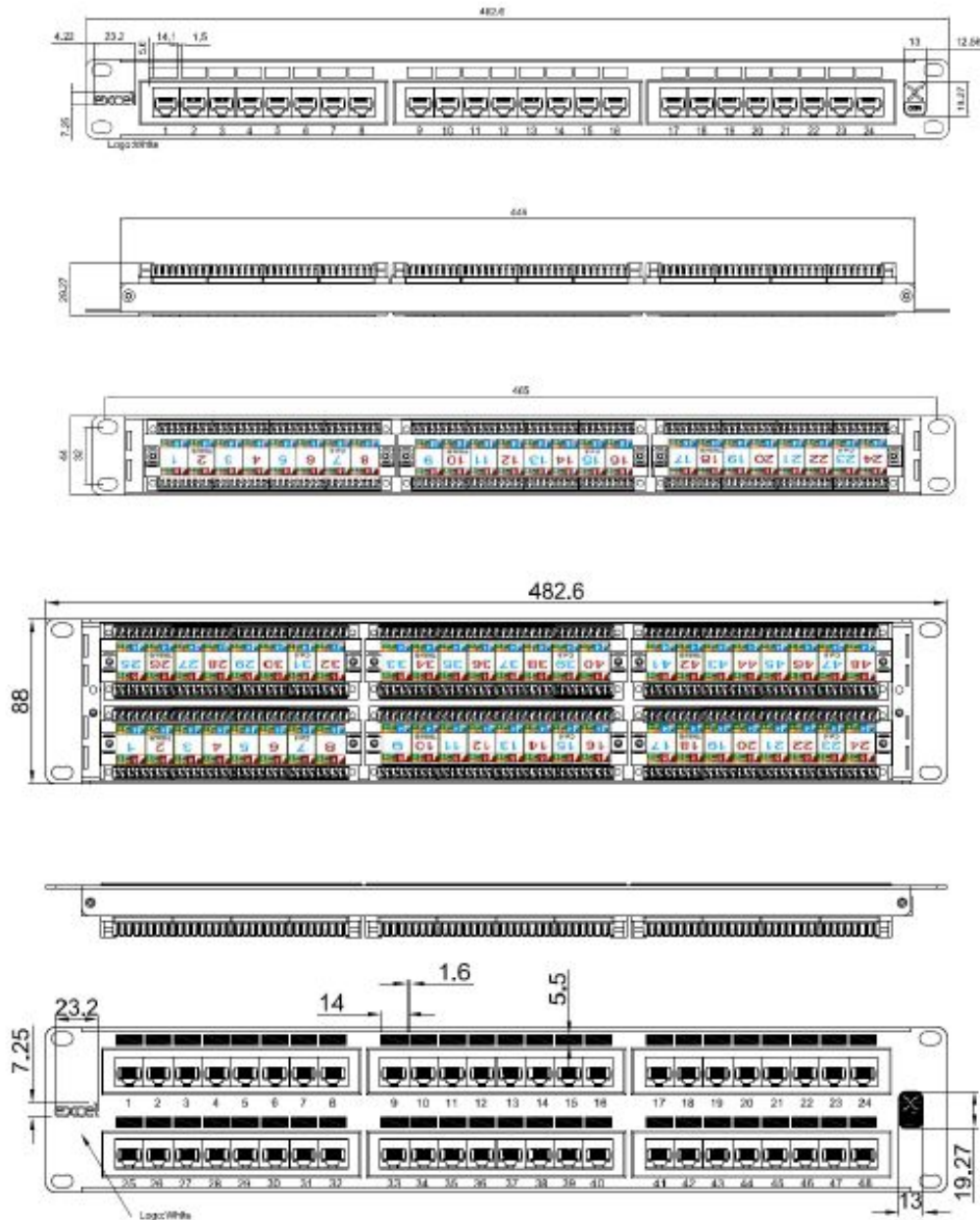
Colour	Black
Mounting method	482.6 mm (19 inch) mounting
Height	88 mm
Width	480 mm
Depth	33 mm

# Excel Cat6 48 Port Unscreened Patch Panel 2U LSA Punch Down Cable Management Black

Item Code: 100-306

**excel**  
without compromise.

## Product drawing



# Excel Cat6 48 Port Unscreened Patch Panel 2U LSA Punch Down Cable Management Black

Item Code: 100-306



## Additional specifications

Features	Values
Wiring Specification	T568A/T568B
RJ45 Jack Min life expectancy	750 insertions
RJ45 Jack contact	50 microinch gold over 100 microinch nickel undercoat
IDC Contacts Max life expectancy	200 terminations
Contact compatibility	22 to 26AWG
Operating Temperature Range	-10°C to 60°C
Storage Temperature Range	-40°C to 68°C
Relative Humidity	10% to 90%
Panel material	SPCC
Frame material	ABS
Jack housing material	PBT, 30% glass fiber filled
IDC material	Phosphor bronze, tin over nickel undercoat

## Standards

Applicable standard	Detail
ISO/IEC 11801-1:2017	Information technology - Generic cabling for customer premises: Part 1 General Requirements
IEC 61156-5:2009+AMD1:2012 CSV	Multicore and symmetrical pair/quad cables for digital communications - Part 5: Symmetrical pair/quad cables with transmission characteristics up to 1 000 MHz - Horizontal floor wiring - Sectional specification
EN 50173-1:2018	Information technology. Generic cabling systems - General requirements
EN 50173-2:2007 + A1:2010	Information technology. Generic cabling systems - Office premises
ANSI/TIA 568-2.D	Balanced Twisted-Pair Telecommunications Cabling and Components Standards
ANSI/EIA-310-E	Electronic Industries Association standard for horizontal spacing, vertical hole spacing, rack opening and front panel width
RoHS-II/-III (2011/65/EU & 2015/863): 2023	Our products, demonstrate full adherence to the regulatory stipulations of the EU Directive 2011/65/EU (RoHS-II) and its corresponding delegated directive 2015/863 (RoHS-III).

# Excel Cat6 48 Port Unscreened Patch Panel 2U LSA Punch Down Cable Management Black

Item Code: 100-306



WFD: 2023

Compliant to Waste Framework Directive

SCIP: 2023

Compliant - Does Not Contain Substances of Concern In articles as such or in complex objects (Products)

POPs (EU) No 2019/1021

EU Regulation for the restriction of Persistent Organic Pollutants.

## Part Number Table

Part Number	Description
100-304	Excel Cat6 24 Port Unscreened Patch Panel 1U LSA Punch Down Cable Management Black
100-306	Excel Cat6 48 Port Unscreened Patch Panel 2U LSA Punch Down Cable Management Black

Excel is a world class premium performing end to end infrastructure solution designed, Manufactured, supported and delivered without compromise.

Contact us at [sales@excel-networking.com](mailto:sales@excel-networking.com)



E&OE. Excel is a registered trade name of Mayflex Holdings Ltd.