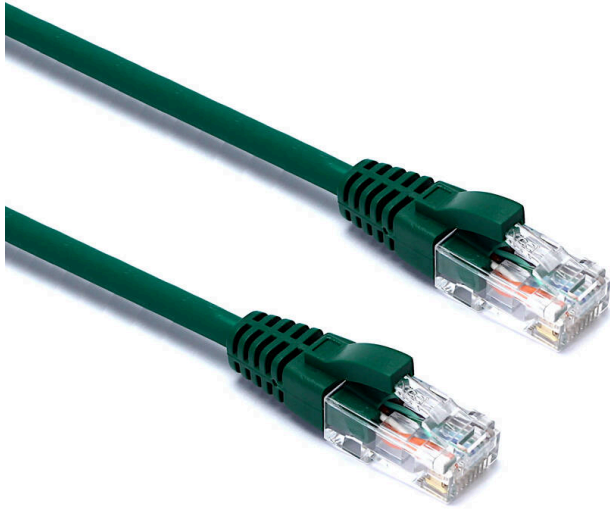


Excel Cat6 Patch Lead U/UTP Unshielded LSOH Blade Booted 20 m Green

Item Code: 100-343

excel
without compromise.



Cat6 compliant

Backward compatible

Choice of colours and lengths

Blade style "slimline" moulded strain relief boot with clip protector

LSOH outer sheath

"Stepped" RJ45 connector pins

CIBSE TM65 Embodied Carbon: 3.243 kg CO2e

Product Overview

Excel Category 6 U/UTP patch leads are manufactured and tested to ISO 11801, EN 50173 & TIA/EIA 568 requirements for patch cord assemblies and provide optimum performance levels for structured cabling installations.

Product Specifications

| Feature | Values |
|--------------------------------|------------|
| Cable type | U/UTP |
| Category | 6 |
| Length | 20 m |
| Type of connector connection 1 | RJ45 8(8) |
| Type of connector connection 2 | RJ45 8(8) |
| Outer sheath colour | Green |
| Strain relief boot | Moulded-on |
| Lockable | no |
| Strain relief boot colour | Green |

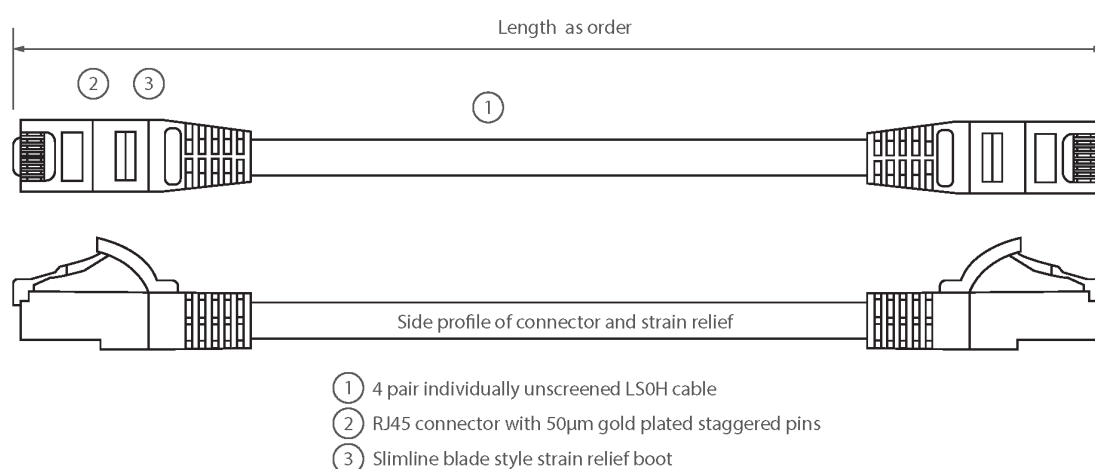
Excel Cat6 Patch Lead U/UTP Unshielded LSOH Blade Booted 20 m Green

Item Code: 100-343

excel
without compromise.

| | |
|-------------------------|-----|
| Flame retardant version | yes |
| Cable construction | 1x4 |
| AWG-size | 24 |
| Pin assignment | 1:1 |

Product drawing



Standards

| Applicable standard | Detail |
|--------------------------------|--------------------------------------------------------------------------------------------------------------------------------------------------------------------------------------------------------------------|
| ISO/IEC 11801-1:2017 | Information technology - Generic cabling for customer premises: Part 1 General Requirements |
| EN 50173-1:2018 | Information technology. Generic cabling systems - General requirements |
| ANSI/TIA 568-2.D | Balanced Twisted-Pair Telecommunications Cabling and Components Standards |
| IEC 61156-5:2009+AMD1:2012 CSV | Multicore and symmetrical pair/quad cables for digital communications - Part 5: Symmetrical pair/quad cables with transmission characteristics up to 1 000 MHz - Horizontal floor wiring - Sectional specification |
| IEC 60332-1-2:2004 | Tests on electric and optical fibre cables under fire conditions. Test for vertical flame propagation for a single insulated wire or cable. Procedure for 1 kW pre-mixed flame |
| IEC 61034-2:2005+A1:2013 | Measurement of smoke density of cables burning under |

Excel Cat6 Patch Lead U/UTP Unshielded LSOH Blade Booted 20 m Green

Item Code: 100-343



| | |
|------------------------------------|--------------------------------------------------------------------------------------------------------------------------------------------------------------------------------------------------------------------------------------------------------------------------|
| | defined conditions - Part 2: Test procedure and requirements |
| Directive 2011/65/EU (RoHS II) | Restriction of the Use of Certain Hazardous Substances in Electrical and Electronic Equipment — compliant. Applies within EU member states). |
| Directive (EU) 2015/863 (RoHS III) | Amending Directive 2011/65/EU to add four phthalates (DEHP, BBP, DBP, DIBP) to Annex II — compliant. |
| Directive 2008/98/EC (WFD) | Waste Framework Directive — compliant. Implemented in the UK through the Waste (England and Wales) Regulations 2011 (SI 2011 No. 988). |
| ECHA SCIP Database | Compliant; product does not contain SVHCs (Substances of Very High Concern) as defined under REACH Article 33(1). Submission obligations met under EU REACH and UK REACH. |
| Regulation (EU) 2019/1021 (POPs) | EU Regulation on Persistent Organic Pollutants — compliant. For Great Britain, compliance is aligned with the Persistent Organic Pollutants (Amendment) (EU Exit) Regulations 2020 (SI 2020 No. 1355). |
| UK SI 2012 No. 3032 | The Restriction of the Use of Certain Hazardous Substances in Electrical and Electronic Equipment Regulations 2012 (UK RoHS) — compliant for Great Britain. Retained EU law, as amended by the Product Safety and Metrology (Amendment etc.) (EU Exit) Regulations 2019. |

Part Number Table

| Part Number | Description |
|--------------|-------------------------------------------------------------------------|
| 100-310 | Excel Cat6 Patch Lead U/UTP Unshielded LSOH Blade Booted 1 m Grey |
| 100-311 | Excel Cat6 Patch Lead U/UTP Unshielded LSOH Blade Booted 2 m Grey |
| 100-312 | Excel Cat6 Patch Lead U/UTP Unshielded LSOH Blade Booted 3 m Grey |
| 100-314 | Excel Cat6 Patch Lead U/UTP Unshielded LSOH Blade Booted 5 m Grey |
| 100-315 | Excel Cat6 Patch Lead U/UTP Unshielded LSOH Blade Booted 1 m Red |
| 100-316 | Excel Cat6 Patch Lead U/UTP Unshielded LSOH Blade Booted 2 m Red |
| 100-317 | Excel Cat6 Patch Lead U/UTP Unshielded LSOH Blade Booted 3 m Red |
| 100-317 B-RD | Excel Cat6 Patch Lead U/UTP Unshielded LSOH Blade Booted 3 m Bright Red |
| 100-318 | Excel Cat6 Patch Lead U/UTP Unshielded LSOH Blade Booted 6 m Grey |
| 100-319 | Excel Cat6 Patch Lead U/UTP Unshielded LSOH Blade Booted 5 m Red |
| 100-320 | Excel Cat6 Patch Lead U/UTP Unshielded LSOH Blade Booted 1 m Green |

Excel Cat6 Patch Lead U/UTP Unshielded LSOH Blade Booted 20 m Green

Item Code: 100-343



| | |
|--------------|----------------------------------------------------------------------|
| 100-321 | Excel Cat6 Patch Lead U/UTP Unshielded LSOH Blade Booted 2 m Green |
| 100-322 | Excel Cat6 Patch Lead U/UTP Unshielded LSOH Blade Booted 3 m Green |
| 100-323 | Excel Cat6 Patch Lead U/UTP Unshielded LSOH Blade Booted 6 m Red |
| 100-324 | Excel Cat6 Patch Lead U/UTP Unshielded LSOH Blade Booted 5 m Green |
| 100-325 | Excel Cat6 Patch Lead U/UTP Unshielded LSOH Blade Booted 1 m Blue |
| 100-326 | Excel Cat6 Patch Lead U/UTP Unshielded LSOH Blade Booted 2 m Blue |
| 100-326-B-BU | Excel Cat6 Patch Lead U/UTP Unshielded LSOH Blade Booted 2 m Blue |
| 100-327 | Excel Cat6 Patch Lead U/UTP Unshielded LSOH Blade Booted 3 m Blue |
| 100-328 | Excel Cat6 Patch Lead U/UTP Unshielded LSOH Blade Booted 6 m Green |
| 100-329 | Excel Cat6 Patch Lead U/UTP Unshielded LSOH Blade Booted 5 m Blue |
| 100-330 | Excel Cat6 Patch Lead U/UTP Unshielded LSOH Blade Booted 1 m Yellow |
| 100-331 | Excel Cat6 Patch Lead U/UTP Unshielded LSOH Blade Booted 2 m Yellow |
| 100-331-B-YW | Excel Cat6 Patch Lead U/UTP Unshielded LSOH Blade Booted 2m Yellow |
| 100-332 | Excel Cat6 Patch Lead U/UTP Unshielded LSOH Blade Booted 3 m Yellow |
| 100-333 | Excel Cat6 Patch Lead U/UTP Unshielded LSOH Blade Booted 5 m Yellow |
| 100-333-B-YW | Excel Cat6 Patch Lead U/UTP Unshielded LSOH Blade Booted 5 m Yellow |
| 100-334 | Excel Cat6 Patch Lead U/UTP Unshielded LSOH Blade Booted 6 m Blue |
| 100-335 | Excel Cat6 Patch Lead U/UTP Unshielded LSOH Blade Booted 10 m Grey |
| 100-336 | Excel Cat6 Patch Lead U/UTP Unshielded LSOH Blade Booted 15 m Grey |
| 100-337 | Excel Cat6 Patch Lead U/UTP Unshielded LSOH Blade Booted 20 m Grey |
| 100-338 | Excel Cat6 Patch Lead U/UTP Unshielded LSOH Blade Booted 10 m Red |
| 100-339 | Excel Cat6 Patch Lead U/UTP Unshielded LSOH Blade Booted 15 m Red |
| 100-340 | Excel Cat6 Patch Lead U/UTP Unshielded LSOH Blade Booted 20 m Red |
| 100-341 | Excel Cat6 Patch Lead U/UTP Unshielded LSOH Blade Booted 10 m Green |
| 100-342 | Excel Cat6 Patch Lead U/UTP Unshielded LSOH Blade Booted 15 m Green |
| 100-343 | Excel Cat6 Patch Lead U/UTP Unshielded LSOH Blade Booted 20 m Green |
| 100-344 | Excel Cat6 Patch Lead U/UTP Unshielded LSOH Blade Booted 10 m Blue |
| 100-345 | Excel Cat6 Patch Lead U/UTP Unshielded LSOH Blade Booted 15 m Blue |
| 100-346 | Excel Cat6 Patch Lead U/UTP Unshielded LSOH Blade Booted 20 m Blue |
| 100-347 | Excel Cat6 Patch Lead U/UTP Unshielded LSOH Blade Booted 10 m Yellow |
| 100-348 | Excel Cat6 Patch Lead U/UTP Unshielded LSOH Blade Booted 15 m Yellow |
| 100-349 | Excel Cat6 Patch Lead U/UTP Unshielded LSOH Blade Booted 20 m Yellow |

Excel Cat6 Patch Lead U/UTP Unshielded LSOH Blade Booted 20 m Green

Item Code: 100-343



| | |
|------------|----------------------------------------------------------------------|
| 100-350 | Excel Cat6 Patch Lead U/UTP Unshielded LSOH Blade Booted 1 m Black |
| 100-351 | Excel Cat6 Patch Lead U/UTP Unshielded LSOH Blade Booted 6 m Yellow |
| 100-352 | Excel Cat6 Patch Lead U/UTP Unshielded LSOH Blade Booted 8 m Grey |
| 100-353 | Excel Cat6 Patch Lead U/UTP Unshielded LSOH Blade Booted 8 m Red |
| 100-354 | Excel Cat6 Patch Lead U/UTP Unshielded LSOH Blade Booted 8 m Green |
| 100-355 | Excel Cat6 Patch Lead U/UTP Unshielded LSOH Blade Booted 8 m Blue |
| 100-356 | Excel Cat6 Patch Lead U/UTP Unshielded LSOH Blade Booted 8 m Yellow |
| 100-357 | Excel Cat6 Patch Lead U/UTP Unshielded LSOH Blade Booted 4 m Grey |
| 100-358 | Excel Cat6 Patch Lead U/UTP Unshielded LSOH Blade Booted 4 m Red |
| 100-359 | Excel Cat6 Patch Lead U/UTP Unshielded LSOH Blade Booted 4 m Green |
| 100-360 | Excel Cat6 Patch Lead U/UTP Unshielded LSOH Blade Booted 2 m Black |
| 100-364 | Excel Cat6 Patch Lead U/UTP Unshielded LSOH Blade Booted 4 m Blue |
| 100-365 | Excel Cat6 Patch Lead U/UTP Unshielded LSOH Blade Booted 4 m Yellow |
| 100-371 | Excel Cat6 Patch Lead U/UTP Unshielded LSOH Blade Booted 3 m Black |
| 100-373 | Excel Cat6 Patch Lead U/UTP Unshielded LSOH Blade Booted 5 m Black |
| 100-387 | Excel Cat6 Patch Lead U/UTP Unshielded LSOH Blade Booted 1 m Violet |
| 100-388 | Excel Cat6 Patch Lead U/UTP Unshielded LSOH Blade Booted 2 m Violet |
| 100-389 | Excel Cat6 Patch Lead U/UTP Unshielded LSOH Blade Booted 3 m Violet |
| 100-390 | Excel Cat6 Patch Lead U/UTP Unshielded LSOH Blade Booted 10 m Violet |
| 100-391 | Excel Cat6 Patch Lead U/UTP Unshielded LSOH Blade Booted 20 m Violet |
| 100-392 | Excel Cat6 Patch Lead U/UTP Unshielded LSOH Blade Booted 5 m Violet |
| 100-393 | Excel Cat6 Patch Lead U/UTP Unshielded LSOH Blade Booted 15 m Violet |
| 100-395 | Excel Cat6 Patch Lead U/UTP Unshielded LSOH Blade Booted 0.5 m Grey |
| 100-400 | Excel Cat6 Patch Lead U/UTP Unshielded LSOH Blade Booted 7 m Black |
| 100-401 | Excel Cat6 Patch Lead U/UTP Unshielded LSOH Blade Booted 10 m Black |
| 100-402 | Excel Cat6 Patch Lead U/UTP Unshielded LSOH Blade Booted 7 m Orange |
| 100-403 | Excel Cat6 Patch Lead U/UTP Unshielded LSOH Blade Booted 0.3m Grey |
| 100-403-BK | Excel Cat6 Patch Lead U/UTP Unshielded LSOH Blade Booted 0.3m Black |
| 100-403-BU | Excel Cat6 Patch Lead U/UTP Unshielded LSOH Blade Booted 0.3m Blue |
| 100-403-GN | Excel Cat6 Patch Lead U/UTP Unshielded LSOH Blade Booted 0.3m Green |
| 100-403-OR | Excel Cat6 Patch Lead U/UTP Unshielded LSOH Blade Booted 0.3m Orange |
| 100-403-PK | Excel Cat6 Patch Lead U/UTP Unshielded LSOH Blade Booted 0.3m Pink |

Excel Cat6 Patch Lead U/UTP Unshielded LSOH Blade Booted 20 m Green

Item Code: 100-343



| | |
|------------|-----------------------------------------------------------------------|
| 100-403-RD | Excel Cat6 Patch Lead U/UTP Unshielded LSOH Blade Booted 0.3 m Red |
| 100-403-VT | Excel Cat6 Patch Lead U/UTP Unshielded LSOH Blade Booted 0.3m Violet |
| 100-403-WT | Excel Cat6 Patch Lead U/UTP Unshielded LSOH Blade Booted 0.3m White |
| 100-403-YW | Excel Cat6 Patch Lead U/UTP Unshielded LSOH Blade Booted 0.3m Yellow |
| 100-404 | Excel Cat6 Patch Lead U/UTP Unshielded LSOH Blade Booted 6 m Orange |
| 100-412 | Excel Cat6 Patch Lead U/UTP Unshielded LSOH Blade Booted 10 m Orange |
| 100-413 | Excel Cat6 Patch Lead U/UTP Unshielded LSOH Blade Booted 20 m Orange |
| 100-414 | Excel Cat6 Patch Lead U/UTP Unshielded LSOH Blade Booted 7 m Grey |
| 100-415 | Excel Cat6 Patch Lead U/UTP Unshielded LSOH Blade Booted 0.5 m White |
| 100-416 | Excel Cat6 Patch Lead U/UTP Unshielded LSOH Blade Booted 1 m White |
| 100-417 | Excel Cat6 Patch Lead U/UTP Unshielded LSOH Blade Booted 2 m White |
| 100-418 | Excel Cat6 Patch Lead U/UTP Unshielded LSOH Blade Booted 3 m White |
| 100-419 | Excel Cat6 Patch Lead U/UTP Unshielded LSOH Blade Booted 5 m White |
| 100-420 | Excel Cat6 Patch Lead U/UTP Unshielded LSOH Blade Booted 7 m White |
| 100-421 | Excel Cat6 Patch Lead U/UTP Unshielded LSOH Blade Booted 10 m White |
| 100-422 | Excel Cat6 Patch Lead U/UTP Unshielded LSOH Blade Booted 7 m Red |
| 100-423 | Excel Cat6 Patch Lead U/UTP Unshielded LSOH Blade Booted 7m Blue |
| 100-424 | Excel Cat6 Patch Lead U/UTP Unshielded LSOH Blade Booted 7 m Green |
| 100-425 | Excel Cat6 Patch Lead U/UTP Unshielded LSOH Blade Booted 7 m Yellow |
| 100-426 | Excel Cat6 Patch Lead U/UTP Unshielded LSOH Blade Booted 1 m Orange |
| 100-427 | Excel Cat6 Patch Lead U/UTP Unshielded LSOH Blade Booted 2 m Orange |
| 100-428 | Excel Cat6 Patch Lead U/UTP Unshielded LSOH Blade Booted 3 m Orange |
| 100-429 | Excel Cat6 Patch Lead U/UTP Unshielded LSOH Blade Booted 5 m Orange |
| 100-431 | Excel Cat6 Patch Lead U/UTP Unshielded LSOH Blade Booted 15 m Orange |
| 100-499 | Excel Cat6 Patch Lead U/UTP Unshielded LSOH Blade Booted 8 m Orange |
| 100-550 | Excel Cat6 Patch Lead U/UTP Unshielded LSOH Blade Booted 1.5 m Grey |
| 100-551 | Excel Cat6 Patch Lead U/UTP Unshielded LSOH Blade Booted 1.5 m Red |
| 100-552 | Excel Cat6 Patch Lead U/UTP Unshielded LSOH Blade Booted 1.5 m Blue |
| 100-553 | Excel Cat6 Patch Lead U/UTP Unshielded LSOH Blade Booted 1.5 m Black |
| 100-554 | Excel Cat6 Patch Lead U/UTP Unshielded LSOH Blade Booted 1.5 m Green |
| 100-555 | Excel Cat6 Patch Lead U/UTP Unshielded LSOH Blade Booted 1.5 m Yellow |
| 100-556 | Excel Cat6 Patch Lead U/UTP Unshielded LSOH Blade Booted 1.5 m White |

Excel Cat6 Patch Lead U/UTP Unshielded LSOH Blade Booted 20 m Green

Item Code: 100-343



| | |
|---------|--------------------------------------------------------------------------|
| 100-557 | Excel Cat6 Patch Lead U/UTP Unshielded LSOH Blade Booted 1.5 m Violet |
| 100-558 | Excel Cat6 Patch Lead U/UTP Unshielded LSOH Blade Booted 1.5 m Orange |
| 100-559 | Excel Cat6 Patch Lead U/UTP Unshielded LSOH Blade Booted 1 m Pink |
| 100-560 | Excel Cat6 Patch Lead U/UTP Unshielded LSOH Blade Booted 2 m Pink |
| 100-561 | Excel Cat6 Patch Lead U/UTP Unshielded LSOH Blade Booted 3 m Pink |
| 100-562 | Excel Cat6 Patch Lead U/UTP Unshielded LSOH Blade Booted 5 m Pink |
| 100-563 | Excel Cat6 Patch Lead U/UTP Unshielded LSOH Blade Booted 10 m Pink |
| 100-623 | Excel Cat6 Patch Lead U/UTP Unshielded LSOH Blade Booted 0.75 m Grey |
| 100-690 | Excel Cat6 Mini Patch Lead U/UTP Unshielded LSOH Blade Booted 1.5 m Blue |
| 100-691 | Excel Cat6 Mini Patch Lead U/UTP Unshielded LSOH Blade Booted 0.3m Green |

Excel is a world class premium performing end to end infrastructure solution designed,
Manufactured, supported and delivered without compromise.

Contact us at sales@excel-networking.com



E&OE. Excel is a registered trade name of Mayflex Holdings Ltd.