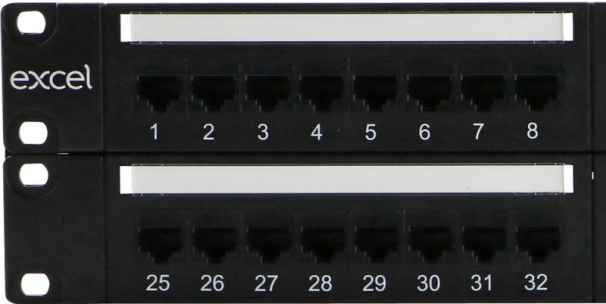


Excel Plus Cat6 48 Port Unscreened Patch Panel 2U LSA Punch Down Black

Item Code: 100-380



Category 6

Backward Compatible

Labelling Options

Power Sum Compliant

LSA Style Termination Blocks

25 Year system warranty

Product Overview

The Excel Plus Category 6 Unscreened Twisted Pair Patch Panels are available in 24 & 48 Port versions to accommodate installation requirements. Each panel consists of a number of 8 way blocks of RJ45 sockets, housed in a high quality plastic moulding. To the front of the panel this moulding contains the new easy to use slide label system.

Each block of 8 sockets has its own label which can be removed from either side of the covered label field. The label strip itself is protected by a clear, tough plastic insert. Termination can be made using LSA compatible tooling, cable tie bridges are positioned between the IDC blocks to relieve cable stress.

Installation can be further enhanced by use of the optional rear cable management tray which is attached quickly and easily to the panel without the need for fixings.

Product Specifications

| Feature | Values |
|---------------------------|-----------------------------|
| Number of ports – loaded | 48 |
| Type of connector | RJ45 8(8) |
| Shielded | no |
| Category | 6 |
| Connection type | LSA |
| Number of rack units (RU) | 1 |
| Colour | Black |
| Mounting method | 482.6 mm (19 inch) mounting |

Excel Plus Cat6 48 Port Unscreened Patch Panel 2U
LSA Punch Down Black

Item Code: 100-380



| | |
|--------|---------|
| Height | 88 mm |
| Width | 482 mm |
| Depth | 29.7 mm |

Additional specifications

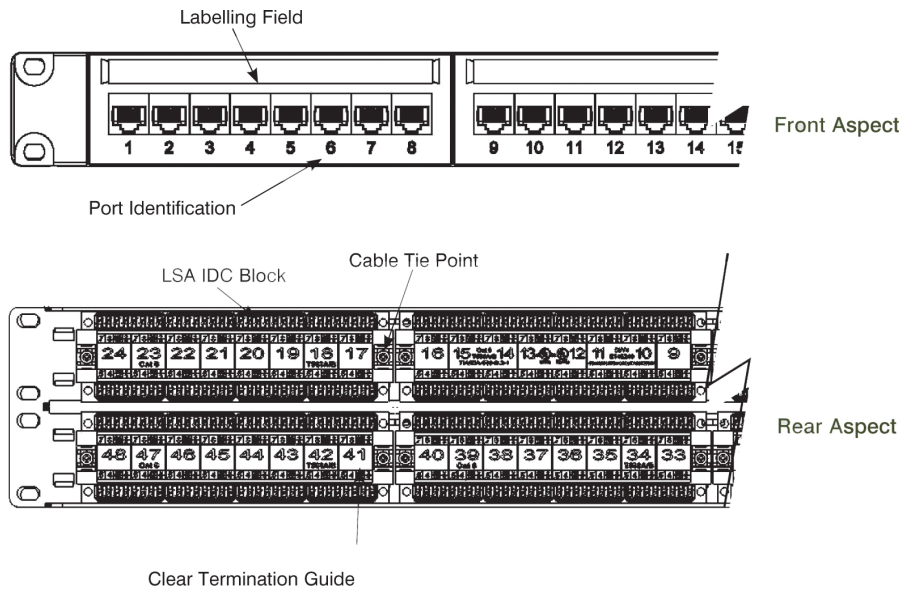
| Features | Values |
|----------------------------------|---|
| Wiring Specification | T568A/T568B |
| RJ45 Jack Min life expectancy | 750 insertions |
| RJ45 Jack contact | 50 microinch gold over 100 microinch nickel undercoat |
| IDC Contacts Max life expectancy | 200 terminations |
| Contact compatibility | 22 to 24 AWG |
| Operating Temperature Range | -10°C to 60°C |
| Storage Temperature Range | -40°C to 68°C |
| Relative Humidity | 10% to 90% |
| Panel material | SPCC |
| Frame material | ABS |
| Jack housing material | PBT, 30% glass fiber filled |
| IDC material | Phosphor bronze, tin over nickel undercoat |

Excel Plus Cat6 48 Port Unscreened Patch Panel 2U
LSA Punch Down Black

Item Code: 100-380



Product drawing



Standards

| Applicable standard | Detail |
|--|--|
| ISO/IEC 11801-1:2017 | Information technology - Generic cabling for customer premises: Part 1 General Requirements |
| IEC 61156-5:2009+AMD1:2012 CSV | Multicore and symmetrical pair/quad cables for digital communications - Part 5: Symmetrical pair/quad cables with transmission characteristics up to 1 000 MHz - Horizontal floor wiring - Sectional specification |
| EN 50173-1:2018 | Information technology. Generic cabling systems - General requirements |
| EN 50173-2:2007 + A1:2010 | Information technology. Generic cabling systems - Office premises |
| ANSI/TIA 568-2.D | Balanced Twisted-Pair Telecommunications Cabling and Components Standards |
| ANSI/EIA-310-E | Electronic Industries Association standard for horizontal spacing, vertical hole spacing, rack opening and front panel width |
| RoHS-II/-III (2011/65/EU & 2015/863): 2023 | Our products, demonstrate full adherence to the regulatory stipulations of the EU Directive 2011/65/EU (RoHS-II) and its corresponding delegated directive 2015/863 (RoHS-III). |
| WFD: 2023 | Compliant to Waste Framework Directive |
| SCIP: 2023 | Compliant - Does Not Contain Substances of Concern In |

Excel Plus Cat6 48 Port Unscreened Patch Panel 2U
LSA Punch Down Black

Item Code: 100-380



articles as such or in complex objects (Products)

POPs (EU) No 2019/1021

EU Regulation for the restriction of Persistent Organic
Pollutants.

Part Number Table

| Part Number | Description |
|-------------|--|
| 100-372 | Excel Plus Cat6 24 Port Unscreened Patch Panel 1U LSA Punch Down Black |
| 100-380 | Excel Plus Cat6 48 Port Unscreened Patch Panel 2U LSA Punch Down Black |

Excel is a world class premium performing end to end infrastructure solution designed,
Manufactured, supported and delivered without compromise.

Contact us at sales@excel-networking.com



E&OE. Excel is a registered trade name of Mayflex Holdings Ltd.