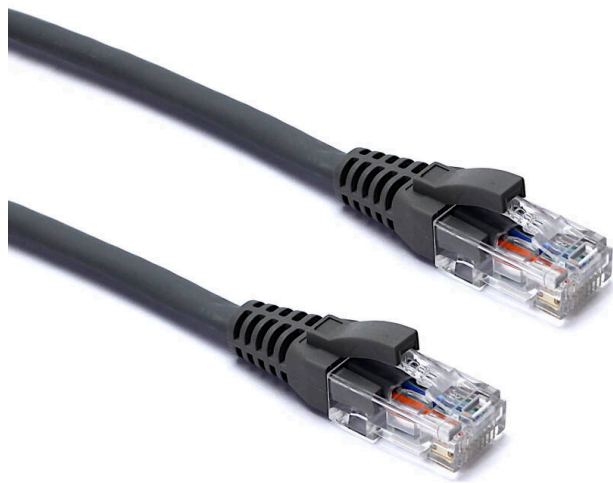


Excel Cat6 Patch Lead U/UTP Unshielded LSOH Blade Booted 0.5 m Grey (10-Pack)

Item Code: 100-395-10

excel
without compromise.



✕ Cat6 compliant

✕ Blade style "slimline" moulded strain relief boot with clip protector

✕ LSOH outer sheath

✕ Individually packaged

✕ "Stepped" RJ45 connector pins

✕ T568B wiring

✕ CIBSE TM65 Embodied Carbon: 1.226 kg CO2e

Product Overview

Excel Category 6 U/UTP patch leads are manufactured and tested to ISO 11801, EN 50173 & TIA/EIA 568 requirements for patch cord assemblies and provide optimum performance levels for structured cabling installations.

Product Specifications

Feature	Values
Cable type	U/UTP
Category	6
Length	0.5 m
Type of connector connection 1	RJ45 8(8)
Type of connector connection 2	RJ45 8(8)
Outer sheath colour	Grey
Strain relief boot	Moulded-on
Lockable	no
Strain relief boot colour	Grey
Flame retardant version	yes

Excel Cat6 Patch Lead U/UTP Unshielded LSOH Blade Booted 0.5 m Grey (10-Pack)

Item Code: 100-395-10

excel
without compromise.

Cable construction	1x4
AWG-size	24
Pin assignment	1:1

Product drawing



Standards

Applicable standard	Detail
ISO/IEC 11801-1:2017	Information technology - Generic cabling for customer premises: Part 1 General Requirements
EN 50173-1:2018	Information technology. Generic cabling systems - General requirements
ANSI/TIA 568-2.D	Balanced Twisted-Pair Telecommunications Cabling and Components Standards
IEC 61156-5:2009+AMD1:2012 CSV	Multicore and symmetrical pair/quad cables for digital communications - Part 5: Symmetrical pair/quad cables with transmission characteristics up to 1 000 MHz - Horizontal floor wiring - Sectional specification
IEC 60332-1-2:2004	Tests on electric and optical fibre cables under fire conditions. Test for vertical flame propagation for a single insulated wire or cable. Procedure for 1 kW pre-mixed flame
IEC 61034-2:2005+A1:2013	Measurement of smoke density of cables burning under defined conditions - Part 2: Test procedure and requirements

Excel Cat6 Patch Lead U/UTP Unshielded LSOH Blade Booted 0.5 m Grey (10-Pack)

Item Code: 100-395-10



RoHS-II/III (2011/65/EU & 2015/863): 2023

Our products, demonstrate full adherence to the regulatory stipulations of the EU Directive 2011/65/EU (RoHS-II) and its corresponding delegated directive 2015/863 (RoHS-III).

WFD: 2023

Compliant to Waste Framework Directive

SCIP: 2023

Compliant - Does Not Contain Substances of Concern In articles as such or in complex objects (Products)

POPs (EU) No 2019/1021

EU Regulation for the restriction of Persistent Organic Pollutants.

Part Number Table

Part Number	Description
100-395-10	Excel Cat6 Patch Lead U/UTP Unshielded LSOH Blade Booted 0.5 m Grey (10-Pack)
100-398	Excel Cat6 Patch Lead U/UTP Unshielded LSOH Blade Booted 15 m White
100-399	Excel Cat6 Patch Lead U/UTP Unshielded LSOH Blade Booted 20 m White
100-403-10	Excel Cat6 Patch Lead U/UTP Unshielded LSOH Blade Booted 0.3 m Grey (10-Pack)
100-403-BK-10	Excel Cat6 Patch Lead U/UTP Unshielded LSOH Blade Booted 0.3 m Black (10-Pack)
100-403-BU-10	Excel Cat6 Patch Lead U/UTP Unshielded LSOH Blade Booted 0.3 m Blue (10-Pack)
100-403-GN-10	Excel Cat6 Patch Lead U/UTP Unshielded LSOH Blade Booted 0.3 m Green (10-Pack)
100-403-OR-10	Excel Cat6 Patch Lead U/UTP Unshielded LSOH Blade Booted 0.3 m Orange (10-Pack)
100-403-PK-10	Excel Cat6 Patch Lead U/UTP Unshielded LSOH Blade Booted 0.3 m Pink (10-Pack)
100-403-RD-10	Excel Cat6 Patch Lead U/UTP Unshielded LSOH Blade Booted 0.3 m Red (10-Pack)
100-403-VT-10	Excel Cat6 Patch Lead U/UTP Unshielded LSOH Blade Booted 0.3 m Violet (10-Pack)
100-403-WT-10	Excel Cat6 Patch Lead U/UTP Unshielded LSOH Blade Booted 0.3 m White (10-Pack)
100-403-YW-10	Excel Cat6 Patch Lead U/UTP Unshielded LSOH Blade Booted 0.3 m Yellow (10-Pack)
100-406	Excel Cat6 Patch Lead U/UTP Unshielded LSOH Blade Booted 20 m Black
100-408	Excel Cat6 Patch Lead U/UTP Unshielded LSOH Blade Booted 15 m Black

Excel Cat6 Patch Lead U/UTP Unshielded LSOH Blade Booted 0.5 m Grey (10-Pack)

Item Code: 100-395-10



100-415-10	Excel Cat6 Patch Lead U/UTP Unshielded LSOH Blade Booted 0.5 m White (10-Pack)
100-456-10	Excel Cat6 Patch Lead F/UTP Shielded LSOH Blade Booted 0.5 m Grey (10-Pack)
100-481-10	Excel Cat6 Patch Lead U/UTP Unshielded LSOH Blade Booted 0.5 m Red (10-Pack)
100-482-10	Excel Cat6 Patch Lead U/UTP Unshielded LSOH Blade Booted 0.5 m Blue (10-Pack)
100-483-10	Excel Cat6 Patch Lead U/UTP Unshielded LSOH Blade Booted 0.5 m Black (10-Pack)
100-484-10	Excel Cat6 Patch Lead U/UTP Unshielded LSOH Blade Booted 0.5 m Green (10-Pack)
100-485-10	Excel Cat6 Patch Lead U/UTP Unshielded LSOH Blade Booted 0.5 m Yellow (10-Pack)
100-486-10	Excel Cat6 Patch Lead U/UTP Unshielded LSOH Blade Booted 0.5 m Violet (10-Pack)
100-487-10	Excel Cat6 Patch Lead U/UTP Unshielded LSOH Blade Booted 0.5 m Orange (10-Pack)
100-488-10	Excel Cat6 Patch Lead U/UTP Unshielded LSOH Blade Booted 0.5 m Pink (10-Pack)
100-585	Excel Cat6 Patch Lead U/UTP Unshielded LSOH Blade Booted 7 m Pink

Excel is a world class premium performing end to end infrastructure solution designed, Manufactured, supported and delivered without compromise.

Contact us at sales@excel-networking.com



E&OE. Excel is a registered trade name of Mayflex Holdings Ltd.