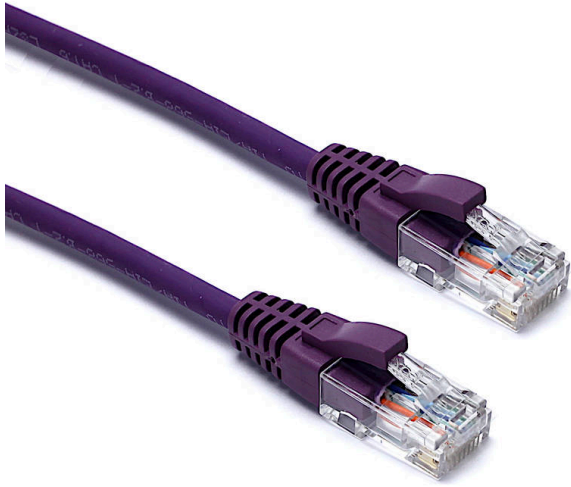


# Excel Cat6 Patch Lead U/UTP Unshielded LSOH Blade Booted 7 m Violet

Item Code: 100-396

**excel**  
without compromise.



✕ Cat6 compliant

✕ Blade style "slimline" moulded strain relief boot with clip protector

✕ LSOH outer sheath

✕ Individually packaged

✕ "Stepped" RJ45 connector pins

✕ T568B wiring

✕ CIBSE TM65 Embodied Carbon: 1.163 kg CO2e

## Product Overview

Excel Category 6 U/UTP patch leads are manufactured and tested to ISO 11801, EN 50173 & TIA/EIA 568 requirements for patch cord assemblies and provide optimum performance levels for structured cabling installations.

## Product Specifications

Feature	Values
Cable type	U/UTP
Category	6
Length	7 m
Type of connector connection 1	RJ45 8(8)
Type of connector connection 2	RJ45 8(8)
Outer sheath colour	Violet
Strain relief boot	Moulded-on
Lockable	no
Strain relief boot colour	Violet
Flame retardant version	yes

# Excel Cat6 Patch Lead U/UTP Unshielded LSOH Blade Booted 7 m Violet

Item Code: 100-396



Cable construction	1x4
AWG-size	24
Pin assignment	1:1

## Part Number Table

Part Number	Description
100-396	Excel Cat6 Patch Lead U/UTP LSOH Blade 7 m Violet

Excel is a world class premium performing end to end infrastructure solution designed, Manufactured, supported and delivered without compromise.

Contact us at [sales@excel-networking.com](mailto:sales@excel-networking.com)



E&OE. Excel is a registered trade name of Mayflex Holdings Ltd.