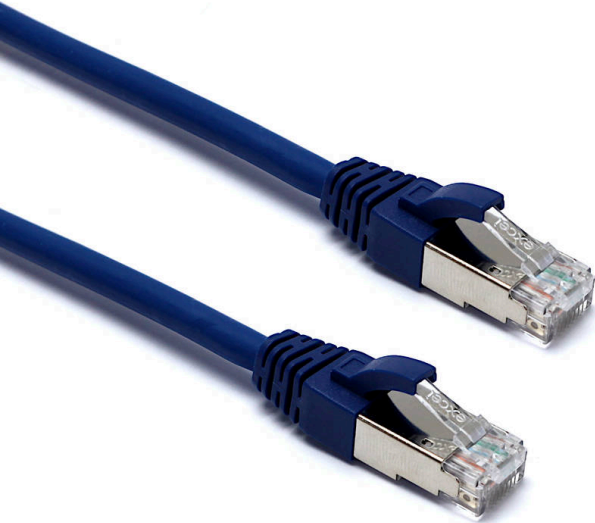


Excel Cat6 Patch Lead F/UTP Shielded LSOH Blade  
Booted 3 m Blue

Item Code: 100-445



- ✕ Cat6 compliant
- ✕ Foil tape screen
- ✕ Backward compatible
- ✕ Independently verified
- ✕ Choice of colours
- ✕ T568B wiring
- ✕ Blade style 'slimline' moulded strain relief boot with clip protector

Product Overview

Excel Category 6 F/UTP patch leads are manufactured and tested to ISO 11801, EN 50173 & TIA/EIA 568 requirements for patch cord assemblies and provide optimum performance levels for structured cabling installations.

Product Specifications

Feature	Values
Cable type	F/UTP
Category	6
Length	3 m
Type of connector connection 1	RJ45 8(8)
Type of connector connection 2	RJ45 8(8)
Outer sheath colour	Blue
Strain relief boot	Moulded-on
Lockable	no
Strain relief boot colour	Blue
Flame retardant version	yes

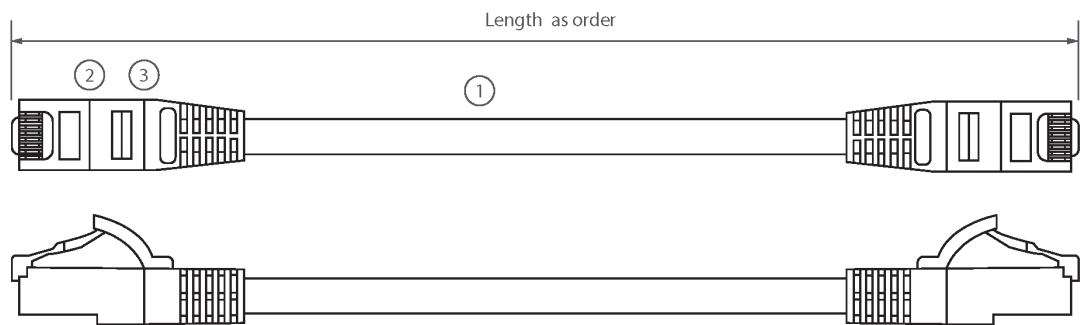
# Excel Cat6 Patch Lead F/UTP Shielded LSOH Blade Booted 3 m Blue



Item Code: 100-445

Cable construction	1x4
AWG-size	26
Pin assignment	1:1

### Product drawing



- ① 4 pair individually foil screen LSOH cable
- ② RJ45 connector with 50µm gold plated staggered pins
- ③ Slimline blade style strain relief boot

### Additional specifications

Features	Values
Installation temperature	-20°C to +75°C
Operating temperature	+5°C to +75°C
Storage temperature	-20°C to +75°C

### Standards

Applicable standard	Detail
ISO/IEC 11801-1:2017	Information technology - Generic cabling for customer premises: Part 1 General Requirements
EN 50173-1:2018	Information technology. Generic cabling systems - General requirements
ANSI/TIA 568-2.D	Balanced Twisted-Pair Telecommunications Cabling and

# Excel Cat6 Patch Lead F/UTP Shielded LSOH Blade Booted 3 m Blue

Item Code: 100-445



## Components Standards

IEC 61156-5:2009+AMD1:2012 CSV	Multicore and symmetrical pair/quad cables for digital communications - Part 5: Symmetrical pair/quad cables with transmission characteristics up to 1 000 MHz - Horizontal floor wiring - Sectional specification
IEC 60332-1-2:2004	Tests on electric and optical fibre cables under fire conditions. Test for vertical flame propagation for a single insulated wire or cable. Procedure for 1 kW pre-mixed flame
IEC 61034-2:2005+A1:2013	Measurement of smoke density of cables burning under defined conditions - Part 2: Test procedure and requirements
RoHS-II/-III (2011/65/EU & 2015/863): 2023	Our products, demonstrate full adherence to the regulatory stipulations of the EU Directive 2011/65/EU (RoHS-II) and its corresponding delegated directive 2015/863 (RoHS-III).
WFD: 2023	Compliant to Waste Framework Directive
SCIP: 2023	Compliant - Does Not Contain Substances of Concern In articles as such or in complex objects (Products)
POPs (EU) No 2019/1021	EU Regulation for the restriction of Persistent Organic Pollutants.

## Part Number Table

Part Number	Description
100-435	Excel Cat6 Patch Lead F/UTP Shielded LSOH Blade Booted 1 m Grey
100-436	Excel Cat6 Patch Lead F/UTP Shielded LSOH Blade Booted 3 m Grey
100-437	Excel Cat6 Patch Lead F/UTP Shielded LSOH Blade Booted 5 m Grey
100-438	Excel Cat6 Patch Lead F/UTP Shielded LSOH Blade Booted 1 m Red
100-439	Excel Cat6 Patch Lead F/UTP Shielded LSOH Blade Booted 3 m Red
100-440	Excel Cat6 Patch Lead F/UTP Shielded LSOH Blade Booted 5 m Red
100-441	Excel Cat6 Patch Lead F/UTP Shielded LSOH Blade Booted 1 m Green
100-442	Excel Cat6 Patch Lead F/UTP Shielded LSOH Blade Booted 3 m Green
100-443	Excel Cat6 Patch Lead F/UTP Shielded LSOH Blade Booted 5 m Green
100-444	Excel Cat6 Patch Lead F/UTP Shielded LSOH Blade Booted 1 m Blue
100-445	Excel Cat6 Patch Lead F/UTP Shielded LSOH Blade Booted 3 m Blue
100-446	Excel Cat6 Patch Lead F/UTP Shielded LSOH Blade Booted 5 m Blue
100-447	Excel Cat6 Patch Lead F/UTP Shielded LSOH Blade Booted 1 m Yellow

Excel Cat6 Patch Lead F/UTP Shielded LSOH Blade Booted 3 m Blue

Item Code: 100-445



100-448	Excel Cat6 Patch Lead F/UTP Shielded LSOH Blade Booted 3 m Yellow
100-449	Excel Cat6 Patch Lead F/UTP Shielded LSOH Blade Booted 5 m Yellow
100-456	Excel Cat6 Patch Lead F/UTP Shielded LSOH Blade Booted 0.5 m Grey
100-457	Excel Cat6 Patch Lead F/UTP Shielded LSOH Blade Booted 2 m Grey
100-458	Excel Cat6 Patch Lead F/UTP Shielded LSOH Blade Booted 7 m Grey
100-459	Excel Cat6 Patch Lead F/UTP Shielded LSOH Blade Booted 10 m Grey

Excel is a world class premium performing end to end infrastructure solution designed, Manufactured, supported and delivered without compromise.

Contact us at [sales@excel-networking.com](mailto:sales@excel-networking.com)



E&OE. Excel is a registered trade name of Mayflex Holdings Ltd.