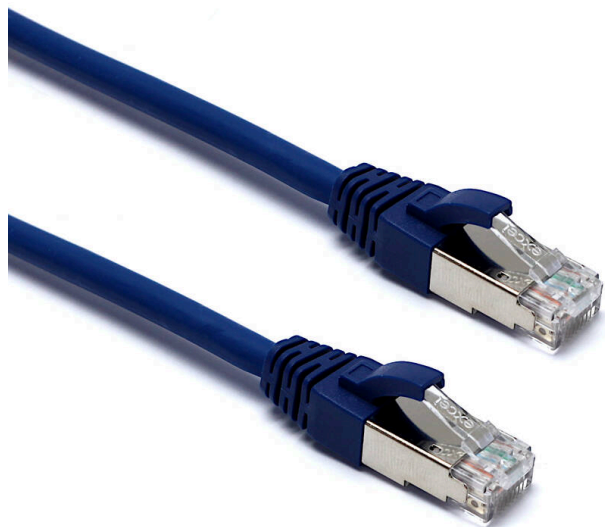


Excel Cat6 Patch Lead F/UTP Shielded LSOH Blade Booted 5 m Blue

Item Code: 100-446

excel
without compromise.



✕ Cat6 compliant

✕ Foil tape screen

✕ Backward compatible

✕ Independently verified

✕ LSOH outer sheath

✕ Individually packaged

Product Overview

Excel Category 6 F/UTP patch leads are manufactured and tested to ISO 11801, EN 50173 & TIA/EIA 568 requirements for patch cord assemblies and provide optimum performance levels for structured cabling installations.

Product Specifications

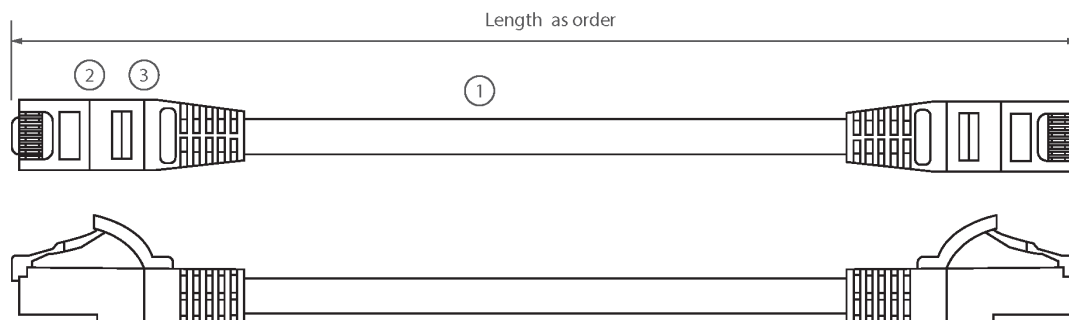
| Feature | Values |
|--------------------------------|------------|
| Cable type | F/UTP |
| Category | 6 |
| Length | 5 m |
| Type of connector connection 1 | RJ45 8(8) |
| Type of connector connection 2 | RJ45 8(8) |
| Outer sheath colour | Blue |
| Strain relief boot | Moulded-on |
| Lockable | no |
| Strain relief boot colour | Blue |
| Flame retardant version | yes |
| Cable construction | 1x4 |
| AWG-size | 26 |
| Pin assignment | 1:1 |

Excel Cat6 Patch Lead F/UTP Shielded LSOH Blade Booted 5 m Blue

Item Code: 100-446



Product drawing



- ① 4 pair individually foil screen LSOH cable
- ② RJ45 connector with 50µm gold plated staggered pins
- ③ Slimline blade style strain relief boot

Additional specifications

| Features | Values |
|--------------------------|----------------|
| Installation temperature | -20°C to +75°C |
| Operating temperature | +5°C to +75°C |
| Storage temperature | -20°C to +75°C |

Standards

| Applicable standard | Detail |
|--------------------------------|--|
| ISO/IEC 11801-1:2017 | Information technology - Generic cabling for customer premises: Part 1 General Requirements |
| EN 50173-1:2018 | Information technology. Generic cabling systems - General requirements |
| ANSI/TIA 568-2.D | Balanced Twisted-Pair Telecommunications Cabling and Components Standards |
| IEC 61156-5:2009+AMD1:2012 CSV | Multicore and symmetrical pair/quad cables for digital communications - Part 5: Symmetrical pair/quad cables with transmission characteristics up to 1 000 MHz - Horizontal floor wiring - Sectional specification |

Excel Cat6 Patch Lead F/UTP Shielded LSOH Blade Booted 5 m Blue

Item Code: 100-446



| | |
|--|---|
| IEC 60332-1-2:2004 | Tests on electric and optical fibre cables under fire conditions. Test for vertical flame propagation for a single insulated wire or cable. Procedure for 1 kW pre-mixed flame |
| IEC 61034-2:2005+A1:2013 | Measurement of smoke density of cables burning under defined conditions – Part 2: Test procedure and requirements |
| RoHS-II/-III (2011/65/EU & 2015/863): 2023 | Our products, demonstrate full adherence to the regulatory stipulations of the EU Directive 2011/65/EU (RoHS-II) and its corresponding delegated directive 2015/863 (RoHS-III). |
| WFD: 2023 | Compliant to Waste Framework Directive |
| SCIP: 2023 | Compliant - Does Not Contain Substances of Concern In articles as such or in complex objects (Products) |
| POPs (EU) No 2019/1021 | EU Regulation for the restriction of Persistent Organic Pollutants. |

Part Number Table

| Part Number | Description |
|-------------|---|
| 100-435 | Excel Cat6 Patch Lead F/UTP Shielded LSOH Blade Booted 1 m Grey |
| 100-436 | Excel Cat6 Patch Lead F/UTP Shielded LSOH Blade Booted 3 m Grey |
| 100-437 | Excel Cat6 Patch Lead F/UTP Shielded LSOH Blade Booted 5 m Grey |
| 100-438 | Excel Cat6 Patch Lead F/UTP Shielded LSOH Blade Booted 1 m Red |
| 100-439 | Excel Cat6 Patch Lead F/UTP Shielded LSOH Blade Booted 3 m Red |
| 100-440 | Excel Cat6 Patch Lead F/UTP Shielded LSOH Blade Booted 5 m Red |
| 100-441 | Excel Cat6 Patch Lead F/UTP Shielded LSOH Blade Booted 1 m Green |
| 100-442 | Excel Cat6 Patch Lead F/UTP Shielded LSOH Blade Booted 3 m Green |
| 100-443 | Excel Cat6 Patch Lead F/UTP Shielded LSOH Blade Booted 5 m Green |
| 100-444 | Excel Cat6 Patch Lead F/UTP Shielded LSOH Blade Booted 1 m Blue |
| 100-445 | Excel Cat6 Patch Lead F/UTP Shielded LSOH Blade Booted 3 m Blue |
| 100-446 | Excel Cat6 Patch Lead F/UTP Shielded LSOH Blade Booted 5 m Blue |
| 100-447 | Excel Cat6 Patch Lead F/UTP Shielded LSOH Blade Booted 1 m Yellow |
| 100-448 | Excel Cat6 Patch Lead F/UTP Shielded LSOH Blade Booted 3 m Yellow |
| 100-449 | Excel Cat6 Patch Lead F/UTP Shielded LSOH Blade Booted 5 m Yellow |
| 100-456 | Excel Cat6 Patch Lead F/UTP Shielded LSOH Blade Booted 0.5 m Grey |

Excel Cat6 Patch Lead F/UTP Shielded LSOH Blade Booted 5 m Blue

Item Code: 100-446



| | |
|---------|--|
| 100-457 | Excel Cat6 Patch Lead F/UTP Shielded LSOH Blade Booted 2 m Grey |
| 100-458 | Excel Cat6 Patch Lead F/UTP Shielded LSOH Blade Booted 7 m Grey |
| 100-459 | Excel Cat6 Patch Lead F/UTP Shielded LSOH Blade Booted 10 m Grey |

Excel is a world class premium performing end to end infrastructure solution designed, Manufactured, supported and delivered without compromise.

Contact us at sales@excel-networking.com



E&OE. Excel is a registered trade name of Mayflex Holdings Ltd.