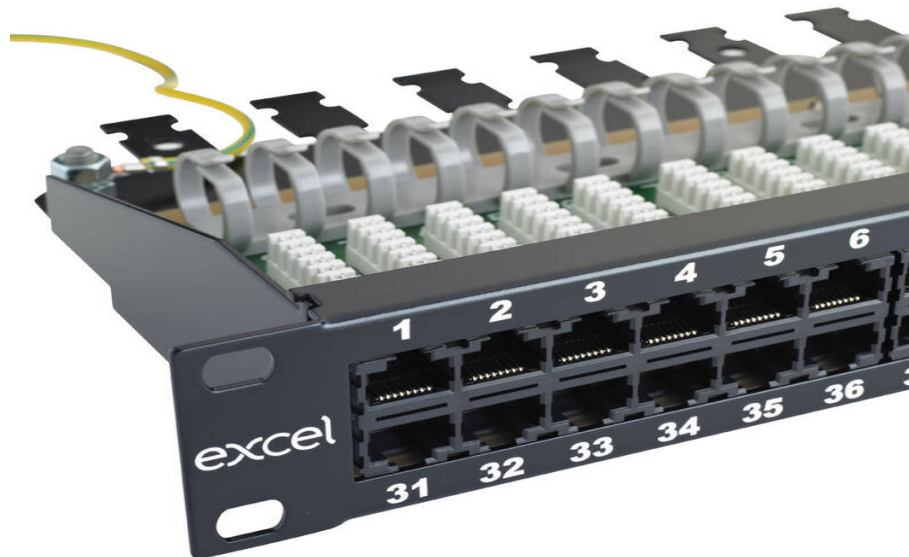


# Excel Voice 25 Port 3-Pair RJ45 Patch Panel 1U Black

Part Code: 100-465

sales@excel-networking.com  
excel-networking.com

CIBSE TM65 Embodied Carbon: 31.110 kg CO2e



## Main Features

- / High port density design
- / Built in rear cable management tray
- / 25 Year system warranty
- / LSA compatible IDC blocks
- / Up to 60 x RJ45 ports in 1U of rack space
- / CIBSE TM65 Embodied Carbon: 31.110 kg CO2e

## Product Overview

The Excel high density RJ45 patch panel is designed specifically for use with high pair count voice multipair cables, such as the Category 3 or CW1308 products found within the Excel cable range.

A standard 1U panel frame is populated with up to 60 ports? 50 and 25 port options are also available. Each style of panel has an integral rear cable management tray positioned at a right angle to the panel front. As well as providing a stress free area in which to dress the multiple pairs, the tray also houses the LSA compatible termination blocks which accept 22 to 26 AWG cable.

The 25 and 50 Port Patch Panels support 3 pair connectivity per port and the 60 Port Patch Panels supports 2 pair connectivity. Although two pair circuits are most common, allowing for 100 pair links to be terminated across a standard 50 port 1U panel.

# Excel Voice 25 Port 3-Pair RJ45 Patch Panel 1U Black

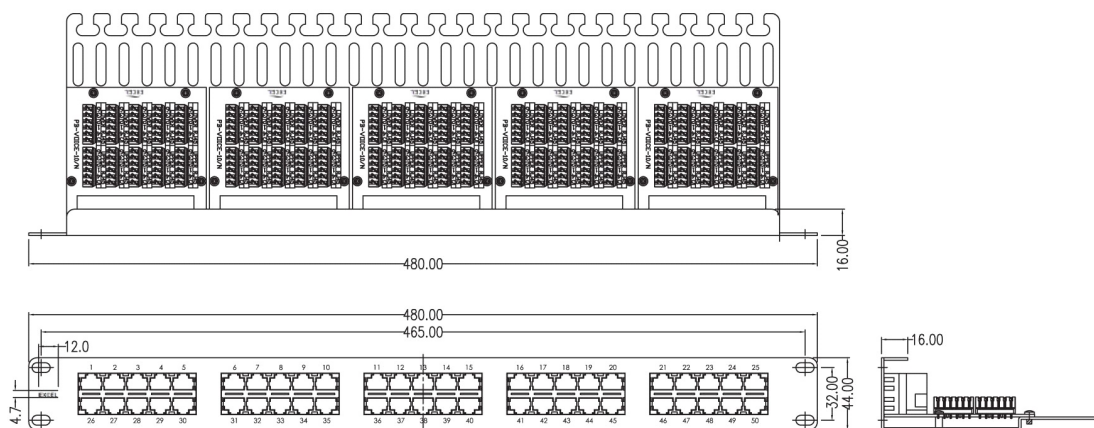
Part Code: 100-465

sales@excel-networking.com  
excel-networking.com

## Product Specifications

Feature	Values
Number of ports – loaded	25
Type of connector	RJ45 8(8)
Shielded	no
Category	Voice
Connection type	LSA
Number of rack units (RU)	1
Colour	Black
Mounting method	482.6 mm (19 inch) mounting
Height	44 mm
Width	480 mm

## Product drawing



# Excel Voice 25 Port 3-Pair RJ45 Patch Panel 1U Black

Part Code: 100-465

sales@excel-networking.com  
excel-networking.com

## Standards

Applicable standard	Detail
Directive 2011/65/EU (RoHS II)	Restriction of the Use of Certain Hazardous Substances in Electrical and Electronic Equipment — compliant. Applies within EU member states).
Directive (EU) 2015/863 (RoHS III)	Amending Directive 2011/65/EU to add four phthalates (DEHP, BBP, DBP, DIBP) to Annex II — compliant.
Directive 2008/98/EC (WFD)	Waste Framework Directive — compliant. Implemented in the UK through the Waste (England and Wales) Regulations 2011 (SI 2011 No. 988).
ECHA SCIP Database	Compliant; product does not contain SVHCs (Substances of Very High Concern) as defined under REACH Article 33(1). Submission obligations met under EU REACH and UK REACH.
Regulation (EU) 2019/1021 (POPs)	EU Regulation on Persistent Organic Pollutants — compliant. For Great Britain, compliance is aligned with the Persistent Organic Pollutants (Amendment) (EU Exit) Regulations 2020 (SI 2020 No. 1355).
UK SI 2012 No. 3032	The Restriction of the Use of Certain Hazardous Substances in Electrical and Electronic Equipment Regulations 2012 (UK RoHS) — compliant for Great Britain. Retained EU law, as amended by the Product Safety and Metrology (Amendment etc.) (EU Exit) Regulations 2019.

## Part Code Table

Part Code	Description
100-463	<b>Excel Voice 60 Port 2-Pair RJ45 Patch Panel 1U Black</b>
100-464	<b>Excel Voice 50 Port 3-Pair RJ45 Patch Panel 1U Black</b>
100-465	<b>Excel Voice 25 Port 3-Pair RJ45 Patch Panel 1U Black</b>

# Excel Voice 25 Port 3-Pair RJ45 Patch Panel 1U Black



Part Code: 100-465

sales@excel-networking.com  
excel-networking.com

