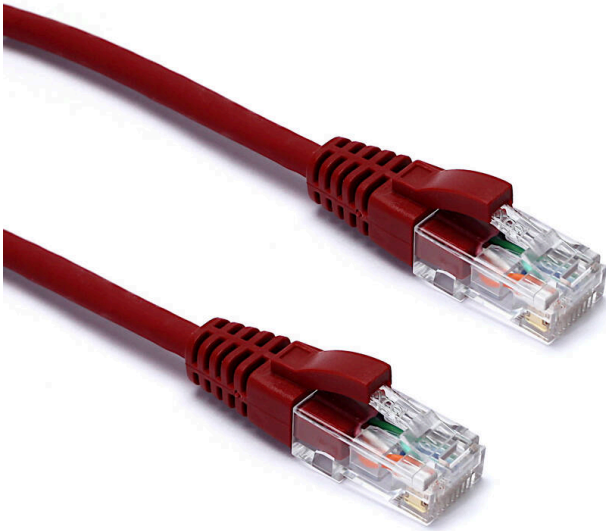


Excel Cat6 Patch Lead U/UTP Unshielded LSOH Blade Booted 0.5 m Red (10-Pack)

Item Code: 100-481-10

excel
without compromise.



Cat6 compliant

Blade style "slimline" moulded strain relief boot with clip protector

LSOH outer sheath

Individually packaged

"Stepped" RJ45 connector pins

T568B wiring

CIBSE TM65 Embodied Carbon: 1.226 kg CO2e

Product Overview

Excel Category 6 U/UTP patch leads are manufactured and tested to ISO 11801, EN 50173 & TIA/EIA 568 requirements for patch cord assemblies and provide optimum performance levels for structured cabling installations.

Product Specifications

Feature	Values
Cable type	U/UTP
Category	6
Length	0.5 m
Type of connector connection 1	RJ45 8(8)
Type of connector connection 2	RJ45 8(8)
Outer sheath colour	Red
Strain relief boot	Moulded-on
Lockable	no
Strain relief boot colour	Red

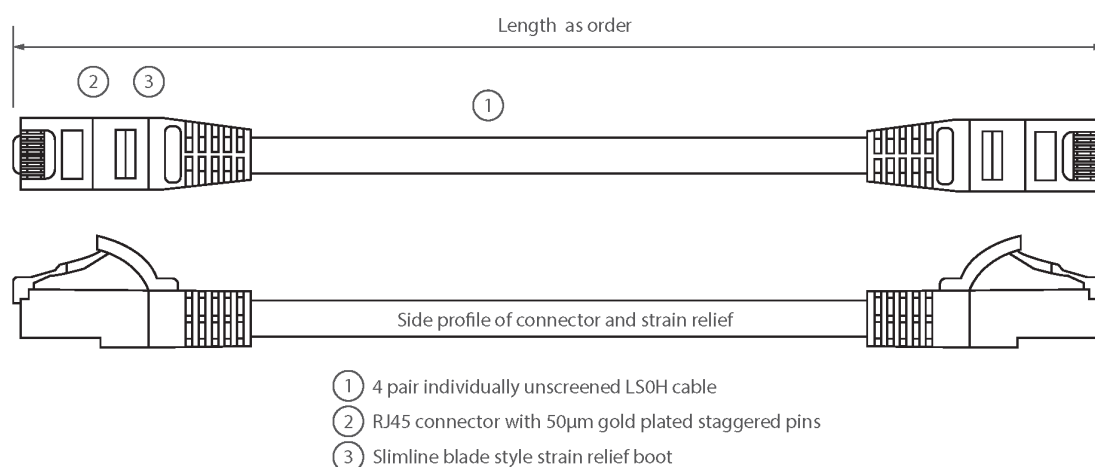
Excel Cat6 Patch Lead U/UTP Unshielded LSOH Blade Booted 0.5 m Red (10-Pack)

Item Code: 100-481-10

excel
without compromise.

Flame retardant version	yes
Cable construction	1x4
AWG-size	24
Pin assignment	1:1

Product drawing



Standards

Applicable standard	Detail
ISO/IEC 11801-1:2017	Information technology - Generic cabling for customer premises: Part 1 General Requirements
EN 50173-1:2018	Information technology. Generic cabling systems - General requirements
ANSI/TIA 568-2.D	Balanced Twisted-Pair Telecommunications Cabling and Components Standards
IEC 61156-5:2009+AMD1:2012 CSV	Multicore and symmetrical pair/quad cables for digital communications - Part 5: Symmetrical pair/quad cables with transmission characteristics up to 1 000 MHz - Horizontal floor wiring - Sectional specification
IEC 60332-1-2:2004	Tests on electric and optical fibre cables under fire conditions. Test for vertical flame propagation for a single insulated wire or cable. Procedure for 1 kW pre-mixed flame
IEC 61034-2:2005+A1:2013	Measurement of smoke density of cables burning under

Excel Cat6 Patch Lead U/UTP Unshielded LSOH Blade Booted 0.5 m Red (10-Pack)

Item Code: 100-481-10



	defined conditions - Part 2: Test procedure and requirements
Directive 2011/65/EU (RoHS II)	Restriction of the Use of Certain Hazardous Substances in Electrical and Electronic Equipment — compliant. Applies within EU member states).
Directive (EU) 2015/863 (RoHS III)	Amending Directive 2011/65/EU to add four phthalates (DEHP, BBP, DBP, DIBP) to Annex II — compliant.
Directive 2008/98/EC (WFD)	Waste Framework Directive — compliant. Implemented in the UK through the Waste (England and Wales) Regulations 2011 (SI 2011 No. 988).
ECHA SCIP Database	Compliant; product does not contain SVHCs (Substances of Very High Concern) as defined under REACH Article 33(1). Submission obligations met under EU REACH and UK REACH.
Regulation (EU) 2019/1021 (POPs)	EU Regulation on Persistent Organic Pollutants — compliant. For Great Britain, compliance is aligned with the Persistent Organic Pollutants (Amendment) (EU Exit) Regulations 2020 (SI 2020 No. 1355).
UK SI 2012 No. 3032	The Restriction of the Use of Certain Hazardous Substances in Electrical and Electronic Equipment Regulations 2012 (UK RoHS) — compliant for Great Britain. Retained EU law, as amended by the Product Safety and Metrology (Amendment etc.) (EU Exit) Regulations 2019.

Part Number Table

Part Number	Description
100-395-10	Excel Cat6 Patch Lead U/UTP Unshielded LSOH Blade Booted 0.5 m Grey (10-Pack)
100-398	Excel Cat6 Patch Lead U/UTP Unshielded LSOH Blade Booted 15 m White
100-399	Excel Cat6 Patch Lead U/UTP Unshielded LSOH Blade Booted 20 m White
100-403-10	Excel Cat6 Patch Lead U/UTP Unshielded LSOH Blade Booted 0.3 m Grey (10-Pack)
100-403-BK-10	Excel Cat6 Patch Lead U/UTP Unshielded LSOH Blade Booted 0.3 m Black (10-Pack)
100-403-BU-10	Excel Cat6 Patch Lead U/UTP Unshielded LSOH Blade Booted 0.3 m Blue (10-Pack)
100-403-GN-10	Excel Cat6 Patch Lead U/UTP Unshielded LSOH Blade Booted 0.3 m Green (10-Pack)
100-403-OR-10	Excel Cat6 Patch Lead U/UTP Unshielded LSOH Blade Booted 0.3 m Orange (10-Pack)

Excel Cat6 Patch Lead U/UTP Unshielded LSOH Blade Booted 0.5 m Red (10-Pack)

Item Code: 100-481-10



100-403-PK-10	Excel Cat6 Patch Lead U/UTP Unshielded LSOH Blade Booted 0.3 m Pink (10-Pack)
100-403-RD-10	Excel Cat6 Patch Lead U/UTP Unshielded LSOH Blade Booted 0.3 m Red (10-Pack)
100-403-VT-10	Excel Cat6 Patch Lead U/UTP Unshielded LSOH Blade Booted 0.3 m Violet (10-Pack)
100-403-WT-10	Excel Cat6 Patch Lead U/UTP Unshielded LSOH Blade Booted 0.3 m White (10-Pack)
100-403-YW-10	Excel Cat6 Patch Lead U/UTP Unshielded LSOH Blade Booted 0.3 m Yellow (10-Pack)
100-406	Excel Cat6 Patch Lead U/UTP Unshielded LSOH Blade Booted 20 m Black
100-408	Excel Cat6 Patch Lead U/UTP Unshielded LSOH Blade Booted 15 m Black
100-415-10	Excel Cat6 Patch Lead U/UTP Unshielded LSOH Blade Booted 0.5 m White (10-Pack)
100-456-10	Excel Cat6 Patch Lead F/UTP Shielded LSOH Blade Booted 0.5 m Grey (10-Pack)
100-481-10	Excel Cat6 Patch Lead U/UTP Unshielded LSOH Blade Booted 0.5 m Red (10-Pack)
100-482-10	Excel Cat6 Patch Lead U/UTP Unshielded LSOH Blade Booted 0.5 m Blue (10-Pack)
100-483-10	Excel Cat6 Patch Lead U/UTP Unshielded LSOH Blade Booted 0.5 m Black (10-Pack)
100-484-10	Excel Cat6 Patch Lead U/UTP Unshielded LSOH Blade Booted 0.5 m Green (10-Pack)
100-485-10	Excel Cat6 Patch Lead U/UTP Unshielded LSOH Blade Booted 0.5 m Yellow (10-Pack)
100-486-10	Excel Cat6 Patch Lead U/UTP Unshielded LSOH Blade Booted 0.5 m Violet (10-Pack)
100-487-10	Excel Cat6 Patch Lead U/UTP Unshielded LSOH Blade Booted 0.5 m Orange (10-Pack)
100-488-10	Excel Cat6 Patch Lead U/UTP Unshielded LSOH Blade Booted 0.5 m Pink (10-Pack)
100-585	Excel Cat6 Patch Lead U/UTP Unshielded LSOH Blade Booted 7 m Pink

Excel is a world class premium performing end to end infrastructure solution designed, Manufactured, supported and delivered without compromise.

Contact us at sales@excel-networking.com



E&OE. Excel is a registered trade name of Mayflex Holdings Ltd.