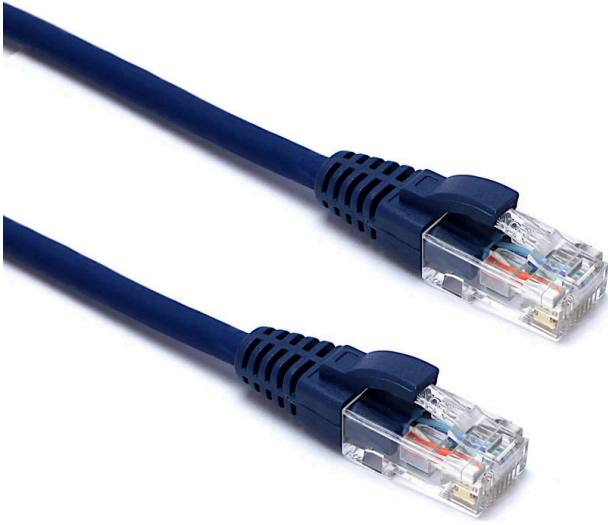


Excel Cat6 Patch Lead U/UTP Unshielded LSOH Blade Booted 0.5 m Blue (10-Pack)

Item Code: 100-482-10

excel
without compromise.



✘ Cat6 compliant

✘ Blade style "slimline" moulded strain relief boot with clip protector

✘ LSOH outer sheath

✘ Individually packaged

✘ "Stepped" RJ45 connector pins

✘ T568B wiring

✘ CIBSE TM65 Embodied Carbon: 1.226 kg CO2e

Product Overview

Excel Category 6 U/UTP patch leads are manufactured and tested to ISO 11801, EN 50173 & TIA/EIA 568 requirements for patch cord assemblies and provide optimum performance levels for structured cabling installations.

Product Specifications

Feature	Values
Cable type	U/UTP
Category	6
Length	0.5 m
Type of connector connection 1	RJ45 8(8)
Type of connector connection 2	RJ45 8(8)
Outer sheath colour	Blue
Strain relief boot	Moulded-on
Lockable	no
Strain relief boot colour	Blue
Flame retardant version	yes

Excel Cat6 Patch Lead U/UTP Unshielded LSOH Blade Booted 0.5 m Blue (10-Pack)

Item Code: 100-482-10



Cable construction	1x4
AWG-size	24
Pin assignment	1:1

Part Number Table

Part Number	Description
100-482-10	Excel Cat6 P/Lead U/UTP LSOH Blade 0.5 m Blue PK10

Excel is a world class premium performing end to end infrastructure solution designed, Manufactured, supported and delivered without compromise.

Contact us at sales@excel-networking.com



E&OE. Excel is a registered trade name of Mayflex Holdings Ltd.