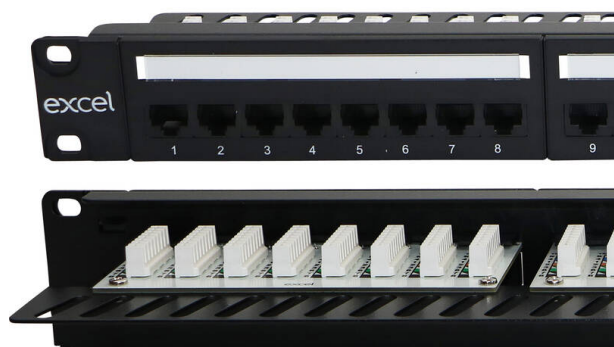


Excel Plus Cat5e 24 Port Unscreened Patch Panel Right-Angled 1U LSA Punch Down Black

Item Code: 100-490

excel
without compromise.



Choice of port density

Supports Gigabit Ethernet

Cage nuts and mini cable ties included

LSA Style Termination Blocks

T568A/B Wiring Configuration

Product Overview

Excel Plus Category 5e Patch Panels comply with the current standards for enhanced Category 5.

Each panel consists of a number of 8 way blocks of RJ45 sockets, housed in a high quality plastic moulding. To the front of the panel this moulding contains the new easy to use slide label system. Each block of 8 sockets has its own label which can be removed from either side of the covered label field. The label strip itself is protected by a clear, tough plastic insert.

To make installation as easy and fast as possible, the LSA compatible termination blocks are positioned at a right angle to the panel front on the built in rear cable management tray.

Product Specifications

Feature	Values
Number of ports - loaded	24
Type of connector	RJ45 8(8)
Shielded	no
Category	5E
Connection type	LSA
Number of rack units (RU)	1
Colour	Black
Mounting method	482.6 mm (19 inch) mounting
Height	44 mm
Width	480 mm

Excel Plus Cat5e 24 Port Unscreened Patch Panel Right-Angled 1U LSA Punch Down Black

Item Code: 100-490



Depth

96 mm

Standards

Applicable standard	Detail
Directive 2011/65/EU (RoHS II)	Restriction of the Use of Certain Hazardous Substances in Electrical and Electronic Equipment — compliant. Applies within EU member states).
Directive (EU) 2015/863 (RoHS III)	Amending Directive 2011/65/EU to add four phthalates (DEHP, BBP, DBP, DIBP) to Annex II — compliant.
Directive 2008/98/EC (WFD)	Waste Framework Directive — compliant. Implemented in the UK through the Waste (England and Wales) Regulations 2011 (SI 2011 No. 988).
ECHA SCIP Database	Compliant; product does not contain SVHCs (Substances of Very High Concern) as defined under REACH Article 33(1). Submission obligations met under EU REACH and UK REACH.
Regulation (EU) 2019/1021 (POPs)	EU Regulation on Persistent Organic Pollutants — compliant. For Great Britain, compliance is aligned with the Persistent Organic Pollutants (Amendment) (EU Exit) Regulations 2020 (SI 2020 No. 1355).
UK SI 2012 No. 3032	The Restriction of the Use of Certain Hazardous Substances in Electrical and Electronic Equipment Regulations 2012 (UK RoHS) — compliant for Great Britain. Retained EU law, as amended by the Product Safety and Metrology (Amendment etc.) (EU Exit) Regulations 2019.

Part Number Table

Part Number	Description
100-490	Excel Plus Cat5e 24 Port Unscreened Patch Panel Right-Angled 1U LSA Punch Down Black

Excel is a world class premium performing end to end infrastructure solution designed, Manufactured, supported and delivered without compromise.

Contact us at sales@excel-networking.com



E&OE. Excel is a registered trade name of Mayflex Holdings Ltd.