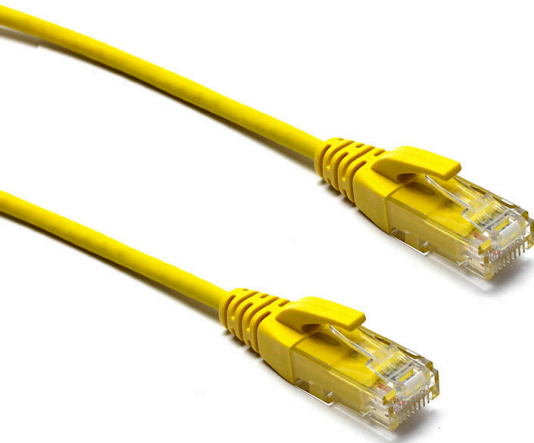


Excel Cat6 Mini Patch Lead 28AWG U/UTP
Unshielded LSOH Blade Booted 0.5 m Yellow
Item Code: 100-527



✕ Suitable for high density switches and panels

✕ Reduced outside diameter: 3.8 mm OD

✕ Category 6

✕ Backward compatible

✕ Independently verified

✕ Choice of colours

✕ T568B wiring

Product Overview

Excel Category 6 U/UTP Mini patch leads are manufactured and tested to ISO 11801, EN 50173 & TIA/EIA 568-C-2 requirements for patch cord assemblies and provide optimum performance levels for structured cabling installations.

Each cable has a low smoke zero halogen outer sheath as standard and the small 3.8 mm outside diameter makes them ideal for data centre and high density environments where there are high density patching fields and blade server/switch chassis deployments, allowing for maximum use of valuable rack space.

Product Specifications

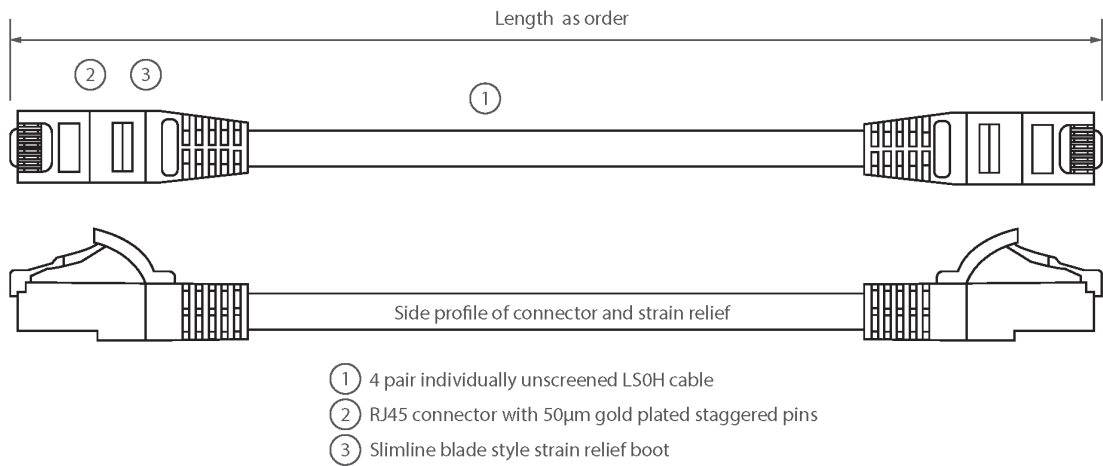
Feature	Values
Cable type	U/UTP
Category	6
Length	0.5 m
Type of connector connection 1	RJ45 8(8)
Type of connector connection 2	RJ45 8(8)
Outer sheath colour	Yellow
Strain relief boot	Moulded-on
Lockable	no

Excel Cat6 Mini Patch Lead 28AWG U/UTP
Unshielded LSOH Blade Booted 0.5 m Yellow
Item Code: 100-527



Strain relief boot colour	Yellow
Flame retardant version	yes
Cable construction	1x4
AWG-size	28
Pin assignment	1:1

Product drawing



Standards

Applicable standard	Detail
ISO/IEC 11801-1:2017	Information technology - Generic cabling for customer premises: Part 1 General Requirements
EN 50173-1:2018	Information technology. Generic cabling systems - General requirements
ANSI/TIA 568-2.D	Balanced Twisted-Pair Telecommunications Cabling and Components Standards
IEC 61156-5:2009+AMD1:2012 CSV	Multicore and symmetrical pair/quad cables for digital communications - Part 5: Symmetrical pair/quad cables with transmission characteristics up to 1 000 MHz - Horizontal floor wiring - Sectional specification
IEC 60332-1-2:2004	Tests on electric and optical fibre cables under fire conditions. Test for vertical flame propagation for a single insulated wire or cable. Procedure for 1 kW pre-mixed flame

Excel Cat6 Mini Patch Lead 28AWG U/UTP Unshielded LSOH Blade Booted 0.5 m Yellow

Item Code: 100-527



IEC 61034-2:2005+A1:2013

Measurement of smoke density of cables burning under defined conditions – Part 2: Test procedure and requirements

RoHS-II/-III (2011/65/EU & 2015/863): 2023

Our products, demonstrate full adherence to the regulatory stipulations of the EU Directive 2011/65/EU (RoHS-II) and its corresponding delegated directive 2015/863 (RoHS-III).

WFD: 2023

Compliant to Waste Framework Directive

SCIP: 2023

Compliant - Does Not Contain Substances of Concern In articles as such or in complex objects (Products)

POPs (EU) No 2019/1021

EU Regulation for the restriction of Persistent Organic Pollutants.

Part Number Table

Part Number	Description
100-504	Excel Cat6 Mini Patch Lead 28AWG U/UTP Unshielded LSOH Blade Booted 0.5 m Grey
100-505	Excel Cat6 Mini Patch Lead 28AWG U/UTP Unshielded LSOH Blade Booted 1 m Grey
100-506	Excel Cat6 Mini Patch Lead 28AWG U/UTP Unshielded LSOH Blade Booted 2 m Grey
100-507	Excel Cat6 Mini Patch Lead 28AWG U/UTP Unshielded LSOH Blade Booted 3 m Grey
100-508	Excel Cat6 Mini Patch Lead 28AWG U/UTP Unshielded LSOH Blade Booted 5 m Grey
100-513	Excel Cat6 Mini Patch Lead 28AWG U/UTP Unshielded LSOH Blade Booted 0.5 m White
100-514	Excel Cat6 Mini Patch Lead 28AWG U/UTP Unshielded LSOH Blade Booted 1 m White
100-515	Excel Cat6 Mini Patch Lead 28AWG U/UTP Unshielded LSOH Blade Booted 2 m White
100-516	Excel Cat6 Mini Patch Lead 28AWG U/UTP Unshielded LSOH Blade Booted 3 m White
100-517	Excel Cat6 Mini Patch Lead 28AWG U/UTP Unshielded LSOH Blade Booted 5 m White
100-518	Excel Cat6 Mini Patch Lead 28AWG U/UTP Unshielded LSOH Blade Booted 0.5 m Blue
100-523	Excel Cat6 Mini Patch Lead 28AWG U/UTP Unshielded LSOH Blade Booted 1 m Blue

Excel Cat6 Mini Patch Lead 28AWG U/UTP Unshielded LSOH Blade Booted 0.5 m Yellow

Item Code: 100-527



100-524	Excel Cat6 Mini Patch Lead 28AWG U/UTP Unshielded LSOH Blade Booted 2 m Blue
100-525	Excel Cat6 Mini Patch Lead 28AWG U/UTP Unshielded LSOH Blade Booted 3 m Blue
100-526	Excel Cat6 Mini Patch Lead 28AWG U/UTP Unshielded LSOH Blade Booted 5 m Blue
100-527	Excel Cat6 Mini Patch Lead 28AWG U/UTP Unshielded LSOH Blade Booted 0.5 m Yellow
100-528	Excel Cat6 Mini Patch Lead 28AWG U/UTP Unshielded LSOH Blade Booted 1 m Yellow
100-533	Excel Cat6 Mini Patch Lead 28AWG U/UTP Unshielded LSOH Blade Booted 2 m Yellow
100-534	Excel Cat6 Mini Patch Lead 28AWG U/UTP Unshielded LSOH Blade Booted 3 m Yellow
100-535	Excel Cat6 Mini Patch Lead 28AWG U/UTP Unshielded LSOH Blade Booted 5 m Yellow
100-536	Excel Cat6 Mini Patch Lead U/UTP Unshielded LSOH Blade Booted 0.3m Grey
100-536-10	Excel Cat6 Mini Patch Lead 28AWG U/UTP Unshielded LSOH Blade Booted 0.3 m Grey (10-Pack)
100-537	Excel Cat6 Mini Patch Lead 28AWG U/UTP Unshielded LSOH Blade Booted 0.75 m Grey
100-538	Excel Cat6 Mini Patch Lead 28AWG U/UTP Unshielded LSOH Blade Booted 1.5 m Grey

Excel is a world class premium performing end to end infrastructure solution designed, Manufactured, supported and delivered without compromise.

Contact us at sales@excel-networking.com



E&OE. Excel is a registered trade name of Mayflex Holdings Ltd.