

Excel Single Gang 27mm Back Box

Item Code: 100-612

excel
without compromise.



Choice of depths

Single gang/double gang options

Excellent impact resistance

RoHS Compliant

ABS material can be recycled

25 Year system warranty

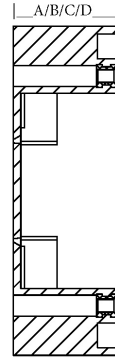
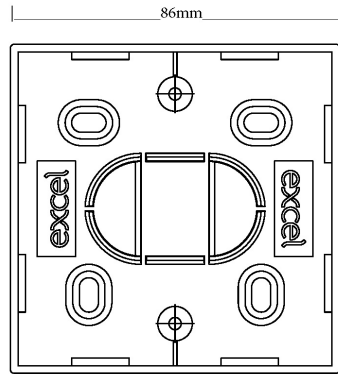
Product Overview

Excel Back Boxes complement any industry-standard single/double gang faceplate. The back boxes are constructed of ABS and include breakaway cable entries to accommodate different situations.

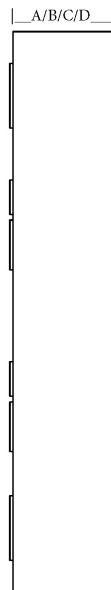
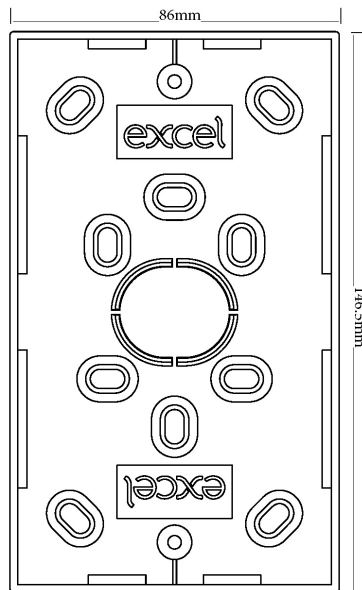
Product Specifications

Feature	Values
Mounting method	Flush mounted
Shape	Square
Model	Single
Length	86 mm
Width	86 mm
Depth	27...27 mm
Mounting switching equipment	Screwing
With screws	yes
Material	ABS Plastic
Colour	White (RAL 9003)

Product drawings



- A - 27mm depth
- B - 32mm depth
- C - 37mm depth
- D - 47mm depth



- A - 27mm depth
- B - 32mm depth
- C - 37mm depth
- D - 47mm depth



Standards

Applicable standard	Description
BSEN 60670-1:2005 + A1:2013	Boxes and enclosures for electrical accessories for household and similar fixed electrical installations general requirements
BSEN 61340-5-1:2007	Protection of electronic devices from electrostatic phenomena. General requirements apply to activities that: manufacture, process, assemble, install, package, label, service, test, inspect, transport or otherwise handle electrical or electronic parts, assemblies and equipment susceptible to damage by electrostatic discharges greater than or equal to 100 V human body model (HBM).
BSEN 60529:1992+A2:2013	Degrees of Protection provided by Enclosures (IP CODE)
Directive 2011/65/EU (RoHS II)	Restriction of the Use of Certain Hazardous Substances in Electrical and Electronic Equipment — compliant. Applies within EU member states).
Directive (EU) 2015/863 (RoHS III)	Amending Directive 2011/65/EU to add four phthalates (DEHP, BBP, DBP, DIBP) to Annex II — compliant.
Directive 2008/98/EC (WFD)	Waste Framework Directive — compliant. Implemented in the UK through the Waste (England and Wales) Regulations 2011 (SI 2011 No. 988).
ECHA SCIP Database	Compliant; product does not contain SVHCs (Substances of Very High Concern) as defined under REACH Article 33(1). Submission obligations met under EU REACH and UK REACH.
Regulation (EU) 2019/1021 (POPs)	EU Regulation on Persistent Organic Pollutants — compliant. For Great Britain, compliance is aligned with the Persistent Organic Pollutants (Amendment) (EU Exit) Regulations 2020 (SI 2020 No. 1355).
UK SI 2012 No. 3032	The Restriction of the Use of Certain Hazardous Substances in Electrical and Electronic Equipment Regulations 2012 (UK RoHS) — compliant for Great Britain. Retained EU law, as amended by the Product Safety and Metrology (Amendment etc.) (EU Exit) Regulations 2019.

Part Number Table

Part Number	Description
100-612	Excel Single Gang 27mm Back Box
100-614	Excel Single Gang 32mm Back Box
100-616	Excel Single Gang 37mm Back Box

Excel Single Gang 27mm Back Box



Item Code: 100-612

100-618	Excel Single Gang 47mm Back Box
100-619	Excel Double Gang 27mm Back Box
100-620	Excel Double Gang 37mm Back Box
100-621	Excel Double Gang 32mm Back Box
100-622	Excel Double Gang 47mm Back Box

Excel is a world class premium performing end to end infrastructure solution designed, Manufactured, supported and delivered without compromise.

Contact us at sales@excel-networking.com



E&OE. Excel is a registered trade name of Mayflex Holdings Ltd.