

Excel Double Gang 27mm Back Box

Item Code: 100-619

excel
without compromise.



✕ Choice of depths

✕ Single gang/double gang options

✕ Excellent impact resistance

✕ RoHS Compliant

✕ ABS material can be recycled

✕ 25 Year system warranty

Product Overview

Excel Back Boxes complement any industry-standard single/double gang faceplate. The back boxes are constructed of ABS and include breakaway cable entries to accommodate different situations.

Product Specifications

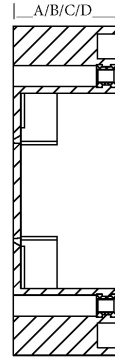
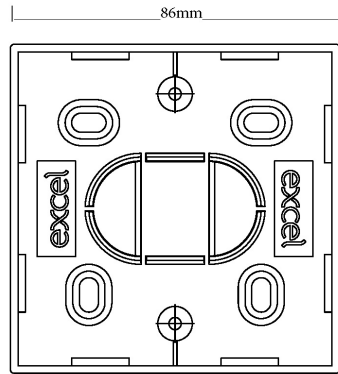
| Feature | Values |
|------------------------------|------------------|
| Mounting method | Flush mounted |
| Shape | Rectangular |
| Model | Double |
| Length | 86 mm |
| Width | 146.5 mm |
| Depth | 27...27 mm |
| Mounting switching equipment | Screwing |
| With screws | yes |
| Material | ABS Plastic |
| Colour | White (RAL 9003) |

Excel Double Gang 27mm Back Box

Item Code: 100-619



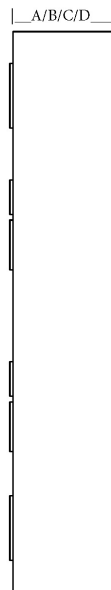
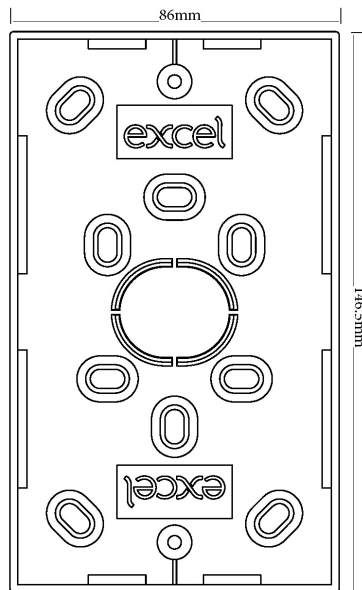
Product drawings



- A - 27mm depth
- B - 32mm depth
- C - 37mm depth
- D - 47mm depth



M4 BS thread



- A - 27mm depth
- B - 32mm depth
- C - 37mm depth
- D - 47mm depth



M4 BS thread

Excel Double Gang 27mm Back Box

Item Code: 100-619



Standards

| Applicable standard | Description |
|--|--|
| BSEN 60670-1:2005 + A1:2013 | Boxes and enclosures for electrical accessories for household and similar fixed electrical installations general requirements |
| BSEN 61340-5-1:2007 | Protection of electronic devices from electrostatic phenomena. General requirements apply to activities that: manufacture, process, assemble, install, package, label, service, test, inspect, transport or otherwise handle electrical or electronic parts, assemblies and equipment susceptible to damage by electrostatic discharges greater than or equal to 100 V human body model (HBM). |
| BSEN 60529:1992+A2:2013 | Degrees of Protection provided by Enclosures (IP CODE) |
| RoHS-II/-III (2011/65/EU & 2015/863): 2023 | Our products, demonstrate full adherence to the regulatory stipulations of the EU Directive 2011/65/EU (RoHS-II) and its corresponding delegated directive 2015/863 (RoHS-III). |
| WFD: 2023 | Compliant to Waste Framework Directive |
| SCIP: 2023 | Compliant - Does Not Contain Substances of Concern In articles as such or in complex objects (Products) |
| POPs (EU) No 2019/1021 | EU Regulation for the restriction of Persistent Organic Pollutants. |

Part Number Table

| Part Number | Description |
|-------------|---------------------------------|
| 100-612 | Excel Single Gang 27mm Back Box |
| 100-614 | Excel Single Gang 32mm Back Box |
| 100-616 | Excel Single Gang 37mm Back Box |
| 100-618 | Excel Single Gang 47mm Back Box |
| 100-619 | Excel Double Gang 27mm Back Box |
| 100-620 | Excel Double Gang 37mm Back Box |
| 100-621 | Excel Double Gang 32mm Back Box |
| 100-622 | Excel Double Gang 47mm Back Box |

Excel is a world class premium performing end to end infrastructure solution designed, Manufactured, supported and delivered without compromise.

Contact us at sales@excel-networking.com



E&OE. Excel is a registered trade name of Mayflex Holdings Ltd.