

Excel Double Gang 47mm Back Box

Item Code: 100-622

excel
without compromise.



✕ Choice of depths

✕ Single gang/double gang options

✕ Excellent impact resistance

✕ RoHS Compliant

✕ ABS material can be recycled

✕ 25 Year system warranty

✕ CIBSE TM65 Embodied Carbon: 0.487 kg CO2e

Product Overview

Excel Back Boxes complement any industry-standard single/double gang faceplate. The back boxes are constructed of ABS and include breakaway cable entries to accommodate different situations.

Product Specifications

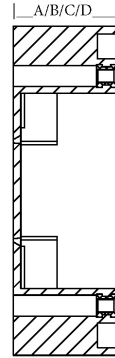
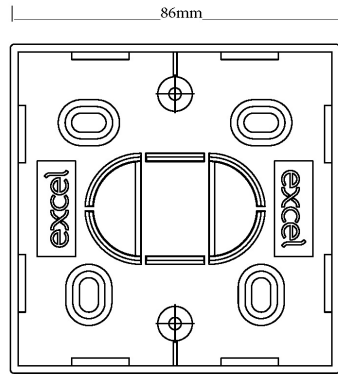
Feature	Values
Mounting method	Flush mounted
Shape	Rectangular
Model	Double
Length	86 mm
Width	146.5 mm
Depth	47...47 mm
Mounting switching equipment	Screwing
With screws	yes
Material	ABS Plastic
Colour	White (RAL 9003)

Excel Double Gang 47mm Back Box

Item Code: 100-622



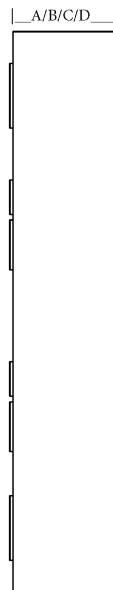
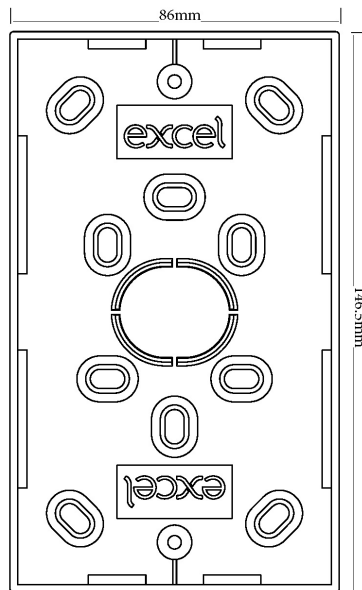
Product drawings



- A - 27mm depth
- B - 32mm depth
- C - 37mm depth
- D - 47mm depth



M4 BS thread



- A - 27mm depth
- B - 32mm depth
- C - 37mm depth
- D - 47mm depth



M4 BS thread

Excel Double Gang 47mm Back Box

Item Code: 100-622



Standards

Applicable standard	Description
BSEN 60670-1:2005 + A1:2013	Boxes and enclosures for electrical accessories for household and similar fixed electrical installations general requirements
BSEN 61340-5-1:2007	Protection of electronic devices from electrostatic phenomena. General requirements apply to activities that: manufacture, process, assemble, install, package, label, service, test, inspect, transport or otherwise handle electrical or electronic parts, assemblies and equipment susceptible to damage by electrostatic discharges greater than or equal to 100 V human body model (HBM).
BSEN 60529:1992+A2:2013	Degrees of Protection provided by Enclosures (IP CODE)
RoHS-II/-III (2011/65/EU & 2015/863): 2023	Our products, demonstrate full adherence to the regulatory stipulations of the EU Directive 2011/65/EU (RoHS-II) and its corresponding delegated directive 2015/863 (RoHS-III).
WFD: 2023	Compliant to Waste Framework Directive
SCIP: 2023	Compliant - Does Not Contain Substances of Concern In articles as such or in complex objects (Products)
POPs (EU) No 2019/1021	EU Regulation for the restriction of Persistent Organic Pollutants.

Part Number Table

Part Number	Description
100-612	Excel Single Gang 27mm Back Box
100-614	Excel Single Gang 32mm Back Box
100-616	Excel Single Gang 37mm Back Box
100-618	Excel Single Gang 47mm Back Box
100-619	Excel Double Gang 27mm Back Box
100-620	Excel Double Gang 37mm Back Box
100-621	Excel Double Gang 32mm Back Box
100-622	Excel Double Gang 47mm Back Box

Excel is a world class premium performing end to end infrastructure solution designed, Manufactured, supported and delivered without compromise.

Contact us at sales@excel-networking.com



E&OE. Excel is a registered trade name of Mayflex Holdings Ltd.