

Excel Environ ConSolidation Enclosure Residential Network Cabinet 453mm x 430mm x 160mm Light Grey

Item Code: 100-658



- ✕ Compact design
- ✕ Integrated cable tie points
- ✕ Lockable front door
- ✕ Two level mounting area
- ✕ Use p/n 100-753 Keystone Frame for mounting Keystone Jacks
- ✕ CIBSE TM65 Embodied Carbon: 48.443 kg CO2e

Product Overview

Excel Environ Consolidation Enclosure Residential Network cabinet 453 mm x 430 mm x 160 mm Light Grey, part of a huge range of Network Data Cabinets available from Mayflex.

The Excel range of wall enclosures has been designed to be a multifunctional set of products, which can form part of a network in multiple locations. With the ability to change the internal structures to fit most applications within a passive optical network and edge of network cabling designs, these enclosures can be adapted to house either fibre or copper (or both) within a confined space. These enclosures are suitable for risers, equipment rooms and remote locations.

The Excel Medium Riser enclosure allows equipment to be mounted on to multifunctional mounting plates in various configurations throughout the enclosure. Dedicated 10" mounting profiles offer adequate space for up to 24 RJ45 connections that allow copper and fibre connections to be fixed inside according to the customer's requirements. With the removal of the internal mounting plate, the enclosure can be converted to a fibre optic splice box, allowing up to 240 fibres to be spliced. Each enclosure has multiple cable fixing points using cable ties or two dedicated cable clamps for steel tap armoured cables. Dedicated side management enables easy routing of incoming and outgoing cables via the integrated brush strips at the top and bottom of the unit.

Product Specifications

Feature	Values
Mounting Profile	Yes
Model	Residential
Type of profile rail	L-shaped
Number of doors	1
Width	430 mm

# Excel Environ ConSolidation Enclosure Residential Network Cabinet 453mm x 430mm x 160mm Light G...

Item Code: 100-658

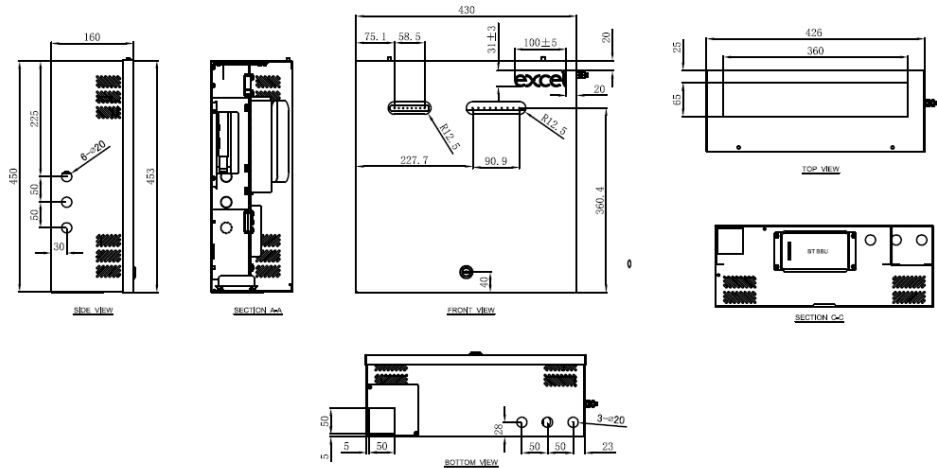


Height	453 mm
Depth	160 mm
Modular spacing	254 mm (10 inch)
With roof plate	yes
With front door	yes
Side panels included	no
Material	Steel
Type of surface	Powder coated
Colour	Grey White
RAL-number	9002

## Additional specifications

Features	Values
Top cable entry / exit	Brush strip
Bottom cable entry holes	3 x 20mm
Bottom entry square hole	50mm x 50mm
Left/right side cable entry	3 x 20mm
IP rating	IP20
Material thickness	1.2mm
Material coating	Powder Coating
M6 earthing stud	1
Operating temprature	-40 to +60 °C
Integrated tie points	Top/Bottom

Product drawing



Included accessories

Accessories	Information	Quantity
Nylon cable tie	200mm x 4mm	10
Excel velcro Tie	285mm x 20mm	4
Twist tie		4
Removable/lockable door		1
Port identification label		1

Standards

Applicable standard	Detail
RoHS-II/-III (2011/65/EU & 2015/863): 2023	Our products, demonstrate full adherence to the regulatory stipulations of the EU Directive 2011/65/EU (RoHS-II) and its corresponding delegated directive 2015/863 (RoHS-III).
IEC 61754-1:2013	Fibre optic interconnecting devices and passive components - Fibre optic connector interfaces - Part 1: General and guidance
ISO/IEC 11801-1:2017	Information technology - Generic cabling for customer premises: Part 1 General Requirements
EN 50173-1:2018	Information technology. Generic cabling systems - General requirements

Excel Environ ConSolidation Enclosure Residential  
Network Cabinet 453mm x 430mm x 160mm Light  
G...  
Item Code: 100-658



WFD: 2023	Compliant to Waste Framework Directive
SCIP: 2023	Compliant - Does Not Contain Substances of Concern In articles as such or in complex objects (Products)
POPs (EU) No 2019/1021	EU Regulation for the restriction of Persistent Organic Pollutants.

Part Number Table

Part Number	Description
100-658	Excel Environ ConSolidation Enclosure Residential Network Cabinet 453mm x 430mm x 160mm Light Grey

Excel is a world class premium performing end to end infrastructure solution designed, Manufactured, supported and delivered without compromise.

Contact us at [sales@excel-networking.com](mailto:sales@excel-networking.com)



E&OE. Excel is a registered trade name of Mayflex Holdings Ltd.