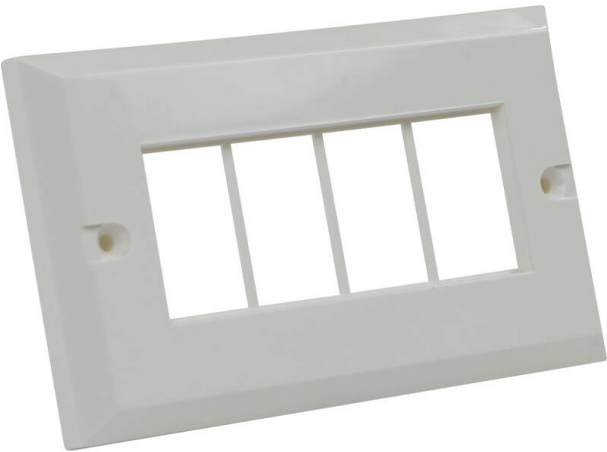


Excel White Double Gang Bevelled Plate LJ6C without Blanks

Item Code: 100-671



- ✕ Available in single/double gang
- ✕ For use with 6c data or voice modules
- ✕ Bevelled design
- ✕ Screen printing option available
- ✕ 25 Year system warranty
- ✕ CIBSE TM65 Embodied Carbon: 0.235 kg CO2e

Product Overview

A new range of single and double gang faceplates and associated blanks, specifically designed for the mounting of the Excel range of 6c voice and data modules.

Product Specifications

Feature	Values
Number of units	4
Flush-mounted installation	yes
Suitable for floor box	yes
Material	Thermoplastic
Colour	White
RAL-number (akin)	9016
Type of fastening	Screw mounting
Width	146 mm
Height	85 mm
Aperture width	88 mm
Aperture height	37 mm

Excel White Double Gang Bevelled Plate LJ6C without Blanks

Item Code: 100-671



Standards

Applicable standard	Detail
BS EN 60670-1:2005 + A1:2013	Boxes and enclosures for electrical accessories for household and similar fixed electrical installations general requirements
BS EN 61340-5-1:2007	Protection of electronic devices from electrostatic phenomena. General requirements apply to activities that: manufacture, process, assemble, install, package, label, service, test, inspect, transport or otherwise handle electrical or electronic parts, assemblies and equipment susceptible to damage by electrostatic discharges greater than or equal to 100 V human body model (HBM).
BS EN 60529:1992+A2:2013	Degrees of Protection provided by Enclosures (IP CODE)
RoHS-II/-III (2011/65/EU & 2015/863): 2023	Our products, demonstrate full adherence to the regulatory stipulations of the EU Directive 2011/65/EU (RoHS-II) and its corresponding delegated directive 2015/863 (RoHS-III).
WFD: 2023	Compliant to Waste Framework Directive
SCIP: 2023	Compliant - Does Not Contain Substances of Concern In articles as such or in complex objects (Products)
POPs (EU) No 2019/1021	EU Regulation for the restriction of Persistent Organic Pollutants.

Part Number Table

Part Number	Description
100-670	Excel White Single Gang Bevelled Plate LJ6C without Blanks
100-671	Excel White Double Gang Bevelled Plate LJ6C without Blanks

Excel is a world class premium performing end to end infrastructure solution designed, Manufactured, supported and delivered without compromise.

Contact us at sales@excel-networking.com



E&OE. Excel is a registered trade name of Mayflex Holdings Ltd.