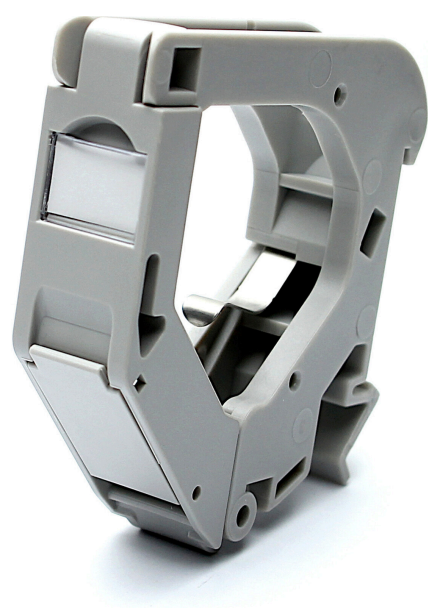


Excel DIN rail Mountable Module for Keystone Jacks



Item Code: 100-701



- ✕ DIN rail mountable
- ✕ Intergrated dust cover
- ✕ Intergrated label holder

Product Overview

The Excel DIN Rail mounting bracket allows keystone jacks to be mounted singularly onto a standard 32mm DIN Rail at an angle to reduce bend radius and save space within the enclosures when mounted. Each mounting bracket has an integrated dust cover for protection on unused ports and individual labelling areas for identification.

When used with Screened Keystone jacks, the grounding spring makes contact with the outer casing of the keystone jack to give a secure earthing point through to the Din Rail.

Product Specifications

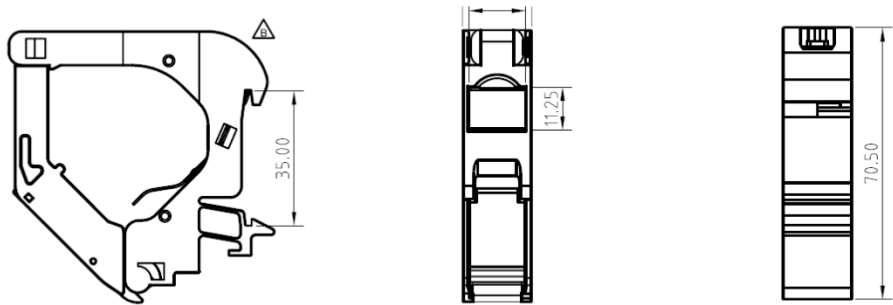
Feature	Values
Type of fastening	DIN rail (top hat rail) 32 mm
Type of DIN-rail adapter	Straight
Material	Plastic

Excel DIN rail Mountable Module for Keystone Jacks



Item Code: 100-701

Product drawing



Standards

Applicable standard	Detail
RoHS-II/-III (2011/65/EU & 2015/863): 2023	Our products, demonstrate full adherence to the regulatory stipulations of the EU Directive 2011/65/EU (RoHS-II) and its corresponding delegated directive 2015/863 (RoHS-III).
ISO/IEC 11801-1:2017	Information technology - Generic cabling for customer premises: Part 1 General Requirements
EN 50173-1:2018	Information technology. Generic cabling systems - General requirements
WFD: 2023	Compliant to Waste Framework Directive
SCIP: 2023	Compliant - Does Not Contain Substances of Concern In articles as such or in complex objects (Products)
POPs (EU) No 2019/1021	EU Regulation for the restriction of Persistent Organic Pollutants.

Part Number Table

Part Number	Description
100-701	Excel DIN rail Mountable Module for Keystone Jacks

Excel is a world class premium performing end to end infrastructure solution designed, Manufactured, supported and delivered without compromise.

Contact us at sales@excel-networking.com



E&OE. Excel is a registered trade name of Mayflex Holdings Ltd.