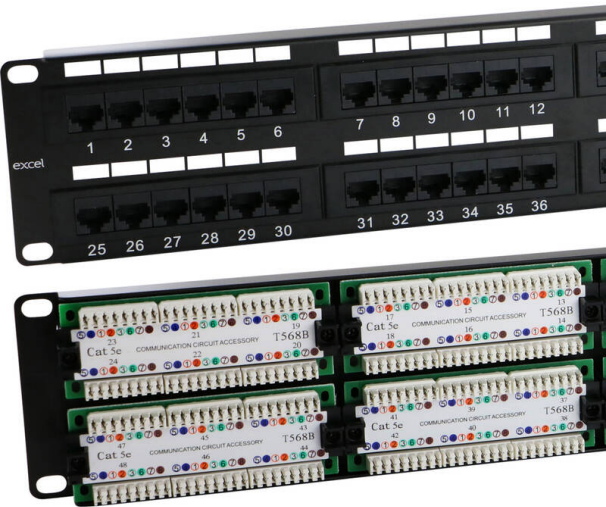


Excel Cat5e 48 Port Unscreened Patch Panel 2U LSA Punch Down Black

Item Code: 100-728



Category 5e

Cage nuts and mini cable ties included

LSA Style Termination Blocks

T568A/B Wiring Configuration

25 Year system warranty

Supports Gigabit Ethernet

Product Overview

Excel Category 5e Patch Panels comply with the current standards for enhanced Category 5. Each panel offers a choice of labelling with the option to use the screen printed fields on the panel facia or the slide label system or pre printed 1-96 labelling scheme which is enclosed with each panel.

Ease of installation is assured with ample rear cable management positions and LSA IDC blocks. A choice of port density - 16 & 24 Port 1U, 48 Port 2U (100-724 = 3U) - is available to suit all applications. Each panel is available in a choice of colours to allow identification of either applications, departments or services. Cage nuts and mini cable ties are included with each panel.

Product Specifications

| Feature | Values |
|---------------------------|-----------------------------|
| Number of ports – loaded | 48 |
| Type of connector | RJ45 8(8) |
| Shielded | no |
| Category | 5E |
| Connection type | LSA |
| Number of rack units (RU) | 2 |
| Colour | Black |
| Mounting method | 482.6 mm (19 inch) mounting |
| Height | 88 mm |
| Width | 480 mm |

Excel Cat5e 48 Port Unscreened Patch Panel 2U LSA
Punch Down Black

Item Code: 100-728



Depth 33 mm

Additional specifications

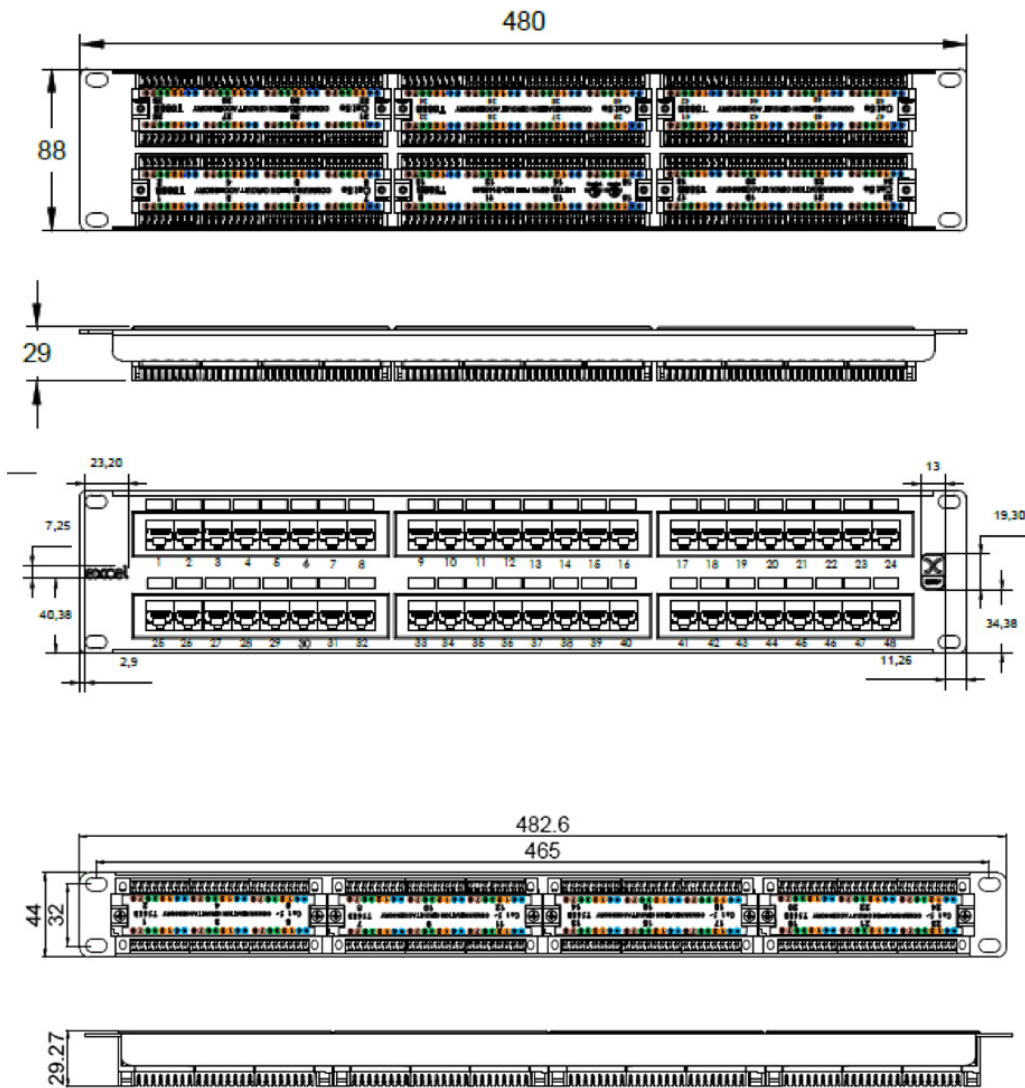
| Features | Values |
|----------------------------------|---|
| Wiring Specification | T568B |
| RJ45 Jack Min life expectancy | 750 insertions |
| RJ45 Jack contact | 50 microinch gold over 100 microinch nickel undercoat |
| IDC Contacts Max life expectancy | 200 terminations |
| Contact compatibility | 22 to 26AWG |
| Operating Temperature Range | -10°C to 60°C |
| Storage Temperature Range | -40°C to 68°C |
| Relative Humidity | 10% to 90% |
| Panel material | SPCC |
| Frame material | ABS |
| Jack housing material | PBT |
| IDC material | Phosphor bronze, tin over nickel undercoat |

Excel Cat5e 48 Port Unscreened Patch Panel 2U LSA
Punch Down Black

Item Code: 100-728



Product drawing



Standards

| Applicable standard | Detail |
|--------------------------------|--|
| ISO/IEC 11801-1:2017 | Information technology - Generic cabling for customer premises: Part 1 General Requirements |
| IEC 61156-5:2009+AMD1:2012 CSV | Multicore and symmetrical pair/quad cables for digital communications - Part 5: Symmetrical pair/quad cables with transmission characteristics up to 1 000 MHz - |

Excel Cat5e 48 Port Unscreened Patch Panel 2U LSA Punch Down Black

Item Code: 100-728



| | |
|--|---|
| | Horizontal floor wiring - Sectional specification |
| EN 50173-1:2018 | Information technology. Generic cabling systems - General requirements |
| EN 50173-2:2007 + A1:2010 | Information technology. Generic cabling systems - Office premises |
| ANSI/TIA 568-2.D | Balanced Twisted-Pair Telecommunications Cabling and Components Standards |
| ANSI/EIA-310-E | Electronic Industries Association standard for horizontal spacing, vertical hole spacing, rack opening and front panel width |
| RoHS-II/-III (2011/65/EU & 2015/863): 2023 | Our products, demonstrate full adherence to the regulatory stipulations of the EU Directive 2011/65/EU (RoHS-II) and its corresponding delegated directive 2015/863 (RoHS-III). |
| WFD: 2023 | Compliant to Waste Framework Directive |
| SCIP: 2023 | Compliant - Does Not Contain Substances of Concern In articles as such or in complex objects (Products) |
| POPs (EU) No 2019/1021 | EU Regulation for the restriction of Persistent Organic Pollutants. |

Part Number Table

| Part Number | Description |
|-------------|--|
| 100-450 | Excel Cat5e 24 Port Unscreened Patch Panel 1U LSA Punch Down Blue |
| 100-451 | Excel Cat5e 24 Port Unscreened Patch Panel 1U LSA Punch Down Red |
| 100-452 | Excel Cat5e 24 Port Unscreened Patch Panel 1U LSA Punch Down Green |
| 100-453 | Excel Category 5e Unscreened Patch Panel - 48-port, 2U - Blue |
| 100-454 | Excel Category 5e Unscreened Patch Panel - 48-port, 2U - Red |
| 100-455 | Excel Category 5e Unscreened Patch Panel - 48-port, 2U - Green |
| 100-722 | Excel Category 5e Unscreened Patch Panel - 32-port, 2U - Black |
| 100-724 | Excel Cat5e 48 Port Unscreened Patch Panel 3U LSA Punch Down Black |
| 100-726 | Excel Cat5e 24 Port Unscreened Patch Panel 1U LSA Punch Down Black |
| 100-728 | Excel Cat5e 48 Port Unscreened Patch Panel 2U LSA Punch Down Black |
| 100-748 | Excel Cat5e 24 Port Unscreened Patch Panel 1U LSA Punch Down Beige |

Excel is a world class premium performing end to end infrastructure solution designed, Manufactured, supported and delivered without compromise.

Contact us at sales@excel-networking.com



E&OE. Excel is a registered trade name of Mayflex Holdings Ltd.