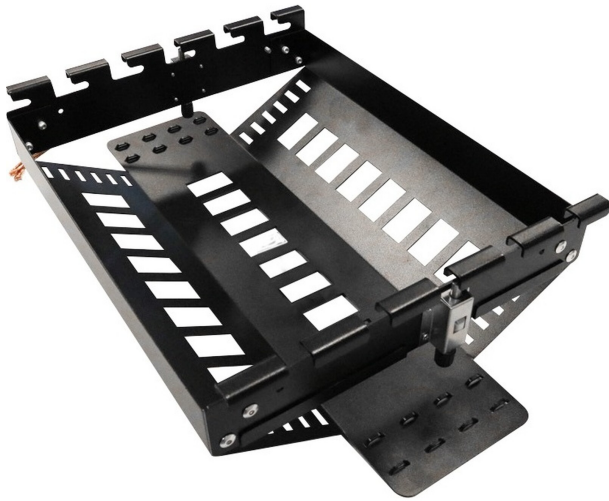


# Excel 24 Port Overhead Tray Consolidation Point

Item Code: 100-927



✕ 24 copper ports

✕ Integrated cable tie point

✕ Toolless installation

## Product Overview

The Excel 24 port overhead tray consolidation point has been designed to allow 24 LJ6C modules to be installed onto standards basket tray allowing up to 24 connections to be installed above cabinets or anywhere along the containment run where extra points are needed. The unique locking mechanism allows the unit to be fitted / moved easily. The frame hooks onto the basket tray and the two push button plungers hold the frame in position.

## Product Specifications

| Feature  | Values   |
|--|----------|
| Surface mounted                                  | no       |
| Flush-mounted installation/build in installation | yes      |
| Floor box/sub-floor mounted                      | no       |
| Type of fastening                                | Clip-on  |
| With outlets / modules                           | no       |
| Suitable for number of outlets / modules         | 24       |
| With label space                                 | yes      |
| Outlet direction                                 | Straight |
| With dust cover                                  | no       |

# Excel 24 Port Overhead Tray Consolidation Point

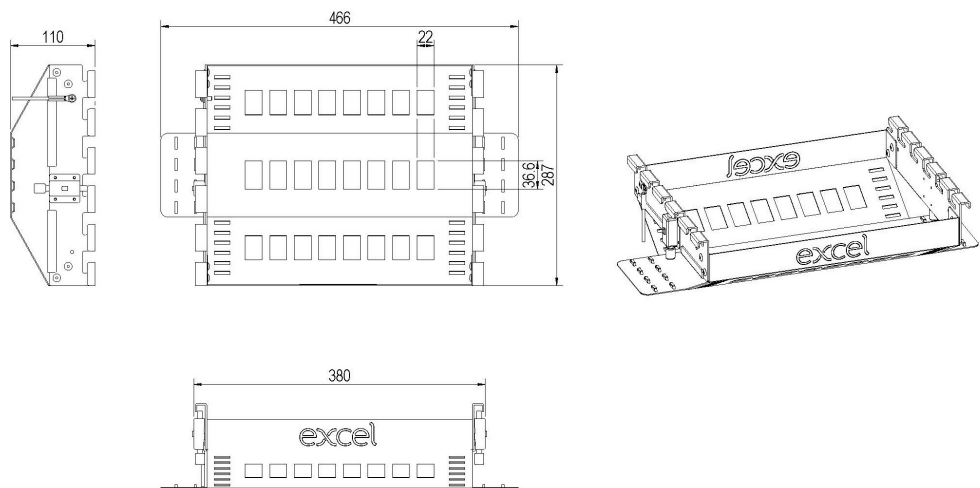


Item Code: 100-927

## Additional specifications

| Features              | Values            |
|-----------------------|-------------------|
| Material              | Cold rolled steel |
| Material coating      | 1.2mm             |
| Operating temperature | -40 to +80 °C     |

## Product drawing



## Standards

| Applicable standard                        | Detail  |
|--|---|
| RoHS-II/-III (2011/65/EU & 2015/863): 2023 | Our products, demonstrate full adherence to the regulatory stipulations of the EU Directive 2011/65/EU (RoHS-II) and its corresponding delegated directive 2015/863 (RoHS-III). |
| ISO/IEC 11801-1:2017                       | Information technology - Generic cabling for customer premises: Part 1 General Requirements   |
| EN 50173-1:2018                            | Information technology. Generic cabling systems - General requirements  |
| WFD: 2023                                  | Compliant to Waste Framework Directive  |
| SCIP: 2023                                 | Compliant - Does Not Contain Substances of Concern In articles as such or in complex objects (Products)   |
| POPs (EU) No 2019/1021                     | EU Regulation for the restriction of Persistent Organic   |

# Excel 24 Port Overhead Tray Consolidation Point

Item Code: 100-927



Pollutants.

## Part Number Table

| Part Number | Description                                     |
|-------------|---|
| 100-927     | Excel 24 Port Overhead Tray Consolidation Point |

Excel is a world class premium performing end to end infrastructure solution designed, Manufactured, supported and delivered without compromise.

Contact us at [sales@excel-networking.com](mailto:sales@excel-networking.com)



E&OE. Excel is a registered trade name of Mayflex Holdings Ltd.