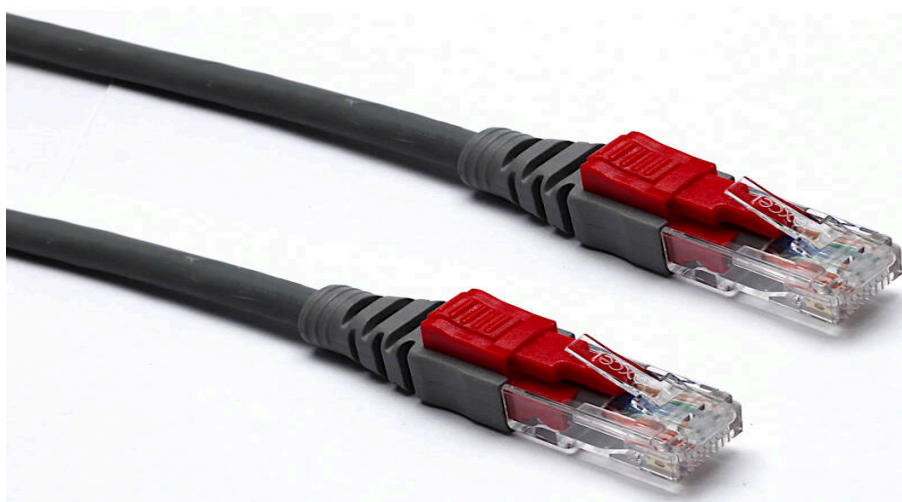


Excel Cat6 Lockable Patch Lead U/UTP Unshielded LSOH Blade Booted 0.5 m Grey (10-Pack)

excel
without compromise.

Part Code: 101-100-10

sales@excel-networking.com
excel-networking.com



Main Features

- / Secure, prevents unwanted disconnection
- / Category 6
- / Independently verified
- / Keys sold separately
- / Backwards compatible
- / T568B wiring

Product Overview

Excel Category 6 U/UTP Lockable patch leads are manufactured and tested to ISO 11801, EN 50173 & TIA/EIA 568 requirements for patch cord assemblies and provide optimum performance levels for structured cabling installations.

Excel Category 6 U/UTP Lockable patch leads provide added security, preventing unwanted disconnection on secure or sensitive circuits. Disconnection can only be achieved by using the key which is supplied separately to the Patch Leads.

Product Specifications

Excel Cat6 Lockable Patch Lead U/UTP Unshielded LSOH Blade Booted 0.5 m Grey (10-Pack)

Part Code: 101-100-10

sales@excel-networking.com
excel-networking.com

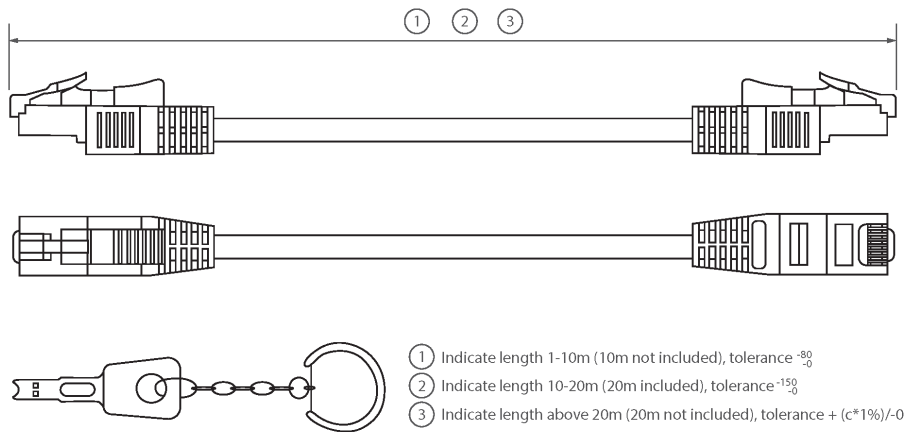
Feature	Values
Cable type	U/UTP
Category	6
Length	0.5 m
Type of connector connection 1	RJ45 8(8)
Type of connector connection 2	RJ45 8(8)
Outer sheath colour	Grey
Strain relief boot	Moulded-on
Lockable	yes
Strain relief boot colour	Grey
Flame retardant version	yes
Cable construction	1x4
AWG-size	24
Pin assignment	1:1

Excel Cat6 Lockable Patch Lead U/UTP Unshielded LSOH Blade Booted 0.5 m Grey (10-Pack)

Part Code: 101-100-10

sales@excel-networking.com
excel-networking.com

Product drawing



Standards

Applicable standard	Detail
ISO/IEC 11801-1:2017	Information technology - Generic cabling for customer premises: Part 1 General Requirements
EN 50173-1:2018	Information technology. Generic cabling systems - General requirements
ANSI/TIA 568-2.D	Balanced Twisted-Pair Telecommunications Cabling and Components Standards
IEC 61156-5:2009+AMD1:2012 CSV	Multicore and symmetrical pair/quad cables for digital communications - Part 5: Symmetrical pair/quad cables with transmission characteristics up to 1 000 MHz - Horizontal floor wiring - Sectional specification
IEC 60332-1-2:2004	Tests on electric and optical fibre cables under fire conditions. Test for vertical flame propagation for a single insulated wire or cable. Procedure for 1 kW pre-mixed flame
IEC 61034-2:2005+A1:2013	Measurement of smoke density of cables burning under

Excel Cat6 Lockable Patch Lead U/UTP Unshielded LSOH Blade Booted 0.5 m Grey (10-Pack)

Part Code: 101-100-10

sales@excel-networking.com
excel-networking.com

	defined conditions – Part 2: Test procedure and requirements
Directive 2011/65/EU (RoHS II)	Restriction of the Use of Certain Hazardous Substances in Electrical and Electronic Equipment — compliant. Applies within EU member states).
Directive (EU) 2015/863 (RoHS III)	Amending Directive 2011/65/EU to add four phthalates (DEHP, BBP, DBP, DIBP) to Annex II — compliant.
Directive 2008/98/EC (WFD)	Waste Framework Directive — compliant. Implemented in the UK through the Waste (England and Wales) Regulations 2011 (SI 2011 No. 988).
ECHA SCIP Database	Compliant; product does not contain SVHCs (Substances of Very High Concern) as defined under REACH Article 33(1). Submission obligations met under EU REACH and UK REACH.
Regulation (EU) 2019/1021 (POPs)	EU Regulation on Persistent Organic Pollutants — compliant. For Great Britain, compliance is aligned with the Persistent Organic Pollutants (Amendment) (EU Exit) Regulations 2020 (SI 2020 No. 1355).
UK SI 2012 No. 3032	The Restriction of the Use of Certain Hazardous Substances in Electrical and Electronic Equipment Regulations 2012 (UK RoHS) — compliant for Great Britain. Retained EU law, as amended by the Product Safety and Metrology (Amendment etc.) (EU Exit) Regulations 2019.

Part Code Table

Part Code	Description
101-100-10	Excel Cat6 Lockable Patch Lead U/UTP Unshielded LSOH Blade Booted 0.5 m Grey (10-Pack)