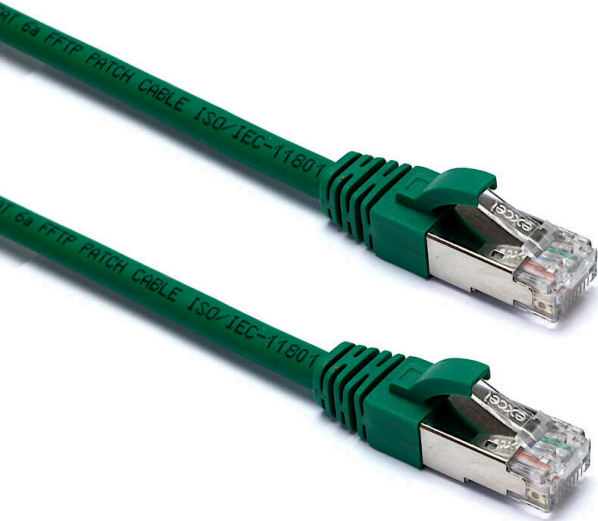


Excel Cat6A Patch Lead S/FTP Shielded LSOH Blade Booted 215 mm Green (10-Pack)

Item Code: 101-194-10



- Specified to 500MHz
- Suitable for 10 Gigabit 10GBase-T, POE++ applications
- Individual foil screen over each pair
- Blade style moulded strain relief boot with clip protector
- Panel-to-switch length, choice of length and colour
- LSOH outer sheath
- CIBSE TM65 Embodied Carbon: 1.603 kg CO2e

Product Overview

Excel Category 6A (Augmented Category 6) patch leads take the performance capabilities of copper infrastructure to new levels. Designed to the current ISO and EIA/TIA standards for Class Ea augmented Category 6A performance these products are intended to deliver reliable, high network performance including support of emerging applications such as 10GBase-T, 10 Gigabit Ethernet.

Each Excel Category 6A patch lead consists of 4 twisted pairs of 26AWG stranded copper wires, an aluminium/polyester foil tape provides an individual screen for each pair. These pairs are then cabled together, with different lay lengths to ensure optimum performance. Staggered pin RJ45 Screened plugs, terminate the cable, and each lead is fitted with colour coded slimline moulded boots, suitable for use in high density router or switch blades.

Product Specifications

Feature	Values
Cable type	S/FTP
Category	6A (IEC)
Length	0.215 m
Type of connector connection 1	RJ45 8(8)
Type of connector connection 2	RJ45 8(8)

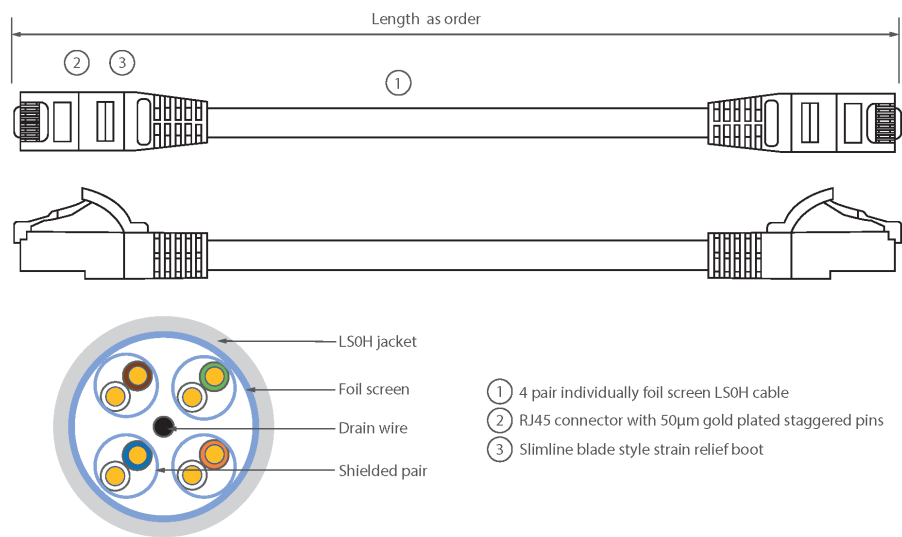
Excel Cat6A Patch Lead S/FTP Shielded LSOH Blade Booted 215 mm Green (10-Pack)



Item Code: 101-194-10

Outer sheath colour	Green
Strain relief boot	Moulded-on
Lockable	no
Strain relief boot colour	Green
Flame retardant version	yes
Cable construction	1x4
AWG-size	26
Pin assignment	1:1

Product drawing



Standards

Applicable standard	Detail
ISO/IEC 11801-1:2017	Information technology - Generic cabling for customer premises: Part 1 General Requirements
EN 50173-1:2018	Information technology. Generic cabling systems - General requirements
ANSI/TIA 568-2.D	Balanced Twisted-Pair Telecommunications Cabling and Components Standards
IEC 61156-5:2009+AMD1:2012 CSV	Multicore and symmetrical pair/quad cables for digital communications - Part 5: Symmetrical pair/quad cables

Excel Cat6A Patch Lead S/FTP Shielded LSOH Blade Booted 215 mm Green (10-Pack)

Item Code: 101-194-10



	with transmission characteristics up to 1 000 MHz - Horizontal floor wiring - Sectional specification
IEC 60332-1-2:2004	Tests on electric and optical fibre cables under fire conditions. Test for vertical flame propagation for a single insulated wire or cable. Procedure for 1 kW pre-mixed flame
IEC 61034-2:2005+A1:2013	Measurement of smoke density of cables burning under defined conditions - Part 2: Test procedure and requirements
RoHS-II/III (2011/65/EU & 2015/863): 2023	Our products, demonstrate full adherence to the regulatory stipulations of the EU Directive 2011/65/EU (RoHS-II) and its corresponding delegated directive 2015/863 (RoHS-III).
WFD: 2023	Compliant to Waste Framework Directive
SCIP: 2023	Compliant - Does Not Contain Substances of Concern In articles as such or in complex objects (Products)
POPs (EU) No 2019/1021	EU Regulation for the restriction of Persistent Organic Pollutants.

Part Number Table

Part Number	Description
101-188-10	Excel Cat6A Patch Lead S/FTP Shielded LSOH Blade Booted 215 mm Grey (10-Pack)
101-189-10	Excel Cat6A Patch Lead S/FTP Shielded LSOH Blade Booted 215 mm White (10-Pack)
101-190-10	Excel Cat6A Patch Lead S/FTP Shielded LSOH Blade Booted 215 mm Yellow (10-Pack)
101-191-10	Excel Cat6A Patch Lead S/FTP Shielded LSOH Blade Booted 215 mm Black (10-Pack)
101-192-10	Excel Cat6A Patch Lead S/FTP Shielded LSOH Blade Booted 215 mm Blue (10-Pack)
101-193-10	Excel Cat6A Patch Lead S/FTP Shielded LSOH Blade Booted 215 mm Red (10-Pack)
101-194-10	Excel Cat6A Patch Lead S/FTP Shielded LSOH Blade Booted 215 mm Green (10-Pack)
101-195-10	Excel Cat6A Patch Lead S/FTP Shielded LSOH Blade Booted 215 mm Orange (10-Pack)
101-196-10	Excel Cat6A Patch Lead S/FTP Shielded LSOH Blade Booted 215 mm Violet (10-Pack)

Excel is a world class premium performing end to end infrastructure solution designed, Manufactured, supported and delivered without compromise.

Contact us at sales@excel-networking.com



E&OE. Excel is a registered trade name of Mayflex Holdings Ltd.