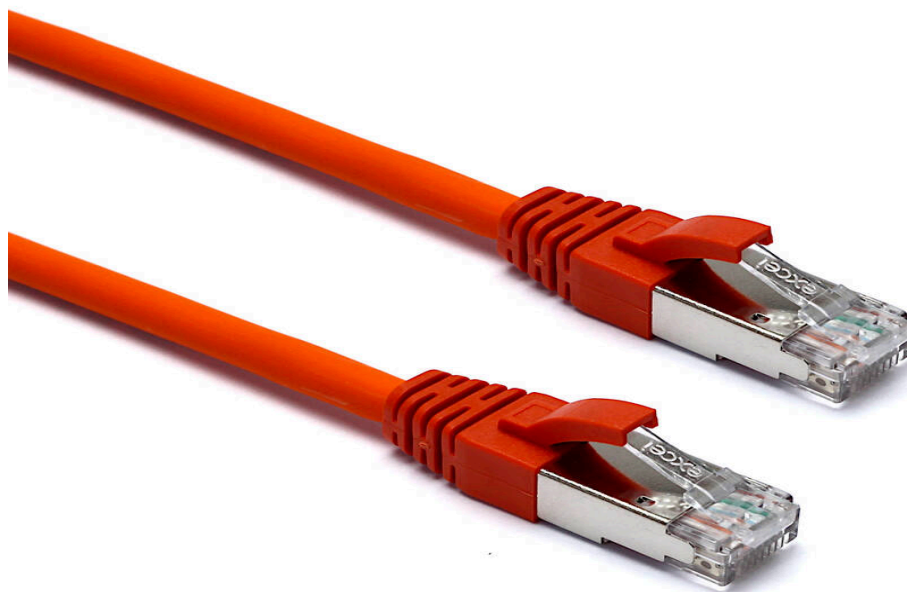


Excel Cat6A Patch Lead S/FTP Shielded LSOH Blade Booted 215 mm Orange (10-Pack)

excel
without compromise.

Part Code: 101-195-10

sales@excel-networking.com
excel-networking.com



Main Features

- / Panel-to-switch length
- / Suitable for 10 Gigabit 10GBase-T, POE++ applications
- / Blade style moulded strain relief boot with clip protector
- / Specified to 500MHz
- / Individual foil screen over each pair
- / Choice of length and colour

Product Overview

Excel Category 6A (Augmented Category 6) patch leads take the performance capabilities of copper infrastructure to new levels. Designed to the current ISO and EIA/TIA standards for Class Ea augmented Category 6A performance these products are intended to deliver reliable, high network performance including support of emerging applications such as 10GBase-T, 10 Gigabit Ethernet.

Each Excel Category 6A patch lead consists of 4 twisted pairs of 26AWG stranded copper wires, an aluminium/polyester foil tape provides an individual screen for each pair. These pairs are then cabled together, with different lay lengths to ensure optimum performance. Staggered pin RJ45 Screened plugs, terminate the cable, and each lead is fitted with colour coded slimline moulded boots, suitable for use in high density router or switch blades.

Excel Cat6A Patch Lead S/FTP Shielded LSOH Blade Booted 215 mm Orange (10-Pack)

Part Code: 101-195-10

sales@excel-networking.com
excel-networking.com

Product Specifications

Feature	Values
Cable type	S/FTP
Category	6A (IEC)
Length	0.215 m
Type of connector connection 1	RJ45 8(8)
Type of connector connection 2	RJ45 8(8)
Outer sheath colour	Orange
Strain relief boot	Moulded-on
Lockable	no
Strain relief boot colour	Orange
Flame retardant version	yes
Cable construction	1x4
AWG-size	26
Pin assignment	1:1

Excel Cat6A Patch Lead S/FTP Shielded LSOH Blade Booted 215 mm Orange (10-Pack)

Part Code: 101-195-10

sales@excel-networking.com
excel-networking.com

Product drawing



Standards

Applicable standard	Detail
ISO/IEC 11801-1:2017	Information technology - Generic cabling for customer premises: Part 1 General Requirements
EN 50173-1:2018	Information technology. Generic cabling systems - General requirements
ANSI/TIA 568-2.D	Balanced Twisted-Pair Telecommunications Cabling and Components Standards
IEC 61156-5:2009+AMD1:2012 CSV	Multicore and symmetrical pair/quad cables for digital communications - Part 5: Symmetrical pair/quad cables with transmission characteristics up to 1 000 MHz - Horizontal floor wiring - Sectional specification
IEC 60332-1-2:2004	Tests on electric and optical fibre cables under fire conditions. Test for vertical flame propagation for a single insulated wire or cable. Procedure for 1 kW pre-mixed flame

Excel Cat6A Patch Lead S/FTP Shielded LSOH Blade Booted 215 mm Orange (10-Pack)

Part Code: 101-195-10

sales@excel-networking.com
excel-networking.com

IEC 61034-2:2005+A1:2013	Measurement of smoke density of cables burning under defined conditions – Part 2: Test procedure and requirements
Directive 2011/65/EU (RoHS II)	Restriction of the Use of Certain Hazardous Substances in Electrical and Electronic Equipment — compliant. Applies within EU member states).
Directive (EU) 2015/863 (RoHS III)	Amending Directive 2011/65/EU to add four phthalates (DEHP, BBP, DBP, DIBP) to Annex II — compliant.
Directive 2008/98/EC (WFD)	Waste Framework Directive — compliant. Implemented in the UK through the Waste (England and Wales) Regulations 2011 (SI 2011 No. 988).
ECHA SCIP Database	Compliant; product does not contain SVHCs (Substances of Very High Concern) as defined under REACH Article 33(1). Submission obligations met under EU REACH and UK REACH.
Regulation (EU) 2019/1021 (POPs)	EU Regulation on Persistent Organic Pollutants — compliant. For Great Britain, compliance is aligned with the Persistent Organic Pollutants (Amendment) (EU Exit) Regulations 2020 (SI 2020 No. 1355).
UK SI 2012 No. 3032	The Restriction of the Use of Certain Hazardous Substances in Electrical and Electronic Equipment Regulations 2012 (UK RoHS) — compliant for Great Britain. Retained EU law, as amended by the Product Safety and Metrology (Amendment etc.) (EU Exit) Regulations 2019.

Part Code Table

Part Code	Description
101-188-10	Excel Cat6A Patch Lead S/FTP Shielded LSOH Blade Booted 215 mm Grey (10-Pack)
101-189-10	Excel Cat6A Patch Lead S/FTP Shielded LSOH Blade Booted 215 mm White (10-Pack)
101-190-10	Excel Cat6A Patch Lead S/FTP Shielded LSOH Blade Booted 215 mm Yellow (10-Pack)

Excel Cat6A Patch Lead S/FTP Shielded LSOH Blade Booted 215 mm Orange (10-Pack)

Part Code: 101-195-10

sales@excel-networking.com
excel-networking.com

101-191-10	Excel Cat6A Patch Lead S/FTP Shielded LSOH Blade Booted 215 mm Black (10-Pack)
101-192-10	Excel Cat6A Patch Lead S/FTP Shielded LSOH Blade Booted 215 mm Blue (10-Pack)
101-193-10	Excel Cat6A Patch Lead S/FTP Shielded LSOH Blade Booted 215 mm Red (10-Pack)
101-194-10	Excel Cat6A Patch Lead S/FTP Shielded LSOH Blade Booted 215 mm Green (10-Pack)
101-195-10	Excel Cat6A Patch Lead S/FTP Shielded LSOH Blade Booted 215 mm Orange (10-Pack)
101-196-10	Excel Cat6A Patch Lead S/FTP Shielded LSOH Blade Booted 215 mm Violet (10-Pack)