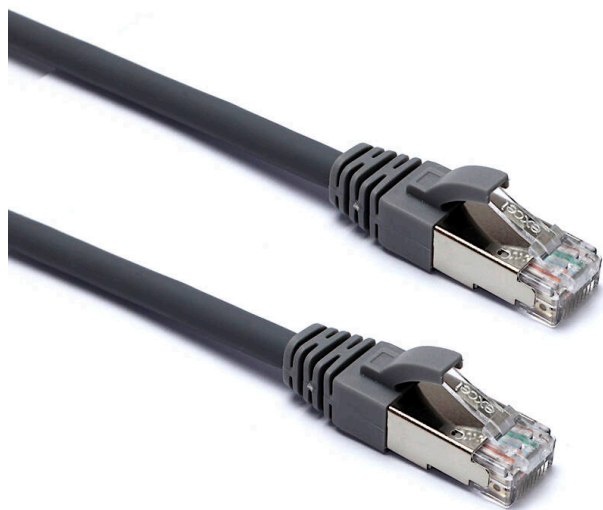


Excel Cat6 Patch Lead F/UTP Shielded LSOH Blade Booted 0.5 m Grey

Item Code: 105-002

excel
without compromise.



✕ Category 6

✕ Foil tape screen

✕ Backward compatible

✕ T568B wiring

✕ Blade style "slimline" moulded strain relief boot with clip protector

✕ LSOH outer sheath

✕ CIBSE TM65 Embodied Carbon: 2.238 kg CO2e

Product Overview

Excel Category 6 F/UTP patch leads are manufactured and tested to ISO 11801, EN 50173 & TIA/EIA 568 requirements for patch cord assemblies and provide optimum performance levels for structured cabling installations.

Product Specifications

| Feature | Values |
|--------------------------------|------------|
| Cable type | F/UTP |
| Category | 6 |
| Length | 0.5 m |
| Type of connector connection 1 | RJ45 8(8) |
| Type of connector connection 2 | RJ45 8(8) |
| Outer sheath colour | Grey |
| Strain relief boot | Moulded-on |
| Lockable | no |
| Strain relief boot colour | Grey |
| Cable construction | 1x4 |

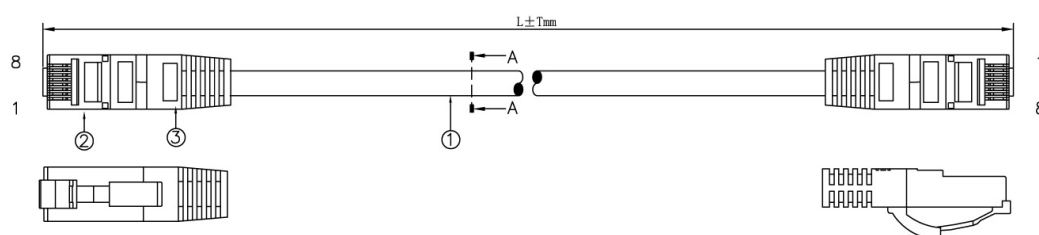
Excel Cat6 Patch Lead F/UTP Shielded LSOH Blade Booted 0.5 m Grey

Item Code: 105-002



| | |
|----------------|-----|
| AWG-size | 26 |
| Pin assignment | 1:1 |

Product drawing



Standards

| Applicable standard | Detail |
|---|--|
| ISO/IEC 11801-1:2017 | Information technology - Generic cabling for customer premises: Part 1 General Requirements |
| EN 50173-1:2018 | Information technology. Generic cabling systems - General requirements |
| ANSI/TIA 568-2.D | Balanced Twisted-Pair Telecommunications Cabling and Components Standards |
| IEC 61156-5:2009+AMD1:2012 CSV | Multicore and symmetrical pair/quad cables for digital communications - Part 5: Symmetrical pair/quad cables with transmission characteristics up to 1 000 MHz - Horizontal floor wiring - Sectional specification |
| RoHS-II/III (2011/65/EU & 2015/863): 2023 | Our products, demonstrate full adherence to the regulatory stipulations of the EU Directive 2011/65/EU (RoHS-II) and its corresponding delegated directive 2015/863 (RoHS-III). |
| WFD: 2023 | Compliant to Waste Framework Directive |
| SCIP: 2023 | Compliant - Does Not Contain Substances of Concern In articles as such or in complex objects (Products) |
| POPs (EU) No 2019/1021 | EU Regulation for the restriction of Persistent Organic Pollutants. |

Excel Cat6 Patch Lead F/UTP Shielded LSOH Blade Booted 0.5 m Grey

Item Code: 105-002



Part Number Table

| Part Number | Description |
|-------------|---|
| 105-001 | Excel Cat6 Patch Lead F/UTP Shielded LSOH Blade Booted 0.3 m Grey (10-Pack) |
| 105-002 | Excel Cat6 Patch Lead F/UTP Shielded LSOH Blade Booted 0.5 m Grey |
| 105-003 | Excel Cat6 Patch Lead F/UTP Shielded LSOH Blade Booted 1 m Grey |
| 105-004 | Excel Cat6 Patch Lead F/UTP Shielded LSOH Blade Booted 2 m Grey |
| 105-005 | Excel Cat6 Patch Lead F/UTP Shielded LSOH Blade Booted 3 m Grey |
| 105-006 | Excel Cat6 Patch Lead F/UTP Shielded LSOH Blade Booted 5 m Grey |
| 105-007 | Excel Cat6 Patch Lead F/UTP Shielded LSOH Blade Booted 10 m Grey |

Excel is a world class premium performing end to end infrastructure solution designed, Manufactured, supported and delivered without compromise.

Contact us at sales@excel-networking.com



E&OE. Excel is a registered trade name of Mayflex Holdings Ltd.