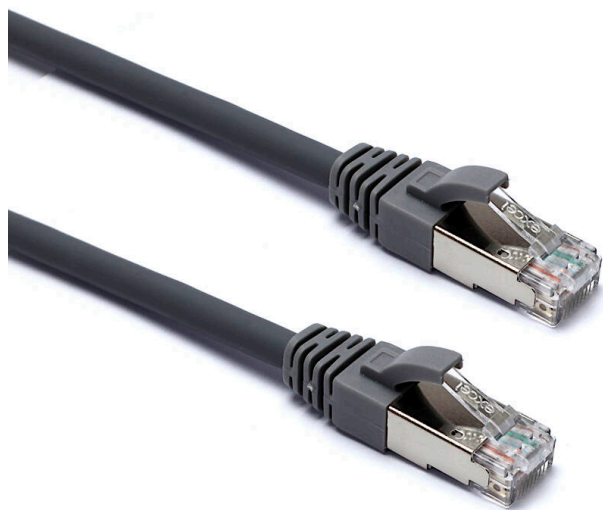


# Excel Cat6A Patch Lead S/FTP Shielded LSOH Blade Booted 2 m Grey

Item Code: 106-004

**excel**  
without compromise.



Category 6A

Screen braid outer with individual foil tape screen

Backward compatible

T568B wiring

Blade style "slimline" moulded strain relief boot with clip protector

LSOH outer sheath

CIBSE TM65 Embodied Carbon: 0.605 kg CO2e

## Product Overview

Excel Category 6A S/FTP patch leads are manufactured and tested to ISO 11801, EN 50173 & TIA/EIA 568 requirements for patch cord assemblies and provide optimum performance levels for structured cabling installations.

## Product Specifications

Feature	Values
Cable type	S/FTP
Category	6A (IEC)
Length	2 m
Type of connector connection 1	RJ45 8(8)
Type of connector connection 2	RJ45 8(8)
Outer sheath colour	Grey
Strain relief boot	Moulded-on
Lockable	no

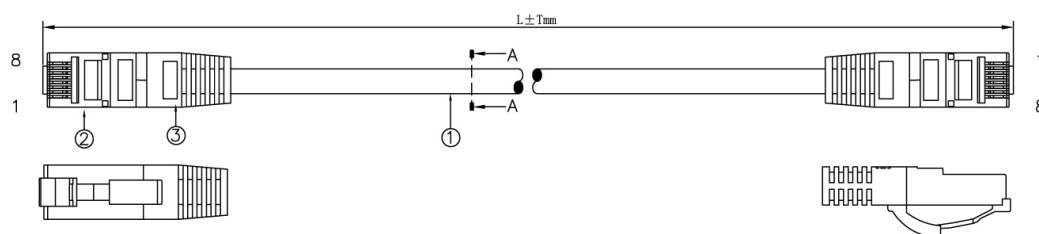
# Excel Cat6A Patch Lead S/FTP Shielded LSOH Blade Booted 2 m Grey

Item Code: 106-004

**excel**  
without compromise.

Strain relief boot colour	Grey
Flame retardant version	yes
Cable construction	1x4
AWG-size	26
Pin assignment	1:1

## Product drawing



## Standards

Applicable standard	Detail
ISO/IEC 11801-1:2017	Information technology - Generic cabling for customer premises: Part 1 General Requirements
EN 50173-1:2018	Information technology. Generic cabling systems - General requirements
ANSI/TIA 568-2.D	Balanced Twisted-Pair Telecommunications Cabling and Components Standards
IEC 61156-5:2009+AMD1:2012 CSV	Multicore and symmetrical pair/quad cables for digital communications - Part 5: Symmetrical pair/quad cables with transmission characteristics up to 1 000 MHz - Horizontal floor wiring - Sectional specification
Directive 2011/65/EU (RoHS II)	Restriction of the Use of Certain Hazardous Substances in Electrical and Electronic Equipment — compliant. Applies within EU member states).
Directive (EU) 2015/863 (RoHS III)	Amending Directive 2011/65/EU to add four phthalates (DEHP, BBP, DBP, DIBP) to Annex II — compliant.
Directive 2008/98/EC (WFD)	Waste Framework Directive — compliant. Implemented in the UK through the Waste (England and Wales) Regulations 2011 (SI 2011 No. 988).
ECHA SCIP Database	Compliant; product does not contain SVHCs (Substances of Very High Concern) as defined under REACH Article

# Excel Cat6A Patch Lead S/FTP Shielded LSOH Blade Booted 2 m Grey

Item Code: 106-004



Regulation (EU) 2019/1021 (POPs)	33(1). Submission obligations met under EU REACH and UK REACH.  EU Regulation on Persistent Organic Pollutants — compliant. For Great Britain, compliance is aligned with the Persistent Organic Pollutants (Amendment) (EU Exit) Regulations 2020 (SI 2020 No. 1355).
UK SI 2012 No. 3032	The Restriction of the Use of Certain Hazardous Substances in Electrical and Electronic Equipment Regulations 2012 (UK RoHS) — compliant for Great Britain. Retained EU law, as amended by the Product Safety and Metrology (Amendment etc.) (EU Exit) Regulations 2019.

## Part Number Table

Part Number	Description
106-001	Excel Cat6A Patch Lead S/FTP Shielded LSOH Blade Booted 0.3 m Grey (10-Pack)
106-002	Excel Cat6A Patch Lead S/FTP Shielded LSOH Blade Booted 0.5 m Grey (10-Pack)
106-003	Excel Cat6A Patch Lead S/FTP Shielded LSOH Blade Booted 1 m Grey
106-004	Excel Cat6A Patch Lead S/FTP Shielded LSOH Blade Booted 2 m Grey
106-005	Excel Cat6A Patch Lead S/FTP Shielded LSOH Blade Booted 3 m Grey
106-006	Excel Cat6A Patch Lead S/FTP Shielded LSOH Blade Booted 5 m Grey
106-007	Excel Cat6A Patch Lead S/FTP Shielded LSOH Blade Booted 10 m Grey
106-008	Excel Cat6A Patch Lead S/FTP Shielded LSOH Blade Booted 8 m Grey
106-009	Excel Cat6A Patch Lead S/FTP Shielded LSOH Blade Booted 15 m Grey
106-010	Excel Cat6A Patch Lead S/FTP Shielded LSOH Blade Booted 20 m Grey
106-020	Excel Cat6A Patch Lead S/FTP Shielded LSOH Blade Booted 30 m Blue
106-050	Excel Cat6A Patch Lead S/FTP Shielded LSOH Blade Booted 30 m Green

Excel is a world class premium performing end to end infrastructure solution designed, Manufactured, supported and delivered without compromise.

Contact us at [sales@excel-networking.com](mailto:sales@excel-networking.com)



E&OE. Excel is a registered trade name of Mayflex Holdings Ltd.