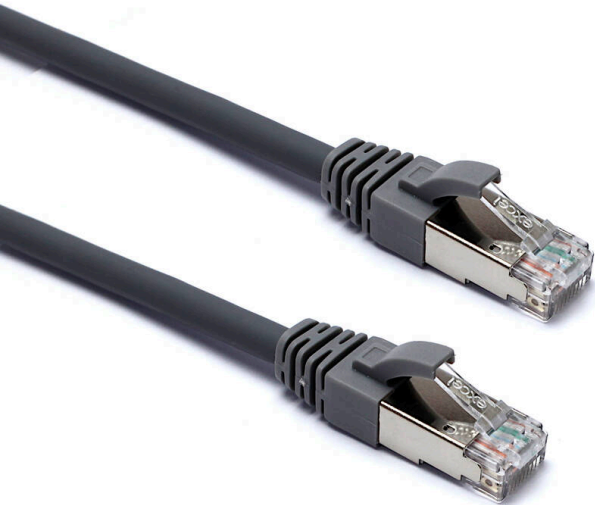


Excel Cat6A Patch Lead S/FTP Shielded LSOH Blade Booted 5 m Grey

Item Code: 106-006



- Category 6A
- Screen braid outer with individual foil tape screen
- Backward compatible
- T568B wiring
- Blade style "slimline" moulded strain relief boot with clip protector
- LSOH outer sheath
- CIBSE TM65 Embodied Carbon: 1.360 kg CO2e

Product Overview

Excel Category 6A S/FTP patch leads are manufactured and tested to ISO 11801, EN 50173 & TIA/EIA 568 requirements for patch cord assemblies and provide optimum performance levels for structured cabling installations.

Product Specifications

Feature	Values
Cable type	S/FTP
Category	6A (IEC)
Length	5 m
Type of connector connection 1	RJ45 8(8)
Type of connector connection 2	RJ45 8(8)
Outer sheath colour	Grey
Strain relief boot	Moulded-on
Lockable	no
Strain relief boot colour	Grey

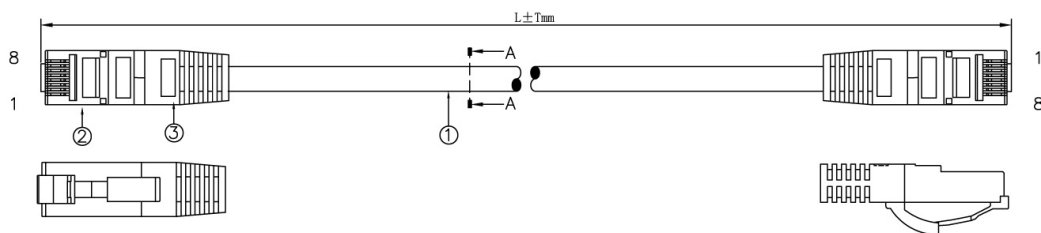
Excel Cat6A Patch Lead S/FTP Shielded LSOH Blade Booted 5 m Grey

Item Code: 106-006



Flame retardant version	yes
Cable construction	1x4
AWG-size	26
Pin assignment	1:1

Product drawing



Standards

Applicable standard	Detail
ISO/IEC 11801-1:2017	Information technology - Generic cabling for customer premises: Part 1 General Requirements
EN 50173-1:2018	Information technology. Generic cabling systems - General requirements
ANSI/TIA 568-2.D	Balanced Twisted-Pair Telecommunications Cabling and Components Standards
IEC 61156-5:2009+AMD1:2012 CSV	Multicore and symmetrical pair/quad cables for digital communications - Part 5: Symmetrical pair/quad cables with transmission characteristics up to 1 000 MHz - Horizontal floor wiring - Sectional specification
RoHS-II/-III (2011/65/EU & 2015/863): 2023	Our products, demonstrate full adherence to the regulatory stipulations of the EU Directive 2011/65/EU (RoHS-II) and its corresponding delegated directive 2015/863 (RoHS-III).
WFD: 2023	Compliant to Waste Framework Directive
SCIP: 2023	Compliant - Does Not Contain Substances of Concern In articles as such or in complex objects (Products)
POPs (EU) No 2019/1021	EU Regulation for the restriction of Persistent Organic Pollutants.

Excel Cat6A Patch Lead S/FTP Shielded LSOH Blade Booted 5 m Grey

Item Code: 106-006



Part Number Table

Part Number	Description
106-001	Excel Cat6A Patch Lead S/FTP Shielded LSOH Blade Booted 0.3 m Grey (10-Pack)
106-002	Excel Cat6A Patch Lead S/FTP Shielded LSOH Blade Booted 0.5 m Grey (10-Pack)
106-003	Excel Cat6A Patch Lead S/FTP Shielded LSOH Blade Booted 1 m Grey
106-004	Excel Cat6A Patch Lead S/FTP Shielded LSOH Blade Booted 2 m Grey
106-005	Excel Cat6A Patch Lead S/FTP Shielded LSOH Blade Booted 3 m Grey
106-006	Excel Cat6A Patch Lead S/FTP Shielded LSOH Blade Booted 5 m Grey
106-007	Excel Cat6A Patch Lead S/FTP Shielded LSOH Blade Booted 10 m Grey
106-008	Excel Cat6A Patch Lead S/FTP Shielded LSOH Blade Booted 8 m Grey
106-009	Excel Cat6A Patch Lead S/FTP Shielded LSOH Blade Booted 15 m Grey
106-010	Excel Cat6A Patch Lead S/FTP Shielded LSOH Blade Booted 20 m Grey

Excel is a world class premium performing end to end infrastructure solution designed, Manufactured, supported and delivered without compromise.

Contact us at sales@excel-networking.com



E&OE. Excel is a registered trade name of Mayflex Holdings Ltd.