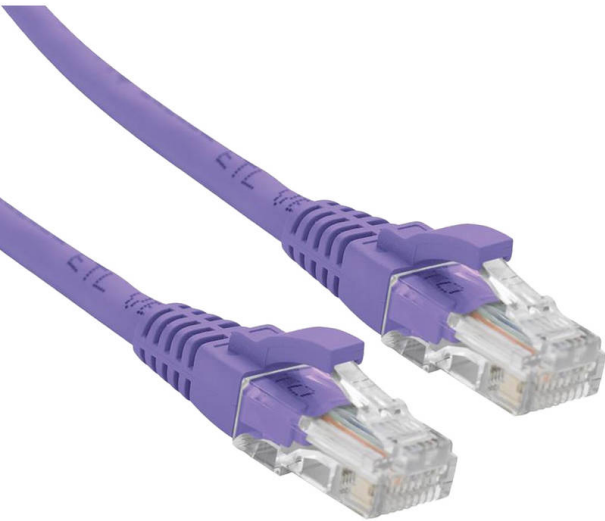


# Excel Cat6 Solid Patch Lead U/UTP Unshielded LS0H B2ca Blade Booted 30m Violet

Item Code: 190-370



- ✕ Solid core cable - ideal for switch links
- ✕ Category 6
- ✕ Backward compatible
- ✕ T568B wiring
- ✕ Blade style 'slimline' moulded strain relief boot with clip protector
- ✕ Euroclass B2ca-s1a-d1-a1
- ✕ LS0H outer sheath

## Product Overview

Excel Category 6 U/UTP Solid Core patch leads are manufactured and tested to ISO 11801, EN 50173 & TIA/EIA 568 requirements for patch cord assemblies and provide optimum performance levels for structured cabling installations.

## Product Specifications

Feature	Values
Cable type	U/UTP
Category	6
Length	30 m
Type of connector connection 1	RJ45 8(8)
Type of connector connection 2	RJ45 8(8)
Outer sheath colour	Violet
Strain relief boot	Moulded-on
Lockable	no
Strain relief boot colour	Violet
Flame retardant version	yes

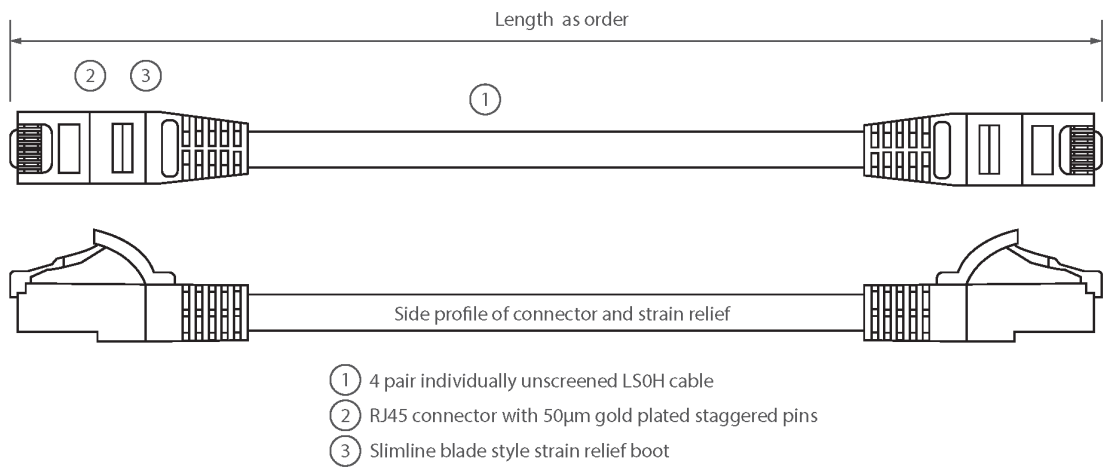
Excel Cat6 Solid Patch Lead U/UTP Unshielded LS0H  
B2ca Blade Booted 30m Violet



Item Code: 190-370

Cable construction	1x4
AWG-size	23
Pin assignment	1:1

Product drawing



Standards

Applicable standard	Detail
ISO/IEC 11801-1:2017	Information technology - Generic cabling for customer premises: Part 1 General Requirements
EN 50173-1:2011	Information technology. Generic cabling systems - General requirements
ANSI/TIA 568-2.D	Balanced Twisted-Pair Telecommunications Cabling and Components Standards
IEC 61156-5:2009+AMD1:2012 CSV	Multicore and symmetrical pair/quad cables for digital communications - Part 5: Symmetrical pair/quad cables with transmission characteristics up to 1 000 MHz - Horizontal floor wiring - Sectional specification
IEC 60332-1-2:2004	Tests on electric and optical fibre cables under fire conditions. Test for vertical flame propagation for a single insulated wire or cable. Procedure for 1 kW pre-mixed flame
EN 50575:2014 + A1:2016	Power, control and communication cables — Cables for general applications in construction works subject to reaction to fire requirements

# Excel Cat6 Solid Patch Lead U/UTP Unshielded LS0H B2ca Blade Booted 30m Violet

Item Code: 190-370



EN 50399:2011+A1:2016

Common test methods for cables under fire conditions. Heat release and smoke production measurement on cables during flame spread test. Test apparatus, procedures, results

IEC 61034-2:2005+A1:2013

Measurement of smoke density of cables burning under defined conditions – Part 2: Test procedure and requirements

## Part Number Table

Part Number	Description
100-367	Excel Cat6 Solid Patch Lead U/UTP Unshielded LS0H Blade Booted 10 m Violet
100-368	Excel Cat6 Solid Patch Lead U/UTP Unshielded LS0H Blade Booted 15 m Violet
100-369	Excel Cat6 Solid Patch Lead U/UTP Unshielded LS0H Blade Booted 20 m Violet
100-370	Excel Cat6 Solid Patch Lead U/UTP Unshielded LS0H Blade Booted 30 m Violet
190-367	Excel Cat6 Solid Patch Lead U/UTP Unshielded LS0H B2ca Blade Booted 10m Violet
190-368	Excel Cat6 Solid Patch Lead U/UTP Unshielded LS0H B2ca Blade Booted 15m Violet
190-369	Excel Cat6 Solid Patch Lead U/UTP Unshielded LS0H B2ca Blade Booted 20m Violet
190-370	Excel Cat6 Solid Patch Lead U/UTP Unshielded LS0H B2ca Blade Booted 30m Violet

Excel is a world class premium performing end to end infrastructure solution designed, Manufactured, supported and delivered without compromise.

Contact us at [sales@excel-networking.com](mailto:sales@excel-networking.com)



E&OE. Excel is a registered trade name of Mayflex Holdings Ltd.