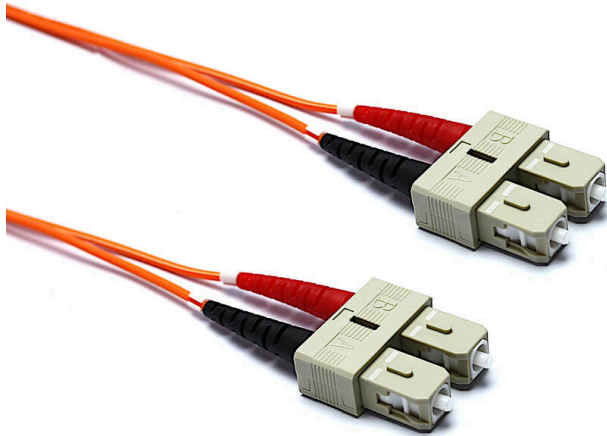


Excel Enbeam OM2 Fibre Optic Patch Lead SC-SC Multimode 50/125 DX LS0H Orange 5 m

Item Code: 200-229

excel
without compromise.



✕ 100% Optically tested, test certificate included

✕ Low loss connectors

✕ Zirconia ceramic PC ferrules

✕ Polarity changeable (Duplex connectors)

✕ Bend insensitive construction

✕ 25 Year system warranty

✕ CIBSE TM65 Embodied Carbon: 0.570 kg CO2e

Product Overview

Excel OM2 50/125 μm duplex patch leads are manufactured from the highest quality 900 μm buffer/jacket optical fibre, terminated with ceramic ferrule connectors.

Each cable has strain relief boots to prolong and maintain performance levels of the assembly, transmit and receive 'legs' of each duplex cable are identified by means of ring type cable marker fixed to each end the assembly. A short distance from these identification rings heat shrink is applied to maintain an easy to manage bonded two fibre cable, finally a label containing a unique batch number is fixed to the centre of cable for quality and traceability purposes.

Product Specifications

| Feature | Values |
|------------------------------------|-------------------|
| Fibre type | Multi mode 50/125 |
| Category | OM2 |
| Number of Cores | 2 |
| Outer diameter sheath single fibre | 3 mm |
| Cable type | Duplex |
| Length | 5 m |
| Type of connector connection 1 | SC |

Excel Enbeam OM2 Fibre Optic Patch Lead SC-SC Multimode 50/125 DX LS0H Orange 5 m

Item Code: 200-229



| | |
|--|---------|
| Type of connector connection 2 | SC |
| Outer sheath colour | Orange |
| Strain relief boot | Push-on |
| Flame retardant according to IEC 60332-1-2 | yes |
| Low smoke (acc. IEC 61034-2) | yes |

Cable specifications

| Features | Values | ST Assemblies | SC Assemblies | LC Assemblies |
|------------------------------|---------------------|-------------------------|-------------------------|--------------------------|
| Cable Construction | Duplex zip-cord | | | |
| No. of Fibres | 2 | | | |
| Cable Dimensions | | 2.8 x 5.7mm | 2.8 x 5.7mm | 2.0 x 4.0mm |
| Colour | Orange | | | |
| Strength members | Aramid Yarn | | | |
| Temperature range | -20C to +70C | | | |
| Connector Material | | Nickel plated Brass | Composite | Composite |
| Minimum bend radius (loaded) | 10 x cable diameter | | | |
| Connector Ferrule | | 2.5mm Zirconium ceramic | 2.5mm Zirconium ceramic | 1.25mm Zirconium ceramic |
| Ferrule End Face | PC Polish | | | |
| Connector Insertion Loss | Max. 0.3dB | | | |

Fibre specifications

| Features | Values |
|--------------------------------------|-------------|
| Core diameter | 50 ± 2.5µm |
| Core Non-circularity | ≤5% |
| Core-Cladding Concentricity Error | ≤1.5µm |
| Cladding diameter | 125 ± 1.0µm |
| Cladding Non-circularity | ≤1.0% |
| Primary Coating diameter | 245 ± 7µm |
| Coating-Cladding Concentricity Error | ≤10.0µm |

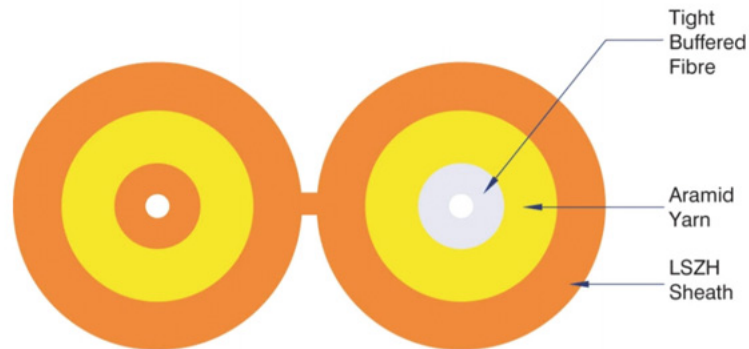
Excel Enbeam OM2 Fibre Optic Patch Lead SC-SC Multimode 50/125 DX LS0H Orange 5 m

Item Code: 200-229



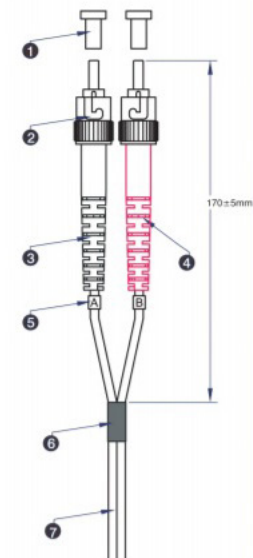
| | |
|---|----------------|
| Coating Non-circularity | ≤6.0% |
| Secondary coating diameter | 900 μm nominal |
| Max. attenuation at 850nm | 2.3dB/km |
| Max attenuation at 1300nm | 0.6dB/km |
| Refractive Index at 850nm | 1.482 |
| Refractive Index at 1300nm | 1.477 |
| Bandwidth at 850nm | 500 MHz.km |
| Bandwidth at 1300nm | 500 MHz.km |
| Numerical Aperture | 0.200 ±0.015 |
| Zero Dispersion Wavelength | 1295-1340nm |
| Macrobending Loss - 2 turns, 15mm Radius, 850nm | ≤0.10dB |
| Macrobending Loss - 2 turns, 15mm Radius, 1300nm | ≤0.30dB |
| Macrobending Loss - 2 turns, 7.5mm Radius, 850nm | ≤0.2dB |
| Macrobending Loss - 2 turns, 7.5mm Radius, 1300nm | ≤0.5dB |
| Coating Strip Force (typical) | 1.5N |
| Coating Strip Force (peak) | 1.3 - 8.9N |

Cross-section diagram



Product Schematics

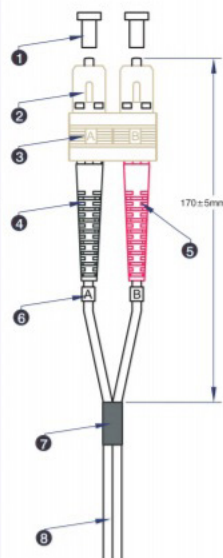
ST



- 1 ST Dust cover
- 2 ST 3.0 multimode connector*
- 3 ST 3.0 Black strain relief boot*
- 4 ST 3.0 Red strain relief boot*
- 5 Identification ring
- 6 Black heatshrink tubing
- 7 3.0mm Duplex OM1 62.5/125 LSOH Grey or Orange cable*

* 2.0 when used in hybrid cables with LC or MTRJ connectors

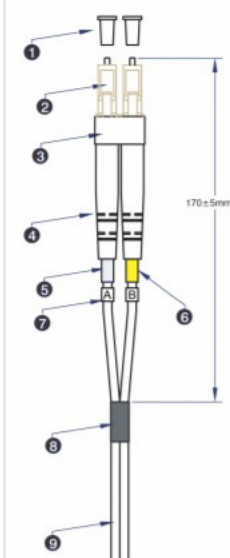
SC



- 1 SC Dust cover
- 2 SC 3.0 Beige multimode connector*
- 3 SC Beige clip
- 4 SC 3.0 Black strain relief boot*
- 5 SC 3.0 Red strain relief boot*
- 6 Identification ring
- 7 Black heatshrink tubing
- 8 3.0mm Duplex OM1 62.5/125 LSOH Grey or Orange cable*

* 2.0 when used in hybrid cables with LC or MTRJ connectors

LC



- 1 LC Dust cover
- 2 LC 2.0 multimode simplex Beige connector
- 3 LC Beige clip
- 4 LC 2.0 white boot
- 5 White heatshrink tubing
- 6 Yellow heatshrink tubing
- 7 Identification ring
- 8 Black heatshrink tubing
- 9 2.0mm Duplex OM1 62.5/125 LSOH Grey or Orange cable

Standards

| Applicable standard | Detail |
|---|---|
| BS EN 60332-1-2:2004+A11:2016 | Tests on electric and optical fibre cables under fire conditions - Test for vertical flame propagation for a single insulated wire or cable. Procedure for 1 kW pre-mixed flame |
| IEC 60793-1-1:2022 | Optical fibres - Part 1-1: Measurement methods and test procedures - General and guidance |
| IEC 60793-2:2015 | Optical fibres - Part 2: Product specifications - General |
| IEC 60793-2-10:2017 | Sectional specification for A1 multimode fibres |
| IEC 60793-1-20:2014 | Optical fibres - Part 1-20: Measurement methods and test procedures - Fibre geometry |
| IEC 60793-1-21:2001 | Optical fibres - Part 1-21: Measurement methods and test procedures - Coating geometry |
| IEC 60793-1-22:2001 | Optical fibres - Part 1-22: Measurement methods and test procedures - Length measurement |
| IEC 60793-1-30:2010 | Optical fibres - Part 1-30: Measurement methods and test procedures - Fibre proof test |
| IEC 60793-1-31:2010 | Optical fibres - Part 1-31: Measurement methods and test procedures - Tensile Strength |
| ITU G.651.1 | Characteristics of a 50/125 µm multimode graded index optical fibre cable for the optical access network |
| EN 50173-1:2018 | Information technology. Generic cabling systems - General requirements |
| EN 50173-2:2007 + A1:2010 | Information technology. Generic cabling systems - Office premises |
| IEC 61754-1:2013 | Fibre optic interconnecting devices and passive components - Fibre optic connector interfaces - Part 1: General and guidance |
| IEC 61754-2:1996 | Fibre optic connector interfaces - Part 2: Type BFOC/2,5 connector family |
| IEC 61754-4:2013 | Fibre optic interconnecting devices and passive components - Fibre optic connector interfaces - Part 4: Type SC connector family |
| IEC 61754-4-100:2015 | Fibre optic interconnecting devices and passive components - Fibre optic connector interfaces - Part 4-100: Type SC connector family - Simplified receptacle SC-PC connector interfaces |
| RoHS-II/III (2011/65/EU & 2015/863): 2023 | Our products, demonstrate full adherence to the regulatory stipulations of the EU Directive 2011/65/EU (RoHS-II) and its corresponding delegated directive 2015/863 (RoHS-III). |

Excel Enbeam OM2 Fibre Optic Patch Lead SC-SC Multimode 50/125 DX LS0H Orange 5 m

Item Code: 200-229



WFD: 2023

Compliant to Waste Framework Directive

SCIP: 2023

Compliant - Does Not Contain Substances of Concern In articles as such or in complex objects (Products)

POPs (EU) No 2019/1021

EU Regulation for the restriction of Persistent Organic Pollutants.

Part Number Table

| Part Number | Description |
|-------------|--|
| 200-093 | Excel Enbeam OM2 Fibre Optic Patch Lead LC-SC Multimode 50/125 DX LS0H Orange 10 m |
| 200-094 | Excel Enbeam OM2 Fibre Optic Patch Lead LC-SC Multimode 50/125 DX LS0H Orange 15 m |
| 200-095 | Excel Enbeam OM2 Fibre Optic Patch Lead LC-SC Multimode 50/125 DX LS0H Orange 20 m |
| 200-168 | Excel Enbeam OM2 Fibre Optic Patch Lead LC-LC Multimode 50/125 DX LS0H Orange 1 m |
| 200-169 | Excel Enbeam OM2 Fibre Optic Patch Lead LC-LC Multimode 50/125 DX LS0H Orange 2 m |
| 200-170 | Excel Enbeam OM2 Fibre Optic Patch Lead LC-LC Multimode 50/125 DX LS0H Orange 3 m |
| 200-171 | Excel Enbeam OM2 Fibre Optic Patch Lead LC-LC Multimode 50/125 DX LS0H Orange 5 m |
| 200-172 | Excel Enbeam OM2 Fibre Optic Patch Lead LC-SC Multimode 50/125 DX LS0H Orange 1 m |
| 200-173 | Excel Enbeam OM2 Fibre Optic Patch Lead LC-SC Multimode 50/125 DX LS0H Orange 2 m |
| 200-174 | Excel Enbeam OM2 Fibre Optic Patch Lead LC-SC Multimode 50/125 DX LS0H Orange 3 m |
| 200-175 | Excel Enbeam OM2 Fibre Optic Patch Lead LC-SC Multimode 50/125 DX LS0H Orange 5 m |
| 200-176 | Excel Enbeam OM2 Fibre Optic Patch Lead LC-ST Multimode 50/125 DX LS0H Orange 1 m |
| 200-177 | Excel Enbeam OM2 Fibre Optic Patch Lead LC-ST Multimode 50/125 DX LS0H Orange 2 m |
| 200-178 | Excel Enbeam OM2 Fibre Optic Patch Lead LC-ST Multimode 50/125 DX LS0H Orange 3 m |
| 200-179 | Excel Enbeam OM2 Fibre Optic Patch Lead LC-ST Multimode 50/125 DX LS0H Orange 5 m |

Excel Enbeam OM2 Fibre Optic Patch Lead SC-SC Multimode 50/125 DX LS0H Orange 5 m

Item Code: 200-229



| | |
|---------|--|
| 200-180 | Excel Enbeam OM2 Fibre Optic Patch Lead LC-ST Multimode 50/125 DX LS0H Orange 10 m |
| 200-200 | Excel Enbeam OM2 Fibre Optic Patch Lead ST-ST Multimode 50/125 DX LS0H Orange 1 m |
| 200-202 | Excel Enbeam OM2 Fibre Optic Patch Lead ST-ST Multimode 50/125 DX LS0H Orange 2 m |
| 200-204 | Excel Enbeam OM2 Fibre Optic Patch Lead ST-ST Multimode 50/125 DX LS0H Orange 3 m |
| 200-206 | Excel Enbeam OM2 Fibre Optic Patch Lead ST-ST Multimode 50/125 DX LS0H Orange 5 m |
| 200-209 | Excel Enbeam OM2 Fibre Optic Patch Lead ST-ST Multimode 50/125 DX LS0H Orange 10 m |
| 200-216 | Excel Enbeam OM2 Fibre Optic Patch Lead ST-SC Multimode 50/125 DX LS0H Orange 1 m |
| 200-218 | Excel Enbeam OM2 Fibre Optic Patch Lead ST-SC Multimode 50/125 DX LS0H Orange 2 m |
| 200-219 | Excel Enbeam OM2 Fibre Optic Patch Lead ST-SC Multimode 50/125 DX LS0H Orange 15 m |
| 200-220 | Excel Enbeam OM2 Fibre Optic Patch Lead ST-SC Multimode 50/125 DX LS0H Orange 3 m |
| 200-222 | Excel Enbeam OM2 Fibre Optic Patch Lead ST-SC Multimode 50/125 DX LS0H Orange 5 m |
| 200-224 | Excel Enbeam OM2 Fibre Optic Patch Lead SC-SC Multimode 50/125 DX LS0H Orange 1 m |
| 200-226 | Excel Enbeam OM2 Fibre Optic Patch Lead SC-SC Multimode 50/125 DX LS0H Orange 2 m |
| 200-227 | Excel Enbeam OM2 Fibre Optic Patch Lead ST-SC Multimode 50/125 DX LS0H Orange 10 m |
| 200-228 | Excel Enbeam OM2 Fibre Optic Patch Lead SC-SC Multimode 50/125 DX LS0H Orange 3 m |
| 200-229 | Excel Enbeam OM2 Fibre Optic Patch Lead SC-SC Multimode 50/125 DX LS0H Orange 5 m |
| 200-236 | Excel Enbeam OM2 Fibre Optic Patch Lead SC-SC Multimode 50/125 DX LS0H Orange 10 m |
| 200-237 | Excel Enbeam OM2 Fibre Optic Patch Lead SC-SC Multimode 50/125 DX LS0H Orange 15 m |
| 200-238 | Excel Enbeam OM2 Fibre Optic Patch Lead SC-SC Multimode 50/125 DX LS0H Orange 20 m |
| 200-265 | Excel Enbeam OM2 Fibre Optic Patch Lead LC-LC Multimode 50/125 DX LS0H Orange 10 m |

Excel Enbeam OM2 Fibre Optic Patch Lead SC-SC Multimode 50/125 DX LS0H Orange 5 m

Item Code: 200-229



| | |
|---------|---|
| 200-266 | Excel Enbeam OM2 Fibre Optic Patch Lead LC-LC Multimode 50/125 DX LS0H Orange 15 m |
| 200-267 | Excel Enbeam OM2 Fibre Optic Patch Lead LC-LC Multimode 50/125 DX LS0H Orange 20 m |
| 200-286 | Excel Enbeam OM2 Fibre Optic Patch Lead ST-ST Multimode 50/125 DX LS0H Orange 15 m |
| 200-287 | Excel Enbeam OM2 Fibre Optic Patch Lead ST-ST Multimode 50/125 DX LS0H Orange 20 m |
| 200-533 | Excel Enbeam OM2 Fibre Optic Patch Lead LC-ST Multimode 50/125 DX LS0H Orange 20 m |
| 202-171 | Excel Enbeam OM2 Fibre Optic Patch Lead LC-LC Multimode 50/125 DX LS0H Orange 0.5 m |
| 202-174 | Excel Enbeam OM2 Fibre Optic Patch Lead LC-LC Multimode 50/125 DX LS0H Orange 30 m |
| 202-178 | Excel Enbeam OM2 Fibre Optic Patch Lead LC-SC Multimode 50/125 DX LS0H Orange 0.5 m |
| 202-181 | Excel Enbeam OM2 Fibre Optic Patch Lead LC-SC Multimode 50/125 DX LS0H Orange 30 m |
| 202-184 | Excel Enbeam OM2 Fibre Optic Patch Lead LC-ST Multimode 50/125 DX LS0H Orange 0.5 m |
| 202-191 | Excel Enbeam OM2 Fibre Optic Patch Lead SC-SC Multimode 50/125 DX LS0H Orange 0.5 m |
| 202-194 | Excel Enbeam OM2 Fibre Optic Patch Lead SC-SC Multimode 50/125 DX LS0H Orange 30 m |
| 202-197 | Excel Enbeam OM2 Fibre Optic Patch Lead ST-ST Multimode 50/125 DX LS0H Orange 0.5 m |

Excel is a world class premium performing end to end infrastructure solution designed, Manufactured, supported and delivered without compromise.

Contact us at sales@excel-networking.com



E&OE. Excel is a registered trade name of Mayflex Holdings Ltd.