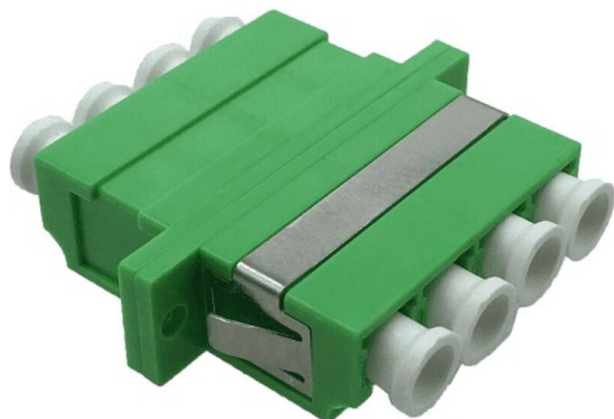


Excel Enbeam LC/APC Quad OS2 Singlemode Flanged Adaptor Green (6-Pack)

Item Code: 200-357-06



✕ 25 year system warranty

✕ Singlemode & Multimode

✕ Dust caps included

✕ SC, LC versions

✕ Plastic free packaging

Product Overview

Excel Enbeam fibre optic adaptors have been designed to present a range of optic fibre connectors. The adaptors are constructed to allow fitting in the bulkheads with screws. The housings are manufactured from a range of plastics and metals selected to provide the optimum performance.

Product Specifications

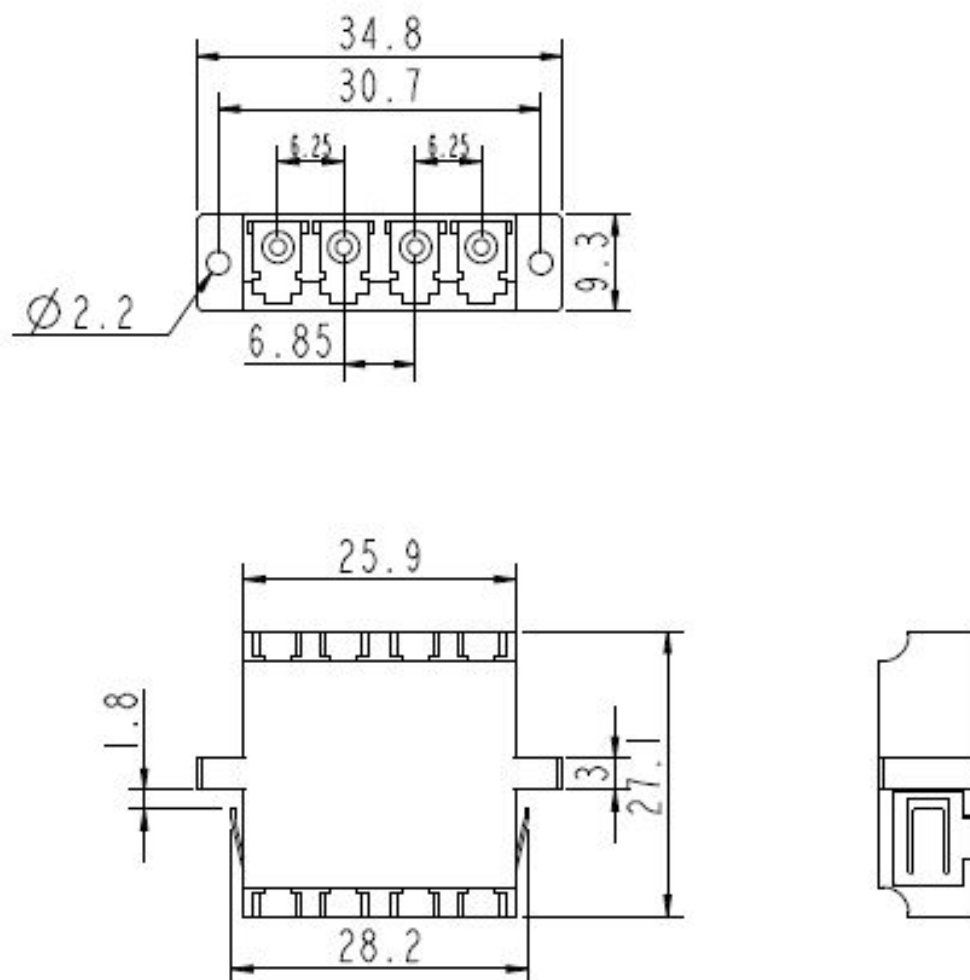
Feature	Values
Suitable for type of fibre	Single mode
Type of connector connection 1	LC-Quad
Type of connector connection 2	LC-Quad
Material housing	Plastic
Type of fastening	Screw
APC-type	yes

Excel Enbeam LC/APC Quad OS2 Singlemode Flanged Adaptor Green (6-Pack)

Item Code: 200-357-06

excel
without compromise.

Product drawing



Additional specifications

Features	Values
Insertion Loss	< 0.2 dB
Durability (500 Mating)	0.2 dB Max Increase
Operating Temperature	-40°C to +80°C
Retention Force	200 - 600 grams

Excel Enbeam LC/APC Quad OS2 Singlemode Flanged Adaptor Green (6-Pack)

Item Code: 200-357-06



Standards

Applicable standard	Detail
IEC 61300-2-22	Fibre optic interconnecting devices and passive components - Basic test and measurement procedures Change of temperature
IEC 61300-3-4:2012	Fibre optic interconnecting devices and passive components - Basic test and measurement procedures Attenuation
IEC 61300-2-2	Fibre optic interconnecting devices and passive components - Basic test and measurement procedures Mating durability
IEC 61754-20:2012	Fibre optic interconnecting devices and passive components - Fibre optic connector interfaces - Part 20: Type LC connector family
RoHS-II/III (2011/65/EU & 2015/863): 2023	Our products, demonstrate full adherence to the regulatory stipulations of the EU Directive 2011/65/EU (RoHS-II) and its corresponding delegated directive 2015/863 (RoHS-III).
WFD: 2023	Compliant to Waste Framework Directive
SCIP: 2023	Compliant - Does Not Contain Substances of Concern In articles as such or in complex objects (Products)
POPs (EU) No 2019/1021	EU Regulation for the restriction of Persistent Organic Pollutants.

Part Number Table

Part Number	Description
200-357-06	Excel Enbeam LC/APC Quad OS2 Singlemode Flanged Adaptor Green (6-Pack)

Excel is a world class premium performing end to end infrastructure solution designed, Manufactured, supported and delivered without compromise.

Contact us at sales@excel-networking.com



E&OE. Excel is a registered trade name of Mayflex Holdings Ltd.