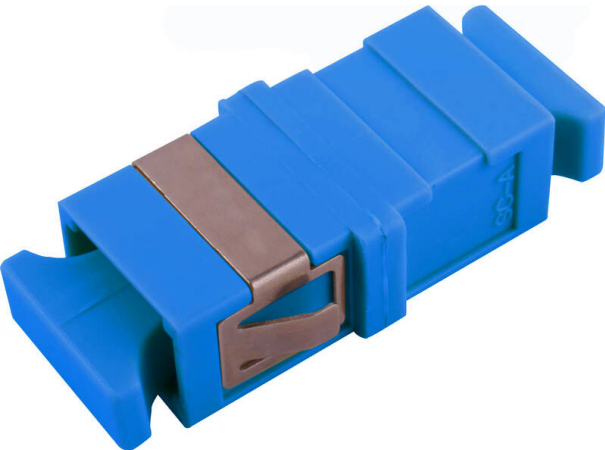


Excel Enbeam SC Simplex OS2 Singlemode Flangeless Adaptor Blue (6-Pack)

Item Code: 200-394-06



- ✕ 25 Year system warranty
- ✕ Available in Singlemode & Multimode
- ✕ Dust Caps Included
- ✕ SC, LC versions
- ✕ Flangeless
- ✕ CIBSE TM65 Embodied Carbon: 0.136 kg CO2e

Product Overview

Excel Enbeam fibre optic flangeless adaptors have been designed to present a range of optic fibre connectors. The flangeless adaptors are constructed to allow fitting in the bulkheads without the need for screws or nuts. The housings are manufactured from a range of plastics and metals selected to provide the optimum performance.

Product Specifications

Feature	Values
Suitable for type of fibre	Single mode
Type of connector connection 1	SC
Type of connector connection 2	SC
Material housing	Plastic
Type of fastening	Engage (snap)
Colour	Blue
APC-type	no

Excel Enbeam SC Simplex OS2 Singlemode Flangeless Adaptor Blue (6-Pack)

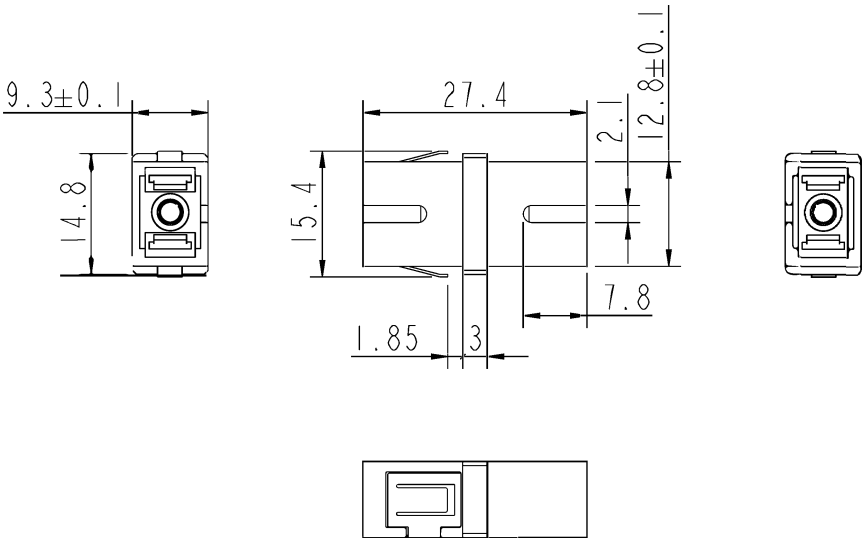
Item Code: 200-394-06



Additional specifications

Features	Values
Insertion Loss	< 0.2 dB
Durability (500 Mating)	0.2 dB Max Increase
Operating Temperature	-40°C to +80°C
Retention Force	200 – 600 grams

Product drawing



Standards

Applicable standard	Detail
RoHS-II/-III (2011/65/EU & 2015/863): 2023	Our products, demonstrate full adherence to the regulatory stipulations of the EU Directive 2011/65/EU (RoHS-II) and its corresponding delegated directive 2015/863 (RoHS-III).
IEC 61754-1:2013	Fibre optic interconnecting devices and passive components - Fibre optic connector interfaces - Part 1: General and guidance
WFD: 2023	Compliant to Waste Framework Directive
SCIP: 2023	Compliant - Does Not Contain Substances of Concern In articles as such or in complex objects (Products)

Excel Enbeam SC Simplex OS2 Singlemode
Flangeless Adaptor Blue (6-Pack)

Item Code: 200-394-06



POPs (EU) No 2019/1021

EU Regulation for the restriction of Persistent Organic
Pollutants.

Part Number Table

Part Number	Description
200-394-06	Excel Enbeam SC Simplex OS2 Singlemode Flangeless Adaptor Blue (6-Pack)

Excel is a world class premium performing end to end infrastructure solution designed,
Manufactured, supported and delivered without compromise.

Contact us at sales@excel-networking.com



E&OE. Excel is a registered trade name of Mayflex Holdings Ltd.