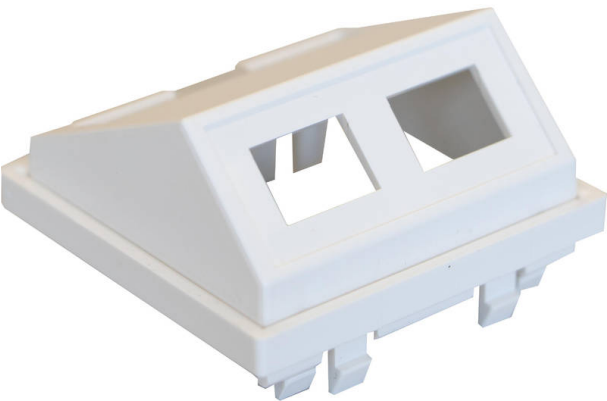


Excel Enbeam Unloaded SC Simplex/LC Duplex Angled Module

Item Code: 200-438



✕ Fits 45mm and 50mm Excel aperture faceplates

✕ UL94V- 0

✕ Built in labelling system

✕ Angled

✕ Accepts Flangeless SC Simplex and LC Duplex adaptors only

Product Overview

The Excel angled fibre modules have been designed in a way that they can be fitted into standard Excel faceplates with a 45mm or 50mm aperture. This is achieved by the fitting or removal of the outer collar of the module. Both SC Simplex and SC Duplex variations are available.

Product Specifications

Feature	Values
Number of units	2
Mounting direction	Horizontal
Number of units horizontal	2
Number of units vertical	1
Flush-mounted installation	yes
Suitable for floor box	yes
Material	Thermoplastic
Colour	White
RAL-number (akin)	9003
Type of fastening	Screw mounting
Width	50 mm
Height	50 mm
Depth	23.4 mm
Aperture width	12.9 mm

Excel Enbeam Unloaded SC Simplex/LC Duplex
Angled Module

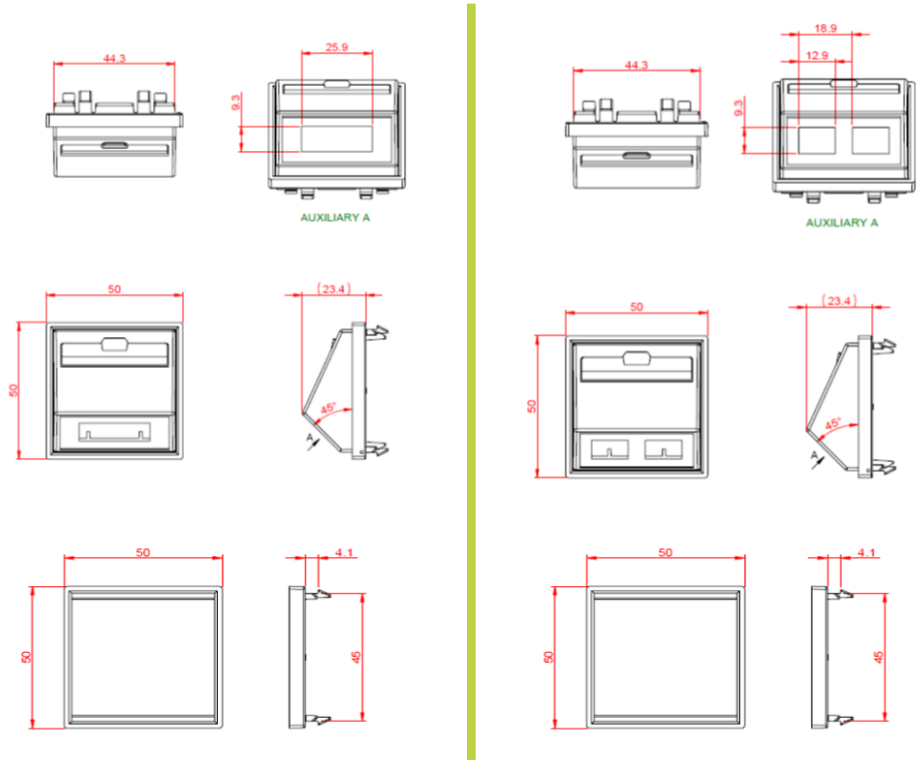
Item Code: 200-438



Aperture height

9.3 mm

Product drawings



Standards

Applicable standard	Detail
RoHS-II/-III (2011/65/EU & 2015/863): 2023	Our products, demonstrate full adherence to the regulatory stipulations of the EU Directive 2011/65/EU (RoHS-II) and its corresponding delegated directive 2015/863 (RoHS-III).
IEC 61754-1:2013	Fibre optic interconnecting devices and passive components - Fibre optic connector interfaces - Part 1: General and guidance
ISO/IEC 11801-1:2017	Information technology - Generic cabling for customer premises: Part 1 General Requirements
EN 50173-1:2018	Information technology. Generic cabling systems - General requirements
WFD: 2023	Compliant to Waste Framework Directive
SCIP: 2023	Compliant - Does Not Contain Substances of Concern In

Excel Enbeam Unloaded SC Simplex/LC Duplex
Angled Module

Item Code: 200-438



	articles as such or in complex objects (Products)
POPs (EU) No 2019/1021	EU Regulation for the restriction of Persistent Organic Pollutants.

Part Number Table

Part Number	Description
200-438	Excel Enbeam Unloaded SC Simplex/LC Duplex Angled Module
200-439	Excel Enbeam Unloaded SC Duplex/LC Quad Angled Module

Excel is a world class premium performing end to end infrastructure solution designed, Manufactured, supported and delivered without compromise.

Contact us at sales@excel-networking.com



E&OE. Excel is a registered trade name of Mayflex Holdings Ltd.