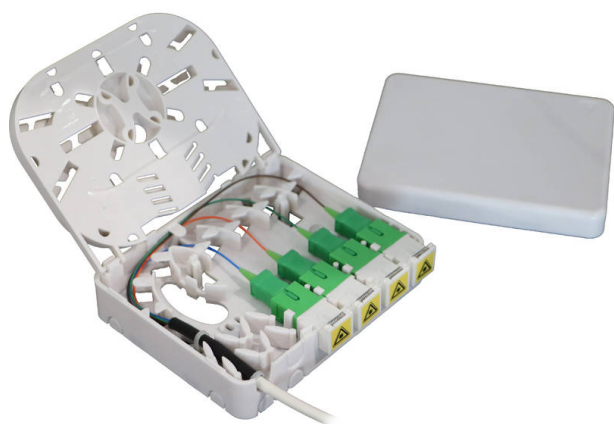


# Excel Enbeam FTTx 4 Port SC Outlet with 30 m Drop Cable

Item Code: 200-449-30

**excel**  
without compromise.



✕ Hinged Splice Tray holds up to 8 heatshrink splice protectors

✕ Multiple cable entry points

✕ Fixing hardware included

✕ Loaded with 4 X SCA Shuttered adapters

✕ Pre terminated with 4 core Cca drop cable

## Product Overview

The Excel Enbeam FTTx Surface mount box has been designed for applications such as Fibre to the Home or Fibre to the Desk. This Wall outlet can also be fitted with a DIN rail mounting plate for installations requiring Din mounting capability. Pre terminate with a 4 core 250 Micron Cca,s1a,d0,a1 drop cable 30 m in length terminated one end with 4 x SC APC connectors and open at the other, allows quick installation within the customer premises.

## Product Specifications

Feature	Values
Surface mounted	yes
Type of connector	SC/APC simplex
With couplers	yes
Suitable for number of couplers	4
Suitable for type of fibre	Single mode
Width	100 mm
Height	80.6 mm
Depth	29.5 mm

# Excel Enbeam FTTx 4 Port SC Outlet with 30 m Drop Cable

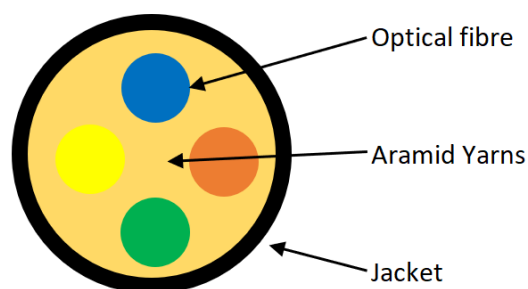
Item Code: 200-449-30



## Additional specifications

Features	Values
Capacity	4 Fibre
Material	ABS Plastic
Colour	White
Operating Temperature	-20 to +85 °C
Drop Cable	
Cable Diameter	3mm
Fibre type	9/125 G657-A2
Number of cores	4
Core size	250um
Colour	RAL 9010
Operating temperature	-20°C ~ +70°C
Reaction-to-fire class according to EN 13501-6	B2ca
Smoke development class according to EN 13501-6	s1a
Euro class flaming droplets/particles according to EN 13501-6	d0
Euro class acidity according to EN 13501-6	a1

## Cross-section view (drop cable)



## Standards

Applicable standard	Detail
RoHS-II/-III (2011/65/EU & 2015/863): 2023	Our products, demonstrate full adherence to the regulatory stipulations of the EU Directive 2011/65/EU (RoHS-II) and its corresponding delegated directive 2015/863 (RoHS-III).
IEC 61754-1:2013	Fibre optic interconnecting devices and passive components - Fibre optic connector interfaces - Part 1: General and guidance
ISO/IEC 11801-1:2017	Information technology - Generic cabling for customer premises: Part 1 General Requirements
EN 50173-1:2018	Information technology. Generic cabling systems - General requirements
UL-94-V-0	Burning stops within 10 seconds after two applications of ten seconds each of a flame to a test bar. NO flaming drips are allowed.
WFD: 2023	Compliant to Waste Framework Directive
SCIP: 2023	Compliant - Does Not Contain Substances of Concern In articles as such or in complex objects (Products)
POPs (EU) No 2019/1021	EU Regulation for the restriction of Persistent Organic Pollutants.

# Excel Enbeam FTTx 4 Port SC Outlet with 30 m Drop Cable

Item Code: 200-449-30



## Part Number Table

Part Number	Description
200-449-30	Excel Enbeam FTTx 4 Port SC Outlet with 30 m Drop Cable
200-449-50	Excel Enbeam FTTx 4 Port SC Outlet with 50 m Drop Cable
200-449-70	Excel Enbeam FTTx 4 Port SC Outlet with 70 m Drop Cable

Excel is a world class premium performing end to end infrastructure solution designed, Manufactured, supported and delivered without compromise.

Contact us at [sales@excel-networking.com](mailto:sales@excel-networking.com)



E&OE. Excel is a registered trade name of Mayflex Holdings Ltd.