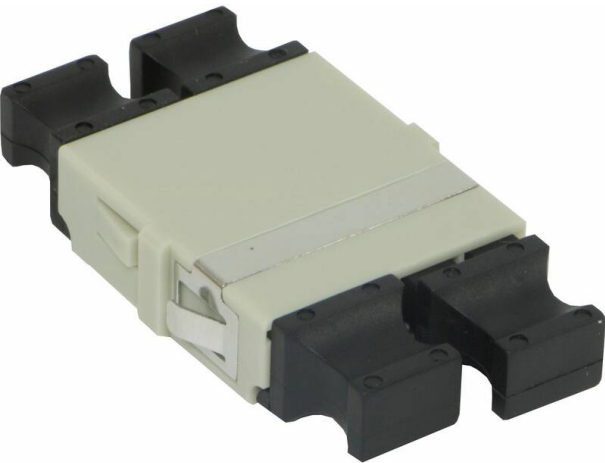


# Excel Enbeam LC Quad OM1/OM2 Multimode Flangeless Adaptor Beige (6-Pack)

Item Code: 200-579-06



- ✕ 25 Year system warranty
- ✕ Available in Singlemode & Multimode
- ✕ Dust caps included
- ✕ SC, LC versions
- ✕ Flangeless
- ✕ CIBSE TM65 Embodied Carbon: 0.570 kg CO2e

## Product Overview

Excel Enbeam fibre optic flangeless adaptors have been designed to present a range of optic fibre connectors. The flangeless adaptors are constructed to allow fitting in the bulkheads without the need for screws or nuts. The housings are manufactured from a range of plastics and metals selected to provide the optimum performance.

## Product Specifications

Feature	Values
Suitable for type of fibre	Multi mode
Type of connector connection 1	LC-Quad
Type of connector connection 2	LC-Quad
Material housing	Plastic
Colour	Beige
APC-type	no

# Excel Enbeam LC Quad OM1/OM2 Multimode Flangeless Adaptor Beige (6-Pack)

Item Code: 200-579-06



## Additional specifications

Features	Values
Insertion Loss	< 0.2 dB
Durability (500 Mating)	0.2 dB Max Increase
Operating Temperature	-40°C to +80°C
Retention Force	200 – 600 grams

## Standards

Applicable standard	Detail
IEC 61300-2-22	Fibre optic interconnecting devices and passive components - Basic test and measurement procedures Change of temperature
IEC 61300-3-4:2012	Fibre optic interconnecting devices and passive components - Basic test and measurement procedures Attenuation
IEC 61300-2-2	Fibre optic interconnecting devices and passive components - Basic test and measurement procedures Mating durability
IEC 61754-20:2012	Fibre optic interconnecting devices and passive components - Fibre optic connector interfaces - Part 20: Type LC connector family
RoHS-II/-III (2011/65/EU & 2015/863): 2023	Our products, demonstrate full adherence to the regulatory stipulations of the EU Directive 2011/65/EU (RoHS-II) and its corresponding delegated directive 2015/863 (RoHS-III).
WFD: 2023	Compliant to Waste Framework Directive
SCIP: 2023	Compliant - Does Not Contain Substances of Concern In articles as such or in complex objects (Products)
POPs (EU) No 2019/1021	EU Regulation for the restriction of Persistent Organic Pollutants.

## Part Number Table

Part Number	Description
200-359-06	Excel Enbeam LC/APC Duplex OS2 Singlemode Flangeless Adaptor Green (6-Pack)
200-360-06	Excel Enbeam LC Duplex OM1/OM2 Multimode Flangeless Adaptor Beige

# Excel Enbeam LC Quad OM1/OM2 Multimode Flangeless Adaptor Beige (6-Pack)

Item Code: 200-579-06



(6-Pack)	
200-362-06	Excel Enbeam LC Duplex OS2 Singlemode Flangeless Adaptor Blue (6-Pack)
200-579-06	Excel Enbeam LC Quad OM1/OM2 Multimode Flangeless Adaptor Beige (6-Pack)
200-580-06	Excel Enbeam LC Quad OS2 Singlemode Flangeless Adaptor Blue (6-Pack)
201-139-06	Excel Enbeam SC Duplex OM4 Multimode Flangeless Adaptor Violet (6-Pack)
201-141-06	Excel Enbeam LC Quad OM4 Multimode Flangeless Adaptor Violet (6-Pack)
201-142-06	Excel Enbeam LC Quad OM3 Multimode Flangeless Adaptor Aqua (6-Pack)

Excel is a world class premium performing end to end infrastructure solution designed, Manufactured, supported and delivered without compromise.

Contact us at [sales@excel-networking.com](mailto:sales@excel-networking.com)



E&OE. Excel is a registered trade name of Mayflex Holdings Ltd.