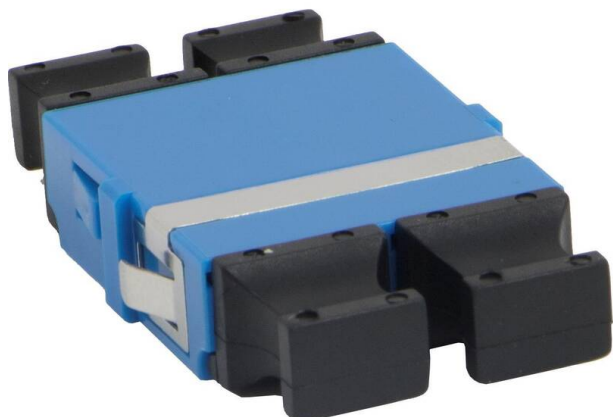


Excel Enbeam LC Quad OS2 Singlemode Flangeless Adaptor Blue (6-Pack)

Item Code: 200-580-06

excel
without compromise.



25 Year system warranty

Available in Singlemode & Multimode

Dust caps included

SC, LC versions

Flangeless

CIBSE TM65 Embodied Carbon: 0.570 kg CO2e

Product Overview

Excel Enbeam fibre optic flangeless adaptors have been designed to present a range of optic fibre connectors. The flangeless adaptors are constructed to allow fitting in the bulkheads without the need for screws or nuts. The housings are manufactured from a range of plastics and metals selected to provide the optimum performance.

Product Specifications

Feature	Values
Suitable for type of fibre	Single mode
Type of connector connection 1	LC-Quad
Type of connector connection 2	LC-Quad
Material housing	Plastic
Colour	Blue
APC-type	no

Excel Enbeam LC Quad OS2 Singlemode Flangeless Adaptor Blue (6-Pack)

Item Code: 200-580-06



Additional specifications

Features	Values
Insertion Loss	< 0.2 dB
Durability (500 Mating)	0.2 dB Max Increase
Operating Temperature	-40°C to +80°C
Retention Force	200 – 600 grams

Standards

Applicable standard	Detail
IEC 61300-2-22	Fibre optic interconnecting devices and passive components - Basic test and measurement procedures Change of temperature
IEC 61300-3-4:2012	Fibre optic interconnecting devices and passive components - Basic test and measurement procedures Attenuation
IEC 61300-2-2	Fibre optic interconnecting devices and passive components - Basic test and measurement procedures Mating durability
IEC 61754-20:2012	Fibre optic interconnecting devices and passive components - Fibre optic connector interfaces - Part 20: Type LC connector family
Directive 2011/65/EU (RoHS II)	Restriction of the Use of Certain Hazardous Substances in Electrical and Electronic Equipment — compliant. Applies within EU member states).
Directive (EU) 2015/863 (RoHS III)	Amending Directive 2011/65/EU to add four phthalates (DEHP, BBP, DBP, DIBP) to Annex II — compliant.
Directive 2008/98/EC (WFD)	Waste Framework Directive — compliant. Implemented in the UK through the Waste (England and Wales) Regulations 2011 (SI 2011 No. 988).
ECHA SCIP Database	Compliant; product does not contain SVHCs (Substances of Very High Concern) as defined under REACH Article 33(1). Submission obligations met under EU REACH and UK REACH.
Regulation (EU) 2019/1021 (POPs)	EU Regulation on Persistent Organic Pollutants — compliant. For Great Britain, compliance is aligned with the Persistent Organic Pollutants (Amendment) (EU Exit) Regulations 2020 (SI 2020 No. 1355).
UK SI 2012 No. 3032	The Restriction of the Use of Certain Hazardous Substances in Electrical and Electronic Equipment Regulations 2012 (UK RoHS) — compliant for Great

Excel Enbeam LC Quad OS2 Singlemode Flangeless Adaptor Blue (6-Pack)

Item Code: 200-580-06



Britain. Retained EU law, as amended by the Product Safety and Metrology (Amendment etc.) (EU Exit) Regulations 2019.

Part Number Table

Part Number	Description
200-359-06	Excel Enbeam LC/APC Duplex OS2 Singlemode Flangeless Adaptor Green (6-Pack)
200-360-06	Excel Enbeam LC Duplex OM1/OM2 Multimode Flangeless Adaptor Beige (6-Pack)
200-362-06	Excel Enbeam LC Duplex OS2 Singlemode Flangeless Adaptor Blue (6-Pack)
200-579-06	Excel Enbeam LC Quad OM1/OM2 Multimode Flangeless Adaptor Beige (6-Pack)
200-580-06	Excel Enbeam LC Quad OS2 Singlemode Flangeless Adaptor Blue (6-Pack)
201-139-06	Excel Enbeam SC Duplex OM4 Multimode Flangeless Adaptor Violet (6-Pack)
201-141-06	Excel Enbeam LC Quad OM4 Multimode Flangeless Adaptor Violet (6-Pack)
201-142-06	Excel Enbeam LC Quad OM3 Multimode Flangeless Adaptor Aqua (6-Pack)

Excel is a world class premium performing end to end infrastructure solution designed, Manufactured, supported and delivered without compromise.

Contact us at sales@excel-networking.com



E&OE. Excel is a registered trade name of Mayflex Holdings Ltd.