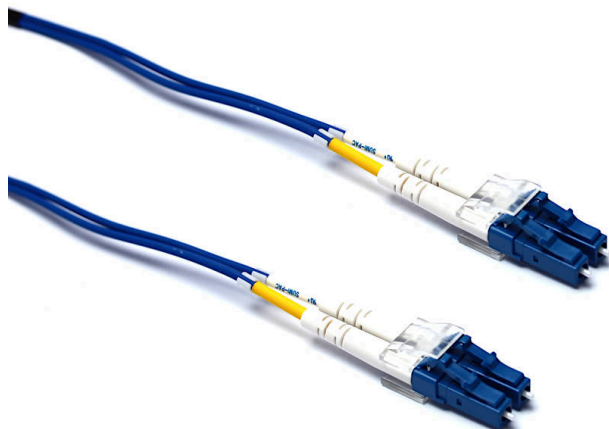


# Excel Enbeam OS2 Fibre Optic Patch Lead G.657 LC-LC Singlemode 9/125 DX LS0H Blue 3 m

Item Code: 200-965

**excel**  
without compromise.



✕ G657 Bend insensitive fibre

✕ 2.0 mm cable

✕ Blue outer sheath

✕ 25 Year system warranty

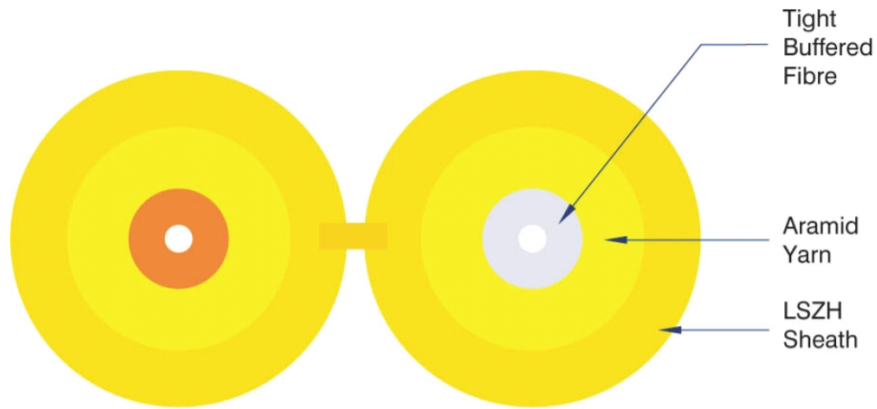
## Product Overview

The Enbeam range of patch cords are constructed from high quality connectors and G657 bend intensive 9/125 µm OS2 grade cable. Each cable has a short strain relief boot and is supplied with atest report detailing insertion loss. All the patch cords come with a blue outer sheath and are individually packaged and labelled.

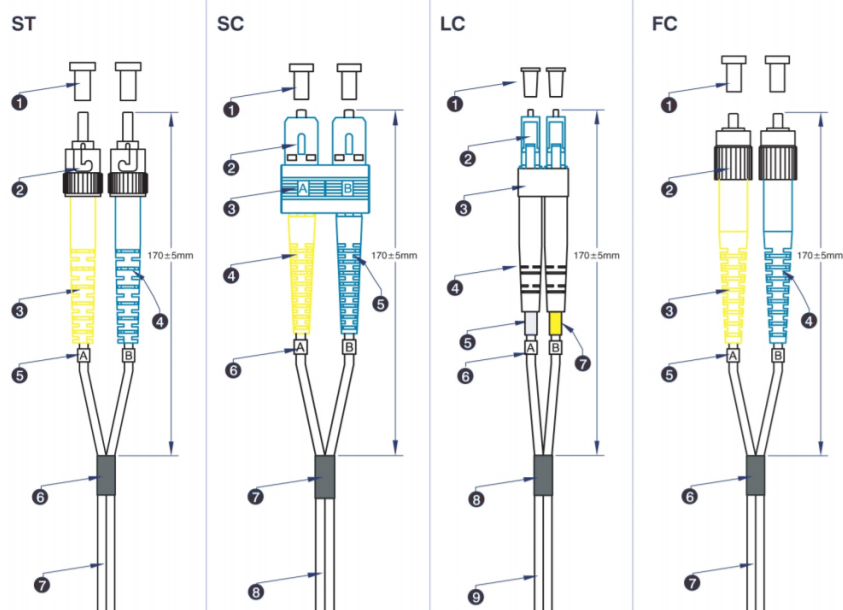
## Product Specifications

Feature	Values
Fibre type	Single mode
Category	OS2
Number of Cores	2
Outer diameter sheath single fibre	2 mm
Cable type	Duplex
Length	3 m
Type of connector connection 1	LC
Type of connector connection 2	LC
Outer sheath colour	Blue
Strain relief boot	Push-on
Flame retardant according to IEC 60332-1-2	yes
Low smoke (acc. IEC 61034-2)	yes

### Cross-section diagram



### Product drawing



## Standards

Applicable standard	Detail
BS EN 60332-1-2:2004+A11:2016	Tests on electric and optical fibre cables under fire conditions - Test for vertical flame propagation for a single insulated wire or cable. Procedure for 1 kW pre-mixed flame
IEC 60793-1-1:2022	Optical fibres - Part 1-1: Measurement methods and test procedures - General and guidance
IEC 60793-2:2015	Optical fibres - Part 2: Product specifications - General
IEC 60793-2-10:2017	Sectional specification for A1 multimode fibres
IEC 60793-1-20:2014	Optical fibres - Part 1-20: Measurement methods and test procedures - Fibre geometry
IEC 60793-1-21:2001	Optical fibres - Part 1-21: Measurement methods and test procedures - Coating geometry
IEC 60793-1-22:2001	Optical fibres - Part 1-22: Measurement methods and test procedures - Length measurement
IEC 60793-1-30:2010	Optical fibres - Part 1-30: Measurement methods and test procedures - Fibre proof test
IEC 60793-1-31:2010	Optical fibres - Part 1-31: Measurement methods and test procedures - Tensile Strength
ITU-T G.652:2016	Characteristics of a single-mode optical fibre and cable
ITU-T G.657:2016	Characteristics of a bending-loss insensitive single-mode optical fibre and cable
EN 50173-1:2018	Information technology. Generic cabling systems - General requirements
EN 50173-2:2007 + A1:2010	Information technology. Generic cabling systems - Office premises
IEC 61754-1:2013	Fibre optic interconnecting devices and passive components - Fibre optic connector interfaces - Part 1: General and guidance
IEC 61754-2:1996	Fibre optic connector interfaces - Part 2: Type BFOC/2,5 connector family
IEC 61754-4:2013	Fibre optic interconnecting devices and passive components - Fibre optic connector interfaces - Part 4: Type SC connector family
IEC 61754-4-100:2015	Fibre optic interconnecting devices and passive components - Fibre optic connector interfaces - Part 4-100: Type SC connector family - Simplified receptacle SC-PC connector interfaces
IEC 61754-4-100:2015	Fibre optic interconnecting devices and passive components - Fibre optic connector interfaces - Part

# Excel Enbeam OS2 Fibre Optic Patch Lead G.657 LC-LC Singlemode 9/125 DX LS0H Blue 3 m

Item Code: 200-965



	4-100: Type SC connector family - Simplified receptacle SC-PC connector interfaces
ISO/IEC 11801-1:2017	Information technology - Generic cabling for customer premises: Part 1 General Requirements
RoHS-II/-III (2011/65/EU & 2015/863): 2023	Our products, demonstrate full adherence to the regulatory stipulations of the EU Directive 2011/65/EU (RoHS-II) and its corresponding delegated directive 2015/863 (RoHS-III).
WFD: 2023	Compliant to Waste Framework Directive
SCIP: 2023	Compliant - Does Not Contain Substances of Concern In articles as such or in complex objects (Products)
POPs (EU) No 2019/1021	EU Regulation for the restriction of Persistent Organic Pollutants.

## Part Number Table

Part Number	Description
200-953	Excel Enbeam OS2 Fibre Optic Patch Lead G.657 SC-SC Singlemode 9/125 DX LS0H Blue 1 m
200-954	Excel Enbeam OS2 Fibre Optic Patch Lead G.657 SC-SC Singlemode 9/125 DX LS0H Blue 2 m
200-955	Excel Enbeam OS2 Fibre Optic Patch Lead G.657 SC-SC Singlemode 9/125 DX LS0H Blue 3 m
200-956	Excel Enbeam OS2 Fibre Optic Patch Lead G.657 SC-SC Singlemode 9/125 DX LS0H Blue 5 m
200-957	Excel Enbeam OS2 Fibre Optic Patch Lead G.657 SC-SC Singlemode 9/125 DX LS0H Blue 10 m
200-958	Excel Enbeam OS2 Fibre Optic Patch Lead G.657 LC-SC Singlemode 9/125 DX LS0H Blue 1 m
200-959	Excel Enbeam OS2 Fibre Optic Patch Lead G.657 LC-SC Singlemode 9/125 DX LS0H Blue 2 m
200-960	Excel Enbeam OS2 Fibre Optic Patch Lead G.657 LC-SC Singlemode 9/125 DX LS0H Blue 3 m
200-961	Excel Enbeam OS2 Fibre Optic Patch Lead G.657 LC-SC Singlemode 9/125 DX LS0H Blue 5 m
200-962	Excel Enbeam OS2 Fibre Optic Patch Lead G.657 LC-SC Singlemode 9/125 DX LS0H Blue 10 m
200-963	Excel Enbeam OS2 Fibre Optic Patch Lead G.657 LC-LC Singlemode 9/125 DX LS0H Blue 1 m
200-964	Excel Enbeam OS2 Fibre Optic Patch Lead G.657 LC-LC Singlemode 9/125 DX

# Excel Enbeam OS2 Fibre Optic Patch Lead G.657 LC-LC Singlemode 9/125 DX LS0H Blue 3 m

Item Code: 200-965



	LS0H Blue 2 m
200-965	Excel Enbeam OS2 Fibre Optic Patch Lead G.657 LC-LC Singlemode 9/125 DX LS0H Blue 3 m
200-966	Excel Enbeam OS2 Fibre Optic Patch Lead G.657 LC-LC Singlemode 9/125 DX LS0H Blue 5 m
200-967	Excel Enbeam OS2 Fibre Optic Patch Lead G.657 LC-LC Singlemode 9/125 DX LS0H Blue 10 m

Excel is a world class premium performing end to end infrastructure solution designed, Manufactured, supported and delivered without compromise.

Contact us at [sales@excel-networking.com](mailto:sales@excel-networking.com)



E&OE. Excel is a registered trade name of Mayflex Holdings Ltd.