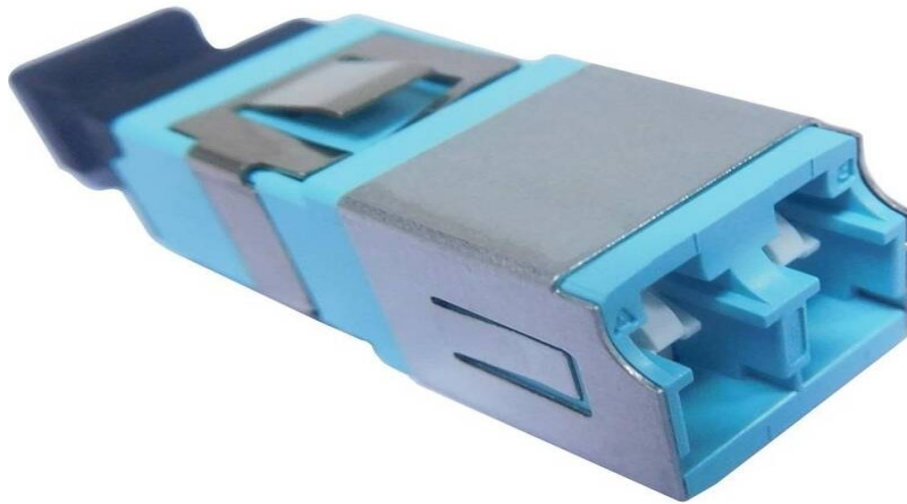


Excel Enbeam LC Duplex OM3 Multimode Shuttered Adaptor Aqua (6-Pack)

Part Code: 201-143-06

sales@excel-networking.com
excel-networking.com



Main Features

- / Internal shutter
- / Ceramic sleeve
- / 25 year system warranty
- / 100% optical test
- / Flangeless

Product Overview

Excel Enbeam fibre optic LC flangeless Shuttered adaptors have been designed and constructed to allow fitting in the bulkheads without the need for screws or nuts. The housings are manufactured from a range of plastics and metals selected to provide the optimum performance.

The shutter protects the user from the laser source, whilst also protecting the connection from dust.

Product Specifications

Excel Enbeam LC Duplex OM3 Multimode Shuttered Adaptor Aqua (6-Pack)

Part Code: 201-143-06

sales@excel-networking.com
excel-networking.com

Feature	Values
Suitable for type of fibre	Multi mode
Type of connector connection 1	LC-Duplex
Type of connector connection 2	LC-Duplex
Material housing	Plastic
Colour	Aqua
APC-type	no

Additional specifications

Features	Values
Insertion Loss	< 0.2 dB
Durability (500 Mating)	0.2 dB Max Increase
Operating Temperature	-40°C to +80°C
Retention Force	200 – 600 grams

Standards

Applicable standard	Detail
IEC 61300-2-22	Fibre optic interconnecting devices and passive components - Basic test and measurement procedures Change of temperature
IEC 61300-3-4:2012	Fibre optic interconnecting devices and passive components - Basic test and measurement procedures Attenuation
IEC 61300-2-2	Fibre optic interconnecting devices and passive

Excel Enbeam LC Duplex OM3 Multimode Shuttered Adaptor Aqua (6-Pack)

Part Code: 201-143-06

sales@excel-networking.com
excel-networking.com

	components - Basic test and measurement procedures Mating durability
IEC 61754-20:2012	Fibre optic interconnecting devices and passive components - Fibre optic connector interfaces - Part 20: Type LC connector family
Directive 2011/65/EU (RoHS II)	Restriction of the Use of Certain Hazardous Substances in Electrical and Electronic Equipment — compliant. Applies within EU member states).
Directive (EU) 2015/863 (RoHS III)	Amending Directive 2011/65/EU to add four phthalates (DEHP, BBP, DBP, DIBP) to Annex II — compliant.
Directive 2008/98/EC (WFD)	Waste Framework Directive — compliant. Implemented in the UK through the Waste (England and Wales) Regulations 2011 (SI 2011 No. 988).
ECHA SCIP Database	Compliant; product does not contain SVHCs (Substances of Very High Concern) as defined under REACH Article 33(1). Submission obligations met under EU REACH and UK REACH.
Regulation (EU) 2019/1021 (POPs)	EU Regulation on Persistent Organic Pollutants — compliant. For Great Britain, compliance is aligned with the Persistent Organic Pollutants (Amendment) (EU Exit) Regulations 2020 (SI 2020 No. 1355).
UK SI 2012 No. 3032	The Restriction of the Use of Certain Hazardous Substances in Electrical and Electronic Equipment Regulations 2012 (UK RoHS) — compliant for Great Britain. Retained EU law, as amended by the Product Safety and Metrology (Amendment etc.) (EU Exit) Regulations 2019.

Part Code Table

Part Code	Description
201-143-06	Excel Enbeam LC Duplex OM3 Multimode Shuttered Adaptor Aqua (6-Pack)
201-144-06	Excel Enbeam LC Duplex OM4 Multimode Shuttered Adaptor Violet (6-Pack)