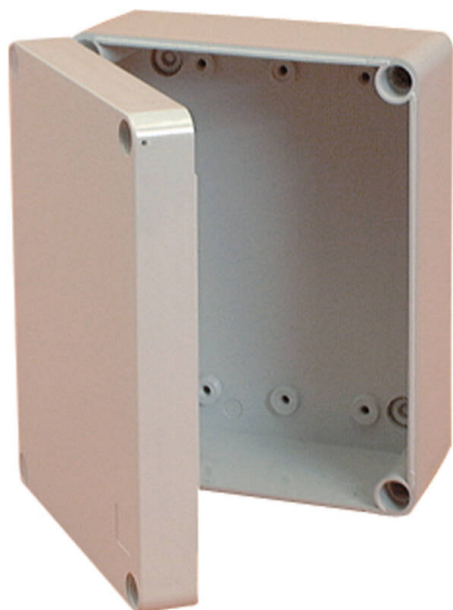


# Excel Enbeam 12 Fibre Junction Splice Box Splice Kit

Item Code: 202-040

**excel**  
without compromise.



✕ Cut-outs to suit any glanding configuration can be drilled on site

✕ Splice Mgt kit included - 2 x glands/nuts, splice bridge and curly loks

✕ 25 Year system warranty

## Product Overview

These patch boxes and splice enclosures are manufactured from impact resistant polycarbonate and provide a cost effective means of breaking out fibres from multicore cables prior to termination or splicing.

The boxes provide protection against water and dust ingress to IP55. The lids are attached using captive screws. A wide range of accessories are available.

## Product Specifications

Feature	Values
Height	220 mm
Width	170 mm
Depth	86 mm
IP-rating	IP55

## Standards

Applicable standard	Detail
RoHS-II/-III (2011/65/EU & 2015/863): 2023	Our products, demonstrate full adherence to the regulatory stipulations of the EU Directive 2011/65/EU (RoHS-II) and its corresponding delegated directive 2015/863 (RoHS-III).
WFD: 2023	Compliant to Waste Framework Directive
SCIP: 2023	Compliant - Does Not Contain Substances of Concern In articles as such or in complex objects (Products)
POPs (EU) No 2019/1021	EU Regulation for the restriction of Persistent Organic

# Excel Enbeam 12 Fibre Junction Splice Box Splice Kit

Item Code: 202-040



Pollutants.

## Part Number Table

Part Number	Description
202-040	Excel Enbeam 12 Fibre Junction Splice Box Splice Kit
202-041	Excel Enbeam 24 Fibre Junction Splice Box Lockable Splice Kit
202-120	Excel Enbeam 24 Fibre Steel Splice Box Unloaded

Excel is a world class premium performing end to end infrastructure solution designed, Manufactured, supported and delivered without compromise.

Contact us at [sales@excel-networking.com](mailto:sales@excel-networking.com)



E&OE. Excel is a registered trade name of Mayflex Holdings Ltd.