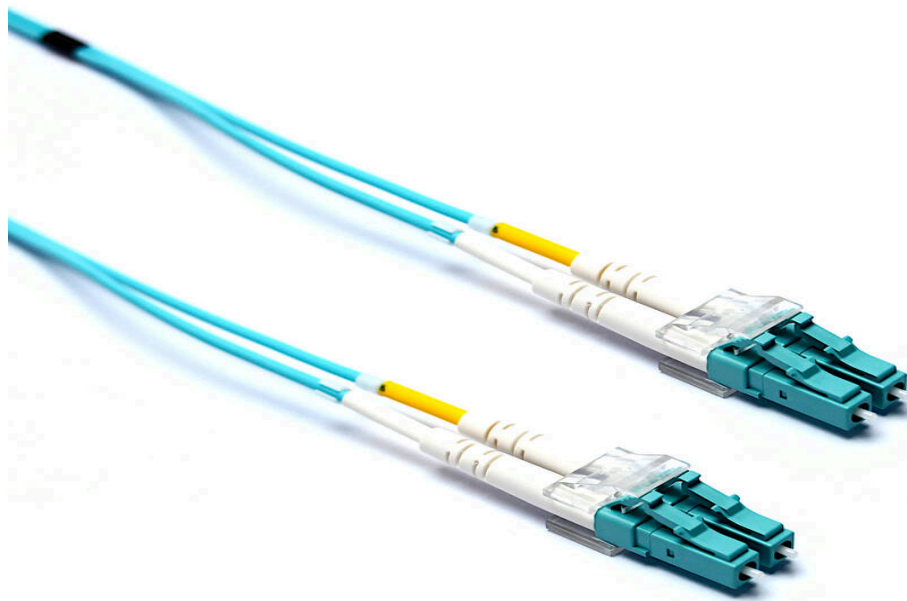


# Excel Enbeam OM4 Fibre Optic Patch Lead LC-LC Multimode 50/125 DX LS0H Aqua 10 m

Part Code: 204-323

sales@excel-networking.com  
excel-networking.com



## Main Features

- / 100% optically tested
- / Low loss connectors
- / Polarity changeable (duplex connectors)
- / Test certificate included
- / Zirconia ceramic UPC ferrules
- / Bend insensitive construction

## Product Overview

Excel OM4 50/125  $\mu\text{m}$  duplex patch leads are manufactured from the highest quality 900  $\mu\text{m}$  buffer/jacket optical fibre, terminated with ceramic ferrule connectors.

Each cable has strain relief boots to prolong and maintain performance levels of the assembly, transmit and receive "legs" of each duplex cable are identified by means of ring type cable marker fixed to each end the assembly. A short distance from these identification rings heat shrink is applied to maintain an easy to manage bonded two fibre cable, finally a label containing a unique batch number is fixed to the centre of cable for quality and traceability purposes.

# Excel Enbeam OM4 Fibre Optic Patch Lead LC-LC Multimode 50/125 DX LS0H Aqua 10 m

Part Code: 204-323

sales@excel-networking.com  
excel-networking.com

## Product Specifications

Feature	Values
Fibre type	Multi mode 50/125
Category	OM4
Number of Cores	2
Outer diameter sheath single fibre	2 mm
Cable type	Duplex
Length	10 m
Type of connector connection 1	LC
Type of connector connection 2	LC
Outer sheath colour	Aqua
Strain relief boot	Push-on
Flame retardant according to IEC 60332-1-2	yes
Low smoke (acc. IEC 61034-2)	yes

## Cable specifications

Features	Values	SC Assemblies	LC Assemblies
Cable Construction	Duplex zip-cord		
No. of Fibres	2		
Cable Dimensions		2.8 x 5.7mm	2.0 x 4.0mm
Colour	Heather Violet		
Strength members	Aramid Yarn		
Temperature range	-20C to +70C		

# Excel Enbeam OM4 Fibre Optic Patch Lead LC-LC Multimode 50/125 DX LS0H Aqua 10 m

**Part Code: 204-323**

sales@excel-networking.com  
excel-networking.com

Connector Material	Composite	Composite
Minimum bend radius (loaded)	<b>10 x cable diameter</b>	
Connector Ferrule	<b>2.5mm Zirconium ceramic</b>	<b>1.25mm Zirconium ceramic</b>
Ferrule End Face	<b>PC Polish</b>	
Connector Insertion Loss	<b>Max. 0.3dB</b>	

## Fibre specifications

Features	Values
Core diameter	<b>50 ± 2.5µm</b>
Core Non-circularity	<b>≤5%</b>
Core-Cladding Concentricity Error	<b>≤1.0µm</b>
Cladding diameter	<b>125 ± 1.0µm</b>
Cladding Non-circularity	<b>≤1.0%</b>
Primary Coating diameter	<b>245 ± 7µm</b>
Coating-Cladding Concentricity Error	<b>≤10.0µm</b>
Coating Non-circularity	<b>≤6.0%</b>
Secondary coating diameter	<b>900 µm nominal</b>
Max. attenuation at 850nm	<b>2.4dB/km</b>
Max attenuation at 1300nm	<b>0.6dB/km</b>
Refractive Index at 850nm	<b>1.482</b>
Refractive Index at 1300nm	<b>1.477</b>
>=Bandwidth at 850nm	<b>≥3500 MHz.km</b>

# Excel Enbeam OM4 Fibre Optic Patch Lead LC-LC Multimode 50/125 DX LS0H Aqua 10 m

Part Code: 204-323

sales@excel-networking.com  
excel-networking.com

Bandwidth at 1300nm	≥500 MHz.km
Effective Modal Bandwidth at 850nm	≥4700 MHz/km
Numerical Aperture	0.200 ±0.015
Zero Dispersion Wavelength	1295-1340nm
Macrobending Loss - 100 turns, 37.5mm Radius, 850nm	≤0.50dB
Macrobending Loss - 100 turns, 37.5mm Radius, 1300nm	≤0.50dB
Macrobending Loss - 2 turns, 15mm Radius, 850nm	≤1.0dB
Macrobending Loss - 2 turns, 15mm Radius, 1300nm	≤1.0dB
Coating Strip Force (typical)	1.5N
Coating Strip Force (peak)	1.3 - 8.9N

## Cross-section diagram

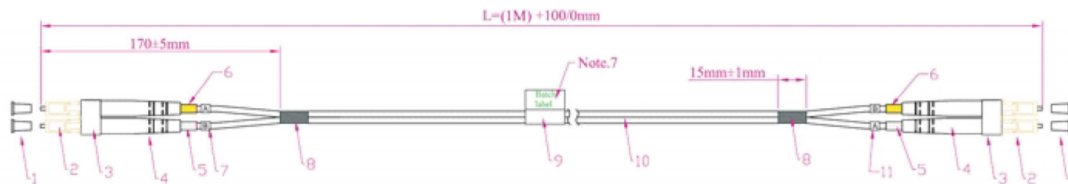


# Excel Enbeam OM4 Fibre Optic Patch Lead LC-LC Multimode 50/125 DX LS0H Aqua 10 m

Part Code: 204-323

sales@excel-networking.com  
excel-networking.com

## Product drawing



## Standards

Applicable standard	Detail
BS EN 60332-1-2:2004+A11:2016	Tests on electric and optical fibre cables under fire conditions - Test for vertical flame propagation for a single insulated wire or cable. Procedure for 1 kW pre-mixed flame
IEC 60793-1-1:2022	Optical fibres - Part 1-1: Measurement methods and test procedures - General and guidance
IEC 60793-2:2015	Optical fibres - Part 2: Product specifications - General
IEC 60793-2-10:2017	Sectional specification for A1 multimode fibres
IEC 60793-1-20:2014	Optical fibres - Part 1-20: Measurement methods and test procedures - Fibre geometry
IEC 60793-1-21:2001	Optical fibres - Part 1-21: Measurement methods and test procedures - Coating geometry
IEC 60793-1-22:2001	Optical fibres - Part 1-22: Measurement methods and test procedures - Length measurement
IEC 60793-1-30:2010	Optical fibres - Part 1-30: Measurement methods and test procedures - Fibre proof test
IEC 60793-1-31:2010	Optical fibres - Part 1-31: Measurement methods and test procedures - Tensile Strength
ITU G.651.1	Characteristics of a 50/125 µm multimode graded index optical fibre cable for the optical access network

# Excel Enbeam OM4 Fibre Optic Patch Lead LC-LC Multimode 50/125 DX LSOH Aqua 10 m

Part Code: 204-323

sales@excel-networking.com  
excel-networking.com

EN 50173-1:2018	Information technology. Generic cabling systems - General requirements
EN 50173-2:2007 + A1:2010	Information technology. Generic cabling systems - Office premises
IEC 61754-1:2013	Fibre optic interconnecting devices and passive components - Fibre optic connector interfaces - Part 1: General and guidance
IEC 61754-2:1996	Fibre optic connector interfaces - Part 2: Type BFOC/2,5 connector family
IEC 61754-4:2013	Fibre optic interconnecting devices and passive components - Fibre optic connector interfaces - Part 4: Type SC connector family
IEC 61754-4-100:2015	Fibre optic interconnecting devices and passive components - Fibre optic connector interfaces - Part 4-100: Type SC connector family - Simplified receptacle SC-PC connector interfaces
IEC 61754-20:2012	Fibre optic connector interfaces - Part 20: Type LC connector family
Directive 2011/65/EU (RoHS II)	Restriction of the Use of Certain Hazardous Substances in Electrical and Electronic Equipment — compliant. Applies within EU member states).
Directive (EU) 2015/863 (RoHS III)	Amending Directive 2011/65/EU to add four phthalates (DEHP, BBP, DBP, DIBP) to Annex II — compliant.
Directive 2008/98/EC (WFD)	Waste Framework Directive — compliant. Implemented in the UK through the Waste (England and Wales) Regulations 2011 (SI 2011 No. 988).
ECHA SCIP Database	Compliant; product does not contain SVHCs (Substances of Very High Concern) as defined under REACH Article 33(1). Submission obligations met under EU REACH and UK REACH.
Regulation (EU) 2019/1021 (POPs)	EU Regulation on Persistent Organic Pollutants — compliant. For Great Britain, compliance is aligned with the Persistent Organic Pollutants (Amendment) (EU Exit) Regulations 2020 (SI 2020 No. 1355).
UK SI 2012 No. 3032	The Restriction of the Use of Certain Hazardous Substances in Electrical and Electronic Equipment

# Excel Enbeam OM4 Fibre Optic Patch Lead LC-LC Multimode 50/125 DX LS0H Aqua 10 m

Part Code: 204-323

sales@excel-networking.com  
excel-networking.com

Regulations 2012 (UK RoHS) — compliant for Great Britain. Retained EU law, as amended by the Product Safety and Metrology (Amendment etc.) (EU Exit) Regulations 2019.

## Part Code Table

Part Code	Description
204-300	Excel Enbeam OM4 Fibre Optic Patch Lead LC-LC Multimode 50/125 DX LS0H Aqua 1 m
204-301	Excel Enbeam OM4 Fibre Optic Patch Lead LC-LC Multimode 50/125 DX LS0H Aqua 2 m
204-302	Excel Enbeam OM4 Fibre Optic Patch Lead LC-LC Multimode 50/125 DX LS0H Aqua 3 m
204-303	Excel Enbeam OM4 Fibre Optic Patch Lead LC-LC Multimode 50/125 DX LS0H Aqua 5 m
204-304	Excel Enbeam OM4 Fibre Optic Patch Lead LC-SC Multimode 50/125 DX LS0H Aqua 1 m
204-305	Excel Enbeam OM4 Fibre Optic Patch Lead LC-SC Multimode 50/125 DX LS0H Aqua 2 m
204-306	Excel Enbeam OM4 Fibre Optic Patch Lead LC-SC Multimode 50/125 DX LS0H Aqua 3 m
204-307	Excel Enbeam OM4 Fibre Optic Patch Lead LC-SC Multimode 50/125 DX LS0H Aqua 5 m
204-308	Excel Enbeam OM4 Fibre Optic Patch Lead SC-SC Multimode 50/125 DX LS0H Aqua 1 m
204-309	Excel Enbeam OM4 Fibre Optic Patch Lead SC-SC Multimode 50/125 DX LS0H Aqua 2 m
204-310	Excel Enbeam OM4 Fibre Optic Patch Lead SC-SC Multimode 50/125 DX LS0H Aqua 3 m
204-323	Excel Enbeam OM4 Fibre Optic Patch Lead LC-LC Multimode 50/125 DX LS0H Aqua 10 m

# Excel Enbeam OM4 Fibre Optic Patch Lead LC-LC Multimode 50/125 DX LSOH Aqua 10 m

Part Code: 204-323

sales@excel-networking.com  
excel-networking.com

204-330	Excel Enbeam OM4 Fibre Optic Patch Lead LC-LC Multimode 50/125 DX LSOH Violet 1 m
204-331	Excel Enbeam OM4 Fibre Optic Patch Lead LC-LC Multimode 50/125 DX LSOH Violet 2 m
204-332	Excel Enbeam OM4 Fibre Optic Patch Lead LC-LC Multimode 50/125 DX LSOH Violet 3 m
204-333	Excel Enbeam OM4 Fibre Optic Patch Lead LC-LC Multimode 50/125 DX LSOH Violet 5 m
204-334	Excel Enbeam OM4 Fibre Optic Patch Lead LC-SC Multimode 50/125 DX LSOH Violet 1 m
204-335	Excel Enbeam OM4 Fibre Optic Patch Lead LC-SC Multimode 50/125 DX LSOH Violet 2 m
204-336	Excel Enbeam OM4 Fibre Optic Patch Lead LC-SC Multimode 50/125 DX LSOH Violet 3 m
204-337	Excel Enbeam OM4 Fibre Optic Patch Lead LC-SC Multimode 50/125 DX LSOH Violet 5 m
204-338	Excel Enbeam OM4 Fibre Optic Patch Lead SC-SC Multimode 50/125 DX LSOH Violet 1 m
204-339	Excel Enbeam OM4 Fibre Optic Patch Lead SC-SC Multimode 50/125 DX LSOH Violet 2 m
204-340	Excel Enbeam OM4 Fibre Optic Patch Lead SC-SC Multimode 50/125 DX LSOH Violet 3 m
204-341	Excel Enbeam OM4 Fibre Optic Patch Lead SC-SC Multimode 50/125 DX LSOH Violet 5 m
204-352	Excel Enbeam OM4 Fibre Optic Patch Lead LC-LC Multimode 50/125 DX LSOH Violet 10 m