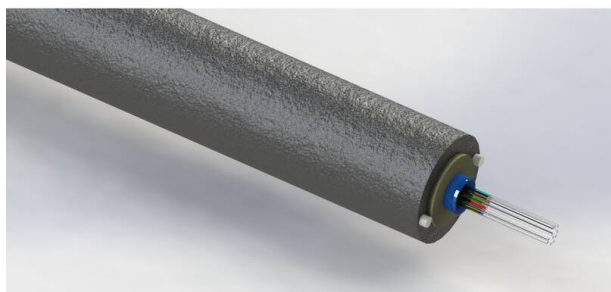


# Excel Enbeam OS2 Singlemode G.657.A2 External Drop Cable 4 Core 9/125 5mm

Item Code: 207-504



Suitable for external use

G.657.A2

LSZH

UV-resistant

Euroclass Fca

PIA approved

## Product Overview

Enbeam 4 fibre drop cable has been designed for external installations aimed at the FTTH and multi dwelling market. The cable consists of 4 cores of 250  $\mu$ m single mode G.657.A2 fibres in a jell filled loose tube covered with water blocking aramid yarn with a LSZH UV-resistant outer sheath with 2x FRP rods.

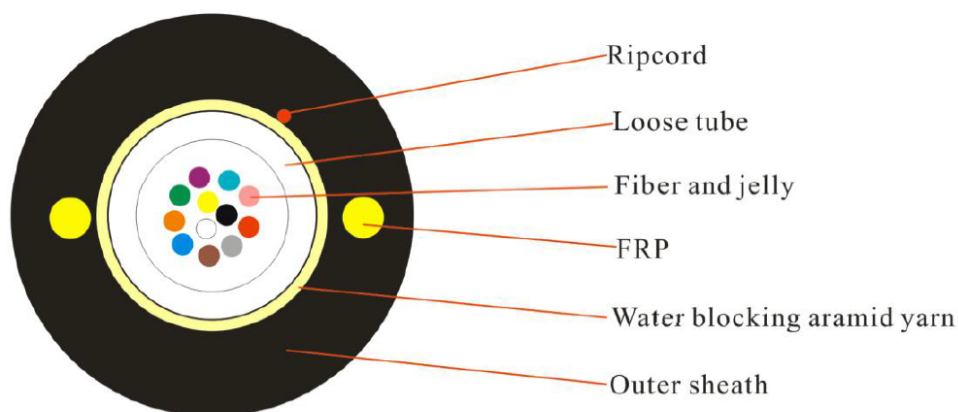
## Product Specifications

Feature	Values
Number of Cores	4
Fibre type	Single mode 9/125
Category	OS2
Rodent resistant	no
Outer sheath colour	Black
Low smoke (acc. IEC 61034-2)	yes
Reaction-to-fire class according to EN 13501-6	Fca
Outer diameter approx.	5 mm

### Additional specifications

Features	Values
Attenuation	1310 nm (dB/Km) $\leq 0.33$
	1550 nm (dB/Km) $\leq 0.22$
Outer jacket material	LSZH
Outer jacket colour	Black
Outer jacket thickness (mm)	1 $\pm$ 0.1 mm
Strength member	2 x FRP rods
Micro bundle jacket material	LSZH
Short term tensile strenght	>600N
Minimum breaking tension	<2000N
Span distance	>70m
Short crush resistance (N/100mm)	1000N
Minimum bend radius	20x OD
Crush	1000N
Overall cable diameter	5 mm
Operating temprature	-20 to +70 °C
Cable is suitable for use under 11 Kv power with a minimum separation distance of 1.8 m	Yes

### Product drawings



### Standards

Applicable standard	Detail
IEC 60332-1-2:2004	Tests on electric and optical fibre cables under fire conditions. Test for vertical flame propagation for a single insulated wire or cable. Procedure for 1 kW pre-mixed flame
IEC 60754-2:2011	Test on gases evolved during combustion of materials from cables - Part 2: Determination of acidity (by pH measurement) and conductivity
IEC 61034-2:2005+A1:2013	Measurement of smoke density of cables burning under defined conditions - Part 2: Test procedure and requirements
EC 60793-1-1:2022	Optical fibres - Part 1-1: Measurement methods and test procedures - General and guidance
IEC 60793-1-20:2014	Optical fibres - Part 1-20: Measurement methods and test procedures - Fibre geometry
IEC 60793-1-21:2001	Optical fibres - Part 1-21: Measurement methods and test procedures - Coating geometry
EC 60793-1-22:2001	Optical fibres - Part 1-22: Measurement methods and test procedures - Length measurement
EC 60793-1-30:2010	Optical fibres - Part 1-30: Measurement methods and test procedures - Fibre proof test
TU G.652.D	Characteristics of a single-mode optical fibre and cable
EN 50173-1:2018	Information technology. Generic cabling systems -

# Excel Enbeam OS2 Singlemode G.657.A2 External Drop Cable 4 Core 9/125 5mm

Item Code: 207-504



General requirements	
EN 50575: 2014 + A1: 2016	Power, control and communication cables — Cables for general applications in construction works subject to reaction to fire requirements
EN 50399:2011+A1:2016	Common test methods for cables under fire conditions. Heat release and smoke production measurement on cables during flame spread test. Test apparatus, procedures, results
SO/IEC 11801-1:2017	Information technology - Generic cabling for customer premises: Part 1 General Requirements
ANSI/TIA 568-3.D	Optical Fiber Cabling and Components Standard
ANSI/TIA/EIA 598-D	Optical Fibre Cable Colour Coding
Directive 2011/65/EU (RoHS II)	Restriction of the Use of Certain Hazardous Substances in Electrical and Electronic Equipment — compliant. Applies within EU member states).
Directive (EU) 2015/863 (RoHS III)	Amending Directive 2011/65/EU to add four phthalates (DEHP, BBP, DBP, DIBP) to Annex II — compliant.
Directive 2008/98/EC (WFD)	Waste Framework Directive — compliant. Implemented in the UK through the Waste (England and Wales) Regulations 2011 (SI 2011 No. 988).
ECHA SCIP Database	Compliant; product does not contain SVHCs (Substances of Very High Concern) as defined under REACH Article 33(1). Submission obligations met under EU REACH and UK REACH.
Regulation (EU) 2019/1021 (POPs)	EU Regulation on Persistent Organic Pollutants — compliant. For Great Britain, compliance is aligned with the Persistent Organic Pollutants (Amendment) (EU Exit) Regulations 2020 (SI 2020 No. 1355).
UK SI 2012 No. 3032	The Restriction of the Use of Certain Hazardous Substances in Electrical and Electronic Equipment Regulations 2012 (UK RoHS) — compliant for Great Britain. Retained EU law, as amended by the Product Safety and Metrology (Amendment etc.) (EU Exit) Regulations 2019.

## Part Number Table

Part Number	Description
207-504	Excel Enbeam OS2 Singlemode G.657.A2 External Drop Cable 4 Core 9/125 5mm
207-508	Excel Enbeam OS2 Singlemode G.657.A2 External Drop Cable 8 Core 9/125 5mm

Excel Enbeam OS2 Singlemode G.657.A2 External  
Drop Cable 4 Core 9/125 5mm

Item Code: 207-504



207-512

Excel Enbeam OS2 Singlemode G.657.A2 External Drop Cable 12 Core 9/125  
5mm

Excel is a world class premium performing end to end infrastructure solution designed,  
Manufactured, supported and delivered without compromise.

Contact us at [sales@excel-networking.com](mailto:sales@excel-networking.com)



E&OE. Excel is a registered trade name of Mayflex Holdings Ltd.