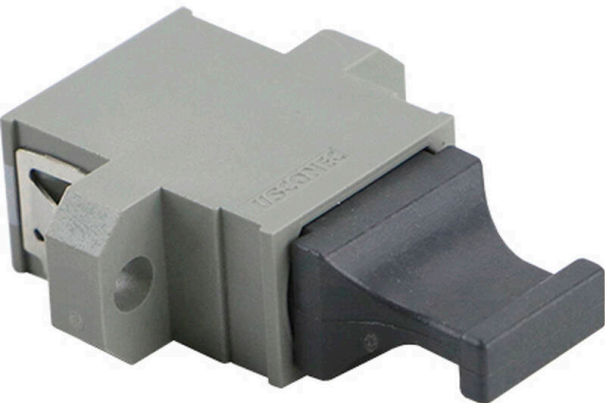


# Excel Enbeam US Conec MTP Aligned Adaptor 5306



Item Code: 208-021



- Aligned keyway
- One dust cap
- Full flange

## Product Overview

US Conec MTP 5306 aligned adaptor.

## Product Specifications

Feature	Values
Suitable for type of fibre	Multi mode
Type of connector connection 1	MT/MPO
Type of connector connection 2	MT/MPO
Material housing	Plastic
Type of fastening	Screw
Colour	Grey

## Additional specifications

Features	Values
Insertion Loss	< 0.2 dB
Durability (500 Mating)	0.2 dB Max Increase
Operating Temperature	-40°C to +80°C
Retention Force	200 – 600 grams

# Excel Enbeam US Conec MTP Aligned Adaptor 5306



Item Code: 208-021

## Standards

Applicable standard	Detail
IEC 61300-2-22	Fibre optic interconnecting devices and passive components - Basic test and measurement procedures Change of temperature
IEC 61300-3-4:2012	Fibre optic interconnecting devices and passive components - Basic test and measurement procedures Attenuation
IEC 61300-2-2	Fibre optic interconnecting devices and passive components - Basic test and measurement procedures Mating durability

## Part Number Table

Part Number	Description
208-021	Excel Enbeam US Conec MTP Aligned Adaptor 5306

Excel is a world class premium performing end to end infrastructure solution designed, Manufactured, supported and delivered without compromise.

Contact us at [sales@excel-networking.com](mailto:sales@excel-networking.com)



E&OE. Excel is a registered trade name of Mayflex Holdings Ltd.