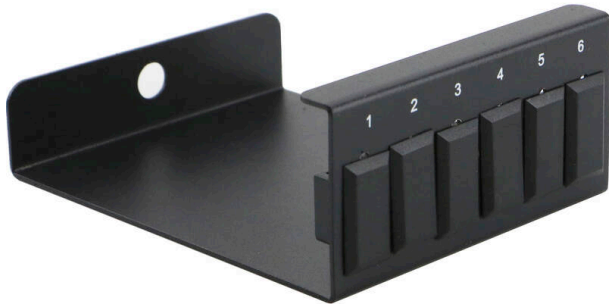


Excel Enbeam 6 Way MTP Adaptor Plate Unloaded

Item Code: 208-024



✕ Available in 6-way/8-way

✕ Available in loaded/unloaded

✕ 25 Year system warranty

✕ CIBSE TM65 Embodied Carbon: 0.626 kg CO2e

Product Overview

Excel MTP adapter plate.

Product Specifications

Feature	Values
With couplers	no
Suitable for number of couplers	6
Suitable for type of fibre	Multi mode/single mode
IP-rating	IP20

Standards

Applicable standard	Detail
RoHS-II/-III (2011/65/EU & 2015/863): 2023	Our products, demonstrate full adherence to the regulatory stipulations of the EU Directive 2011/65/EU (RoHS-II) and its corresponding delegated directive 2015/863 (RoHS-III).
WFD: 2023	Compliant to Waste Framework Directive
SCIP: 2023	Compliant - Does Not Contain Substances of Concern In articles as such or in complex objects (Products)
POPs (EU) No 2019/1021	EU Regulation for the restriction of Persistent Organic Pollutants.

Item Code: 208-024

Part Number Table

Part Number	Description
208-024	Excel Enbeam 6 Way MTP Adaptor Plate Unloaded
208-025	Excel Enbeam 6 Way MTP Adaptor Plate Loaded
208-027	Excel Enbeam 8 Way MTP Adaptor Plate Unloaded

Excel is a world class premium performing end to end infrastructure solution designed, Manufactured, supported and delivered without compromise.

Contact us at sales@excel-networking.com