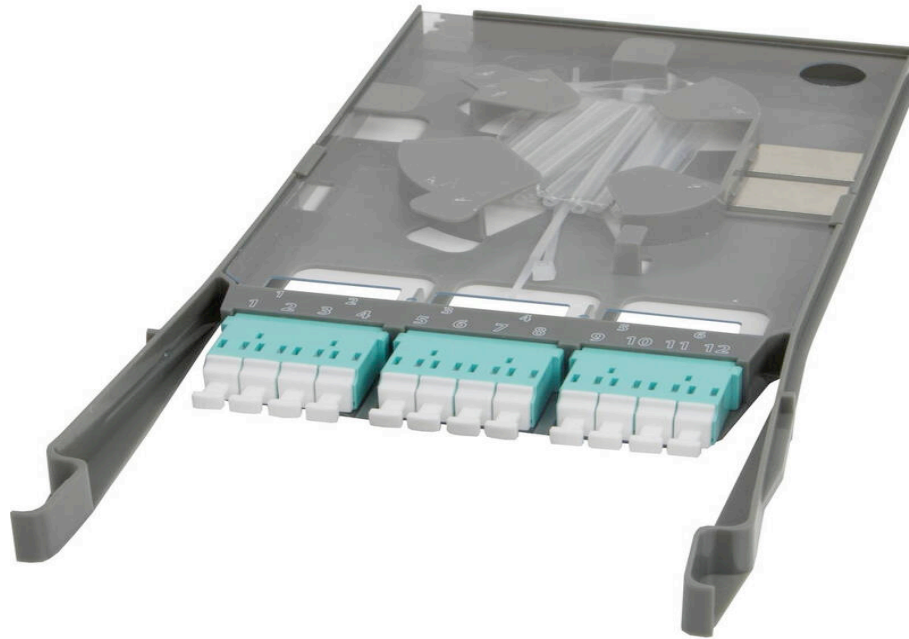


Excel Enbeam HD 6P-12F-LC-OM3 Cassette Loaded with Quad LC Adaptors

Part Code: 208-106

sales@excel-networking.com
excel-networking.com



Main Features

- / High Density 12 fibre LC cassette
- / Can be spliced or direct terminated
- / OS2, OM3 and OM4 options
- / Complete with splice protectors
- / Pre-termination options
- / 25 Year System Warranty Available

Product Overview

The Excel LC High-Density cassette is designed for the Excel HD 1U panel, which has a capacity for 12 cassettes, offering up to 144 fibres per 1U. A range of cassettes are offered and can be mixed and matched as required to offer a highly dense and flexible system for both LC and MTP connectivity.

The LC cassettes can be spliced (12 magnetic splice protectors are included), direct terminated or pre-terminated offering a truly plug-n-play solution. The cassettes can be supplied with or without pigtails. See the part number table below for all options. The pigtails (if supplied) are 12-colours and loaded to TIA 598 colour standard.

The cassettes can be inserted into the panel from the front or the rear and feature 2 physical stops, one installed and one for patching.

The panel also offers full and innovative patchcord management to the front and cable management to the rear.

Excel Enbeam HD 6P-12F-LC-OM3 Cassette Loaded with Quad LC Adaptors

Part Code: 208-106

sales@excel-networking.com
excel-networking.com

Product Specifications

Feature	Values
Suitable for number of fibre cores	12
With coupling/adaptor	yes
Type of connector external	LC
Type of connector interior	LC
Fibre type	Multi mode
APC-type	no
Colour	Grey

Additional specifications

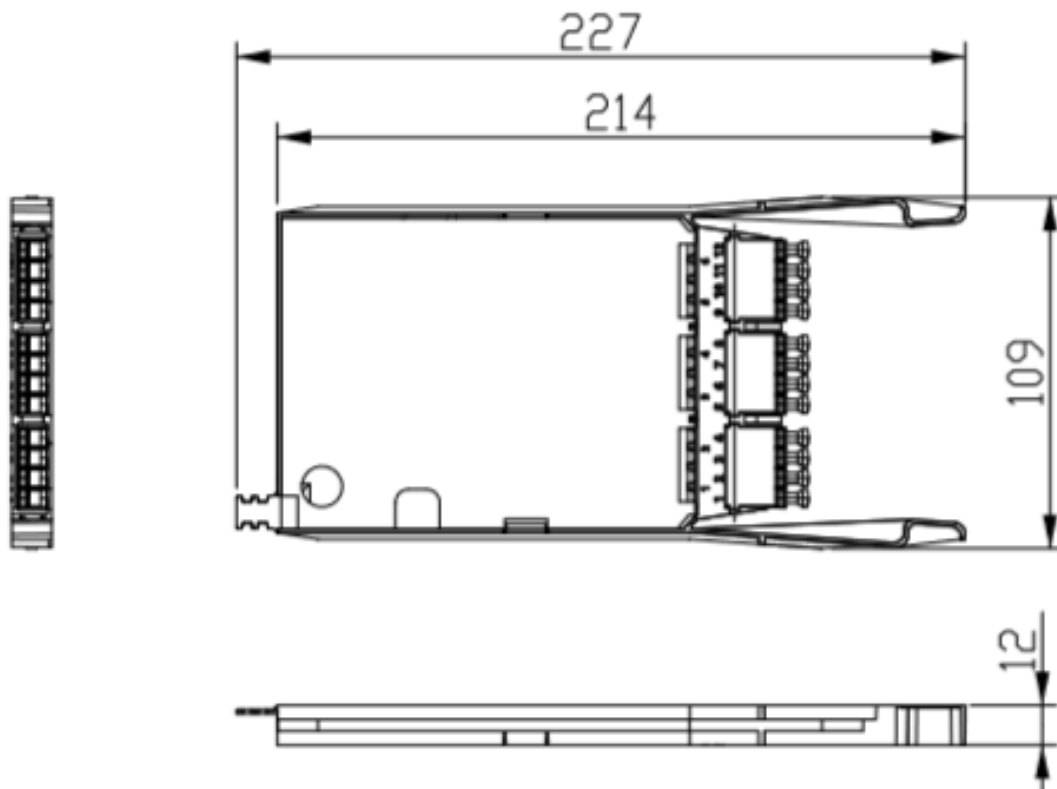
Features	Values
Operating Temperature	-40 to +80 °C
Capacity	12 LC-Fibres per cassette
Width	108mm
Height	12.5mm
Depth	232mm
Material Coating	ABS UL94-V0
Colour	Grey

Excel Enbeam HD 6P-12F-LC-OM3 Cassette Loaded with Quad LC Adaptors

Part Code: 208-106

sales@excel-networking.com
excel-networking.com

Product drawing



Standards

Applicable standard	Detail
Directive 2011/65/EU (RoHS II)	Restriction of the Use of Certain Hazardous Substances in Electrical and Electronic Equipment — compliant. Applies within EU member states).
Directive (EU) 2015/863 (RoHS III)	Amending Directive 2011/65/EU to add four phthalates (DEHP, BBP, DBP, DIBP) to Annex II — compliant.
IEC 61754-1:2013	Fibre optic interconnecting devices and passive components - Fibre optic connector interfaces - Part 1: General and guidance
Directive 2008/98/EC (WFD)	Waste Framework Directive — compliant. Implemented in

Excel Enbeam HD 6P-12F-LC-OM3 Cassette Loaded with Quad LC Adaptors

Part Code: 208-106

sales@excel-networking.com
excel-networking.com

the UK through the Waste (England and Wales) Regulations 2011 (SI 2011 No. 988).

ECHA SCIP Database	Compliant; product does not contain SVHCs (Substances of Very High Concern) as defined under REACH Article 33(1). Submission obligations met under EU REACH and UK REACH.
Regulation (EU) 2019/1021 (POPs)	EU Regulation on Persistent Organic Pollutants — compliant. For Great Britain, compliance is aligned with the Persistent Organic Pollutants (Amendment) (EU Exit) Regulations 2020 (SI 2020 No. 1355).
UK SI 2012 No. 3032	The Restriction of the Use of Certain Hazardous Substances in Electrical and Electronic Equipment Regulations 2012 (UK RoHS) — compliant for Great Britain. Retained EU law, as amended by the Product Safety and Metrology (Amendment etc.) (EU Exit) Regulations 2019.

Part Code Table

Part Code	Description
208-105	Excel Enbeam HD 6P-12F-LC-OS2 Cassette Loaded with Quad LC Adaptors
208-106	Excel Enbeam HD 6P-12F-LC-OM3 Cassette Loaded with Quad LC Adaptors
208-107	Excel Enbeam HD 6P-12F-LC-OM4 Cassette Loaded with Quad LC Adaptors
208-108	Excel Enbeam HD 6P-12F-LC-OS2 Cassette Loaded with Quad Adaptors & Pigtails
208-109	Excel Enbeam HD 6P-12F-LC-OM3 Cassette Loaded with Quad Adaptors & Pigtails
208-110	Excel Enbeam HD 6P-12F-LC-OM4 Cassette Loaded with Quad Adaptors & Pigtails